

PORODO
LIFESTYLE



Porodo Lifestyle

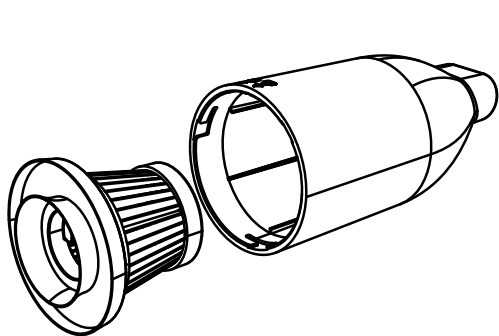
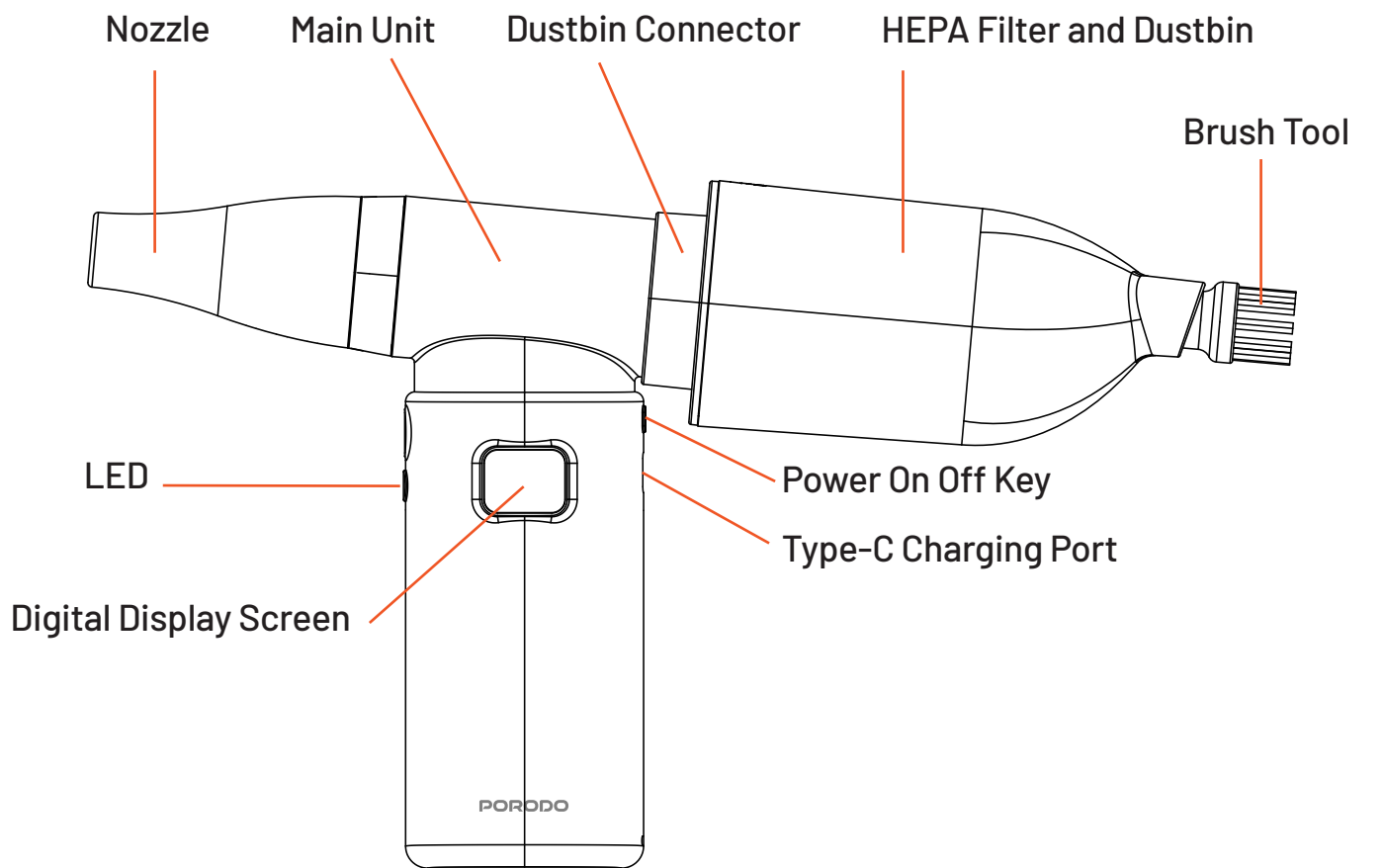
**2-In-1 Handheld Vacuum
and Air Duster**

SKU: PDLFST202BK

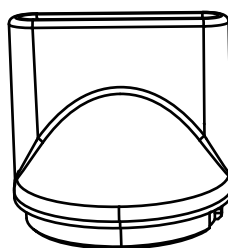
Table of Contents

| | |
|-------------------------------|---|
| Product Overview | 2 |
| Operating Instructions | 3 |
| Air Nozzle Installation | 4 |
| Dust Absorption Instructions | 5 |
| Dustbin Cleaning Instructions | 5 |
| Battery Removable | 6 |
| Specifications | 7 |
| Safety Rules | 7 |
| Disposal | 8 |
| Warranty | 8 |
| Contact Us | 8 |

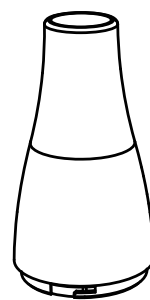
Product Overview



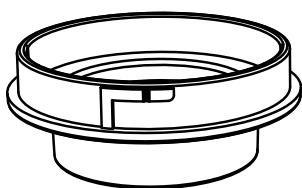
HEPA Filter & Dust Box



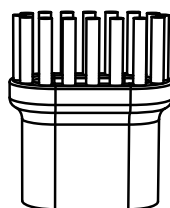
Flat-Mouth Nozzle



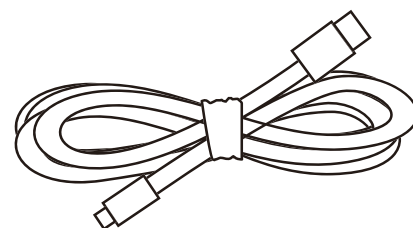
Narrow Nozzle



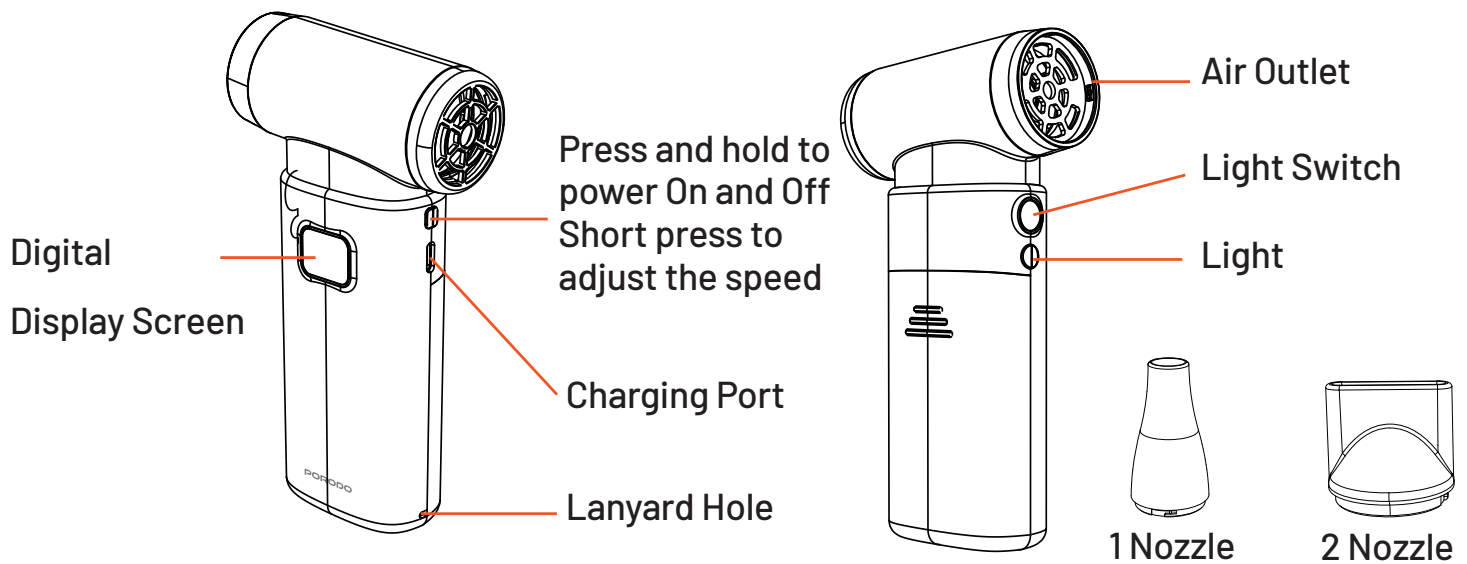
Dustbin Connector



Dust Suction Brush



USB Type-C Cable



Operating Instructions

1. Power On

Press and hold the power button for 1 second to turn on the device. The fan will start at the first speed setting.

2. Increasing Fan Speed

2.1 Quickly press the button again to switch to the second speed.

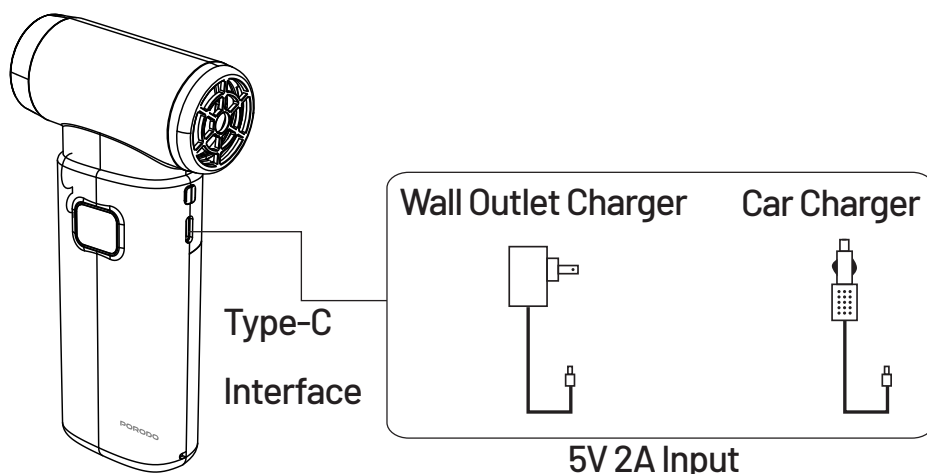
2.2 Continue pressing the button to gradually increase the speed through each gear.

2.3 The fifth gear represents the highest setting, offering maximum airflow.

3. Charging Warning

3.1 Do not charge the device while it is in use.

3.2 Once the device is powered on, connecting the charging cable will automatically shut it down. The device will enter charging mode to protect both the battery and the motor.



| | |
|------------|--|
| Power On | Press and hold the power button to turn the device on. |
| High Speed | Press the power button to cycle through the lifting modes. |
| Low Speed | Press the power button again to adjust the settings. |
| Shut Down | Press and hold the power button to turn the device off. |

4. To check the battery power in the shutdown state: Press and hold the switch key. The display will show a number with "%" to indicate the battery power level.

5. To check the wind speed in the power-on state: Press and hold the switch key. The display will show a number with "L", which represents the current wind speed.

6. Battery Charging Indicator: The "%" symbol on the display indicates that the battery is charging.

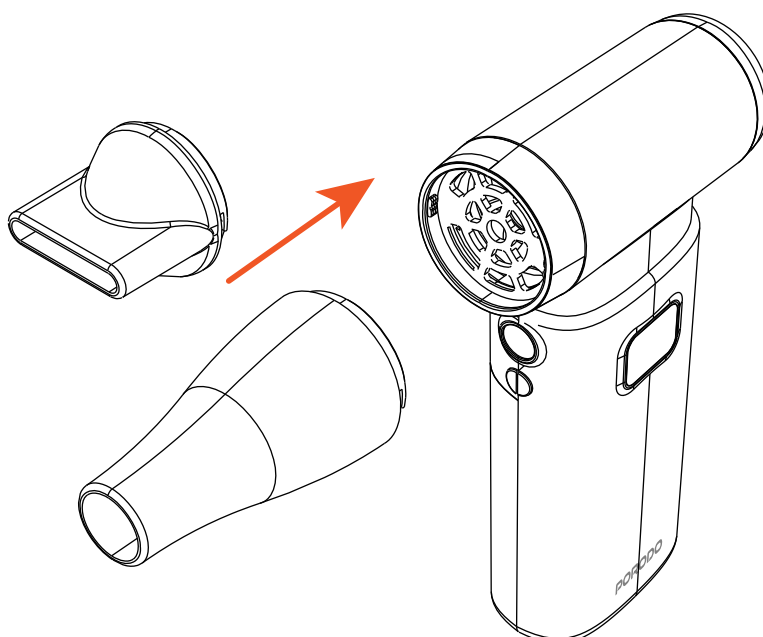
7. Charging Instructions: Ensure the device is in the shutdown state before charging. Do not initiate charging while the device is powered on.

Air Nozzle Installation

1. Align the air nozzle with the main engine air outlet.

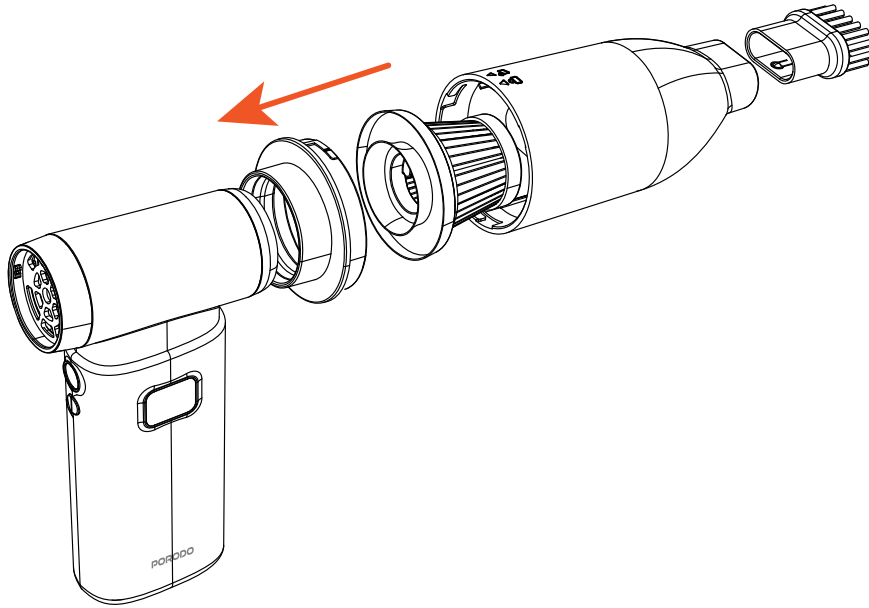
2. Rotate clockwise to tighten the nozzle securely in place.

3. Rotate counterclockwise to loosen and remove the nozzle.



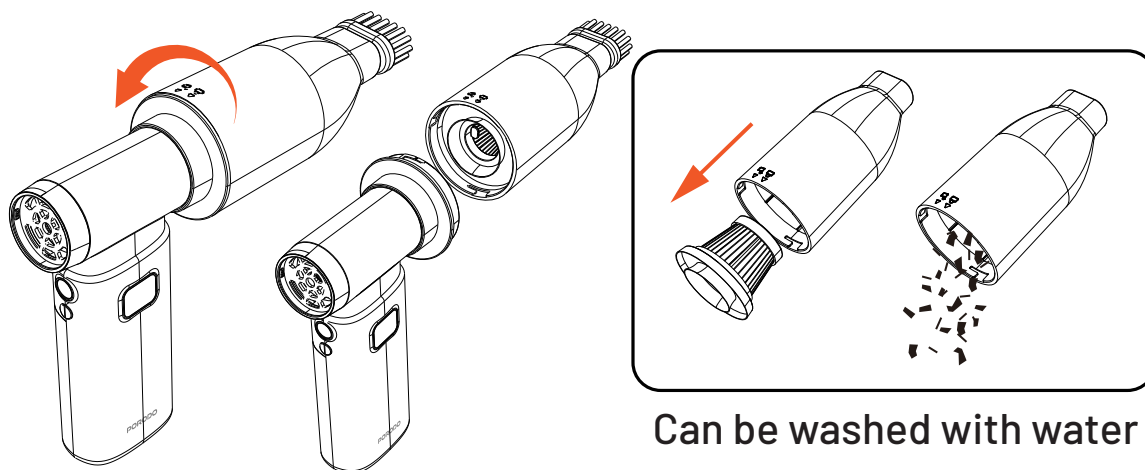
Dust Absorption Instructions

1. Press the dust lock indication triangle and align it with the body triangle.
2. Rotate clockwise to fit the dust box and install the flat brush dust.
3. No need to install the blow pipe or other accessories, as they may affect the vacuum performance.



Dustbin Cleaning Instructions

1. Remove the dustbin from the main unit, then detach the dustbin connection by turning it in the indicated direction.
2. Turn the dustbin counterclockwise to remove it, then take out the filter. Dispose of any garbage and dust from the dustbin.
3. Clean the dustbin and filter with running water, then allow them to air-dry naturally.
4. Once dry, place the filter back into the dustbin and reinstall it onto the main unit.

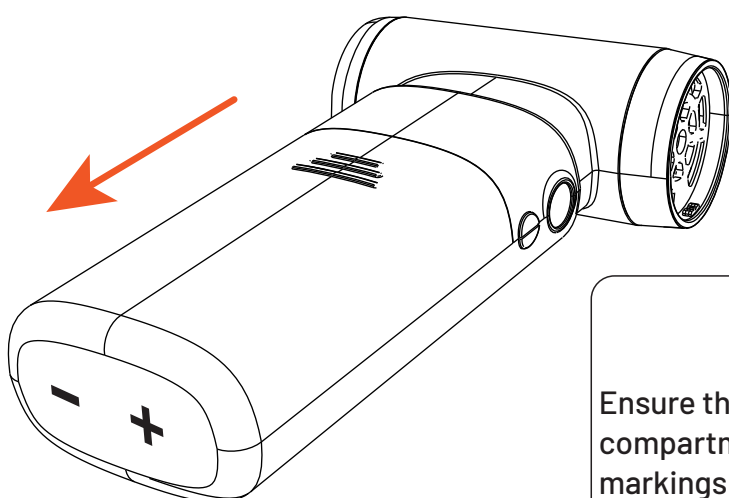


Battery Removable





1. When the battery needs to be replaced, press and hold the rear cover, then pull it down to remove the battery cover. Take out the battery from the compartment and replace it.

2. When installing the new battery, follow the instructions on the prompt sticker located on the rear cover. Insert the battery according to the positive ('+') and negative ('-') terminals. Once the battery is correctly placed, close the rear cover.

Note: Insert the battery into the compartment following the '+' and '-' terminal indications.



Warning

Ensure the battery is placed correctly in the compartment by following the () and () markings on the battery. The () side indicates the positive terminal, and the () side indicates the negative terminal.

Specifications

| | |
|--------------------|--|
| Input | 5V/2A |
| Battery Capacity | 2×4000mAh |
| Charging Time | 3H |
| Motor Speed | 130000RPM |
| Wind Pressure | 230G |
| Dust Box Capacity | 160mL |
| LED Lighting Power | 1W |
| Suction Power | 7000Pa |
| Charging Interface | Type-C |
| Working Time | 2 Hours (Low Wind), 10 Minutes (High Wind) |
| Net Weight | 290g |
| Product Size | 38 x 78 x 152mm |
| Model Number | LFS202 |

Safety Rules

To ensure safety, please read and follow the guidelines below:

- 1.** Do not allow children or individuals who do not understand this manual to operate the product.
- 2.** Avoid inserting fingers or objects into the fan grille, fan cover, or moving blades.
- 3.** Keep hair, fabrics, and other materials away from the fan to prevent entanglement and potential hazards.
- 4.** When disposing of the product, disassemble the casing and remove the battery. Dispose of them in accordance with your city's environmental protection regulations.

Disposal

This product must not be disposed of as unsorted household waste. It is important to separate such waste for proper treatment and recycling, in compliance with local waste management regulations.

Warranty

Products that you buy directly from our **Porodo** website or shop come with a 24-month warranty.

When you buy **Porodo** products from any of our approved sellers, you only get a 12-month warranty. If you want to extend this warranty, go to our website at **porodo.net/warranty** and fill out the form with your information. Don't forget to upload a picture of the product too. After we've checked and accepted your request, we'll send you an email to confirm that your product's warranty has been extended.

For more info, please check:
porodo.net/warranty

Contact Us

If you have any questions about this Privacy Policy, please contact us at:
info@porodo.net

Website: **porodo.net**

Service Support: **support@porodo.net**

Instagram: **[porodo](https://www.instagram.com/porodo)**