

**LéPRESSO**



**LePresso**

**BrewJet Portable  
Espresso Maker**

SKU: LPPECFFMGY

# Table of Contents

<b>Important Information</b>	<b>2</b>
<b>Schematic View</b>	<b>3</b>
<b>Function Description</b>	<b>4</b>
<b>Instructions for Hot Brew</b>	<b>5</b>
<b>Instructions for Cold Brew</b>	<b>7</b>
<b>Cleaning and Maintenance</b>	<b>8</b>
<b>Charging Instructions</b>	<b>9</b>
<b>Specifications</b>	<b>9</b>
<b>Disposal</b>	<b>10</b>
<b>Warranty</b>	<b>10</b>
<b>Contact Us</b>	<b>10</b>

# Important Information

To ensure your safety and prevent injury or damage, please read the manual and all accompanying diagrams thoroughly before use. Keep this manual in a safe place for future reference.

Please note the following important information for the first-time use:

- 1.** Before connecting the power supply, verify that the voltage and current specified on the product match those of your power supply.
- 2.** Do not exceed the "MAX" water level when filling the product to avoid the risk of burns from hot water spraying.
- 3.** The heating process generates high temperatures and steam. Always ensure that the water tank cover is securely closed during operation. Do not open the cover near the air outlet or shake the product, as this could result in burns.
- 4.** This product is not designed for use by individuals (including children) with physical, sensory, or mental impairments, or those lacking experience and knowledge of how to operate it. If such individuals wish to use the product, it should be done under the supervision and guidance of a responsible person.
- 5.** Children should not be allowed to use this product unsupervised. It should not be used in areas easily accessible to children to prevent burns.
- 6.** Always use clean, potable water for heating and extraction. Water containing impurities or particles may cause scale buildup inside the product and damage the water pump.
- 7.** Never operate the product with an empty water tank, as this may cause malfunction.
- 8.** If the product malfunctions or operates abnormally, stop use

immediately and contact the a service center. Do not attempt repairs yourself or use parts not recommended by the manufacturer, as this may cause further damage or safety hazards.

Please read the following cleaning instructions:

**9.** Always unplug the product before cleaning, and allow it to dry completely before reusing.

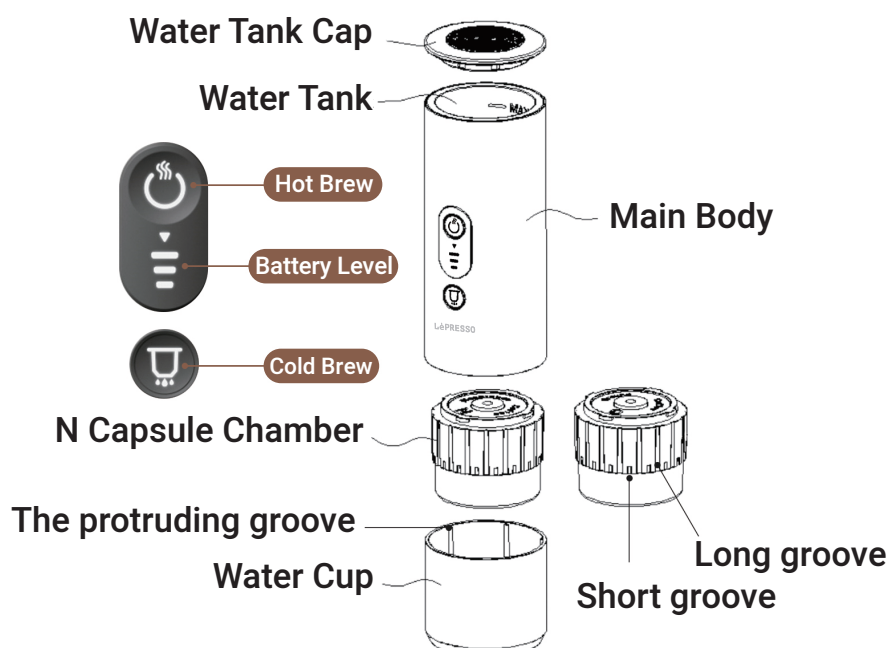
**10.** Be cautious when handling or cleaning the inside of the extraction chamber. Avoid touching the sharp blade, as it may cause injury to your fingers.

**11.** Clean the product only after it has cooled down to prevent the risk of burns.

**12.** Rinse the extraction chamber and water cup before and after each use, then wipe them dry. Any leftover coffee residues can lead to unpleasant odors and spoilage.

**Note:** The main body of the product can be cleaned with a damp cloth. Do not immerse or soak it in water, as water may enter the machine and cause damage.

## Schematic View



The protruding groove of the water cup connects with the short groove, creating space between the main body and the water cup to collect the extracted coffee.



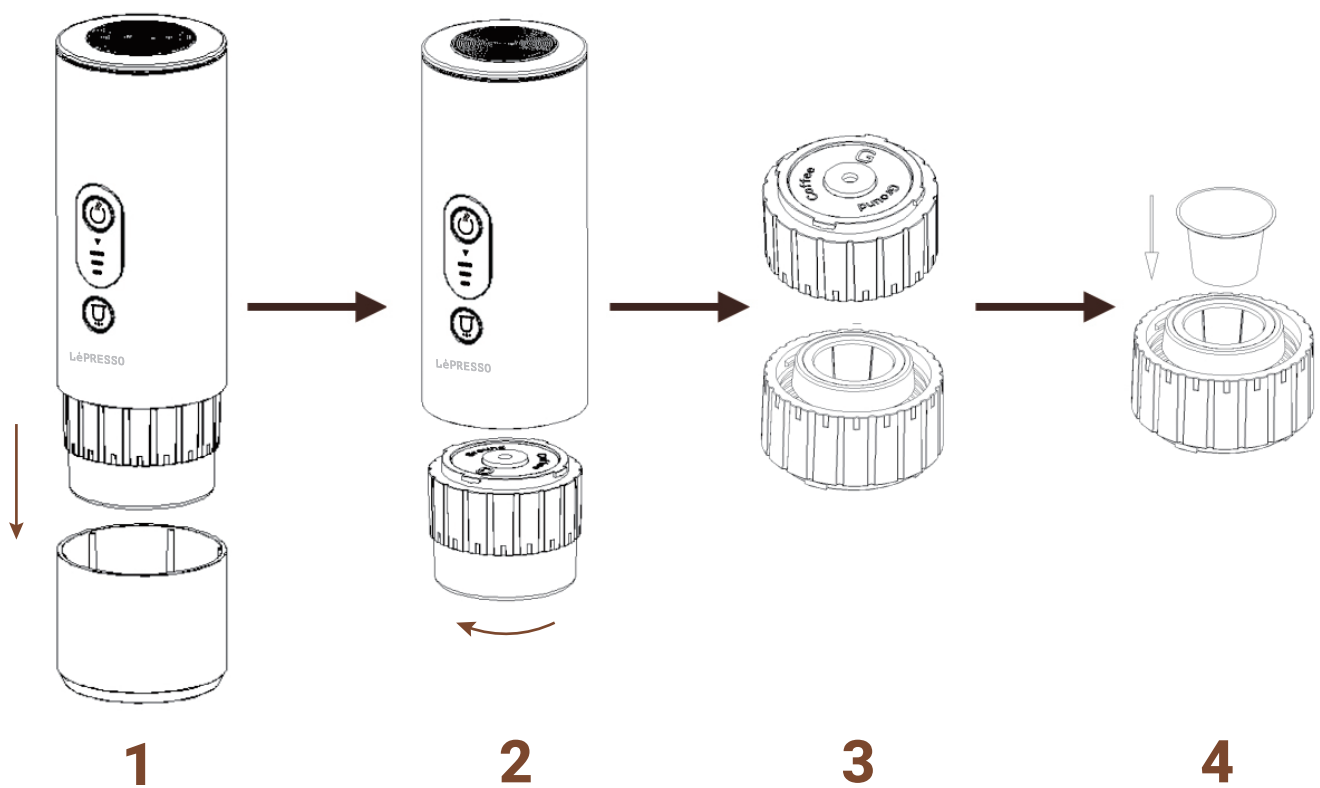
## Function Description

- 1. Hot Brew:** Press and hold the button for 3 seconds. The buzzer will sound once, and the button light will illuminate. The machine will begin heating. Once the water reaches the appropriate temperature, the buzzer will sound twice, and the machine will start the coffee extraction process. The water pump will stop once the extraction is complete.
- 2. Cold Brew:** Press and hold the button for 3 seconds. The buzzer will sound once, and the button light will illuminate. The machine will begin extracting coffee, and it will stop once the pump completes the extraction.
- 3.** Press any button during the above two brewing methods to stop the process.
- 4. Power Indicator:** The power indicator displays the battery level of the machine:
  - 4.1** When all three lights are on, the power is sufficient.
  - 4.2** When two lights are on, the battery is about 60% charged.

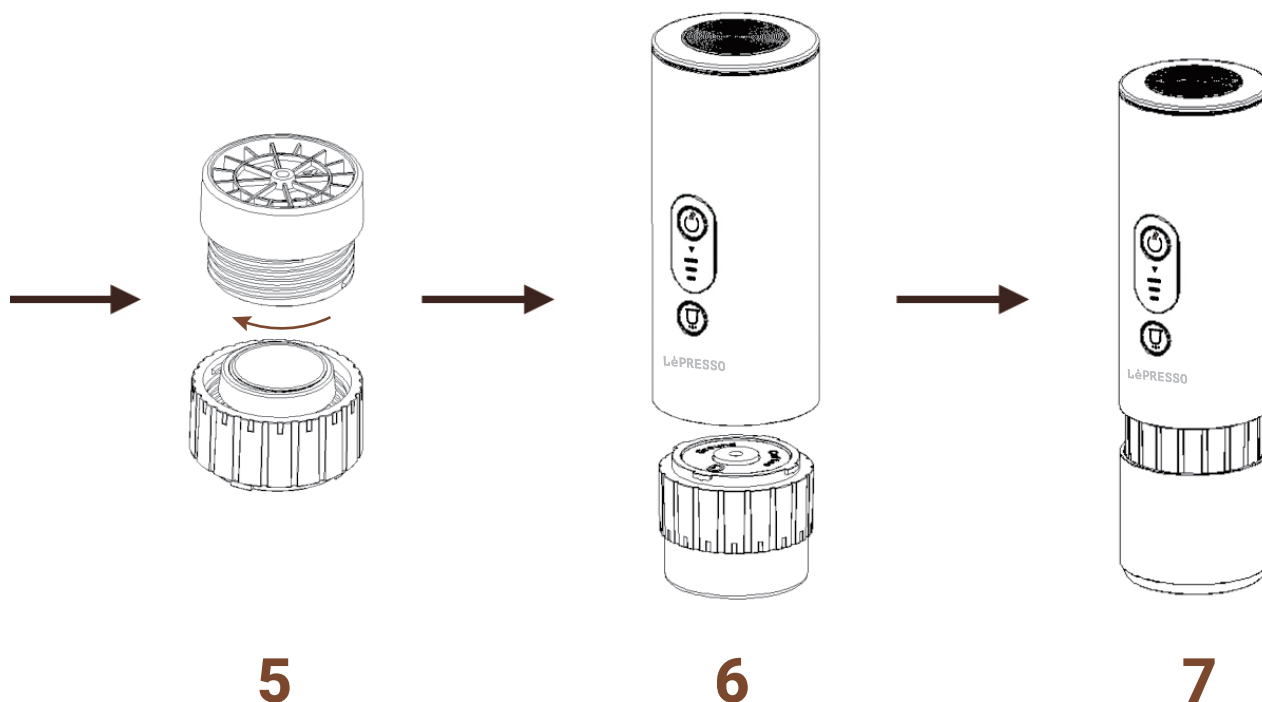
**4.3** When only one light is on, the battery is approximately 30% charged. If the indicator flashes and the buzzer sounds during coffee preparation, it indicates that the battery is too low, and the machine needs to be charged.

**5.** Briefly press any button to check the remaining battery level.

## Instructions for Hot Brew



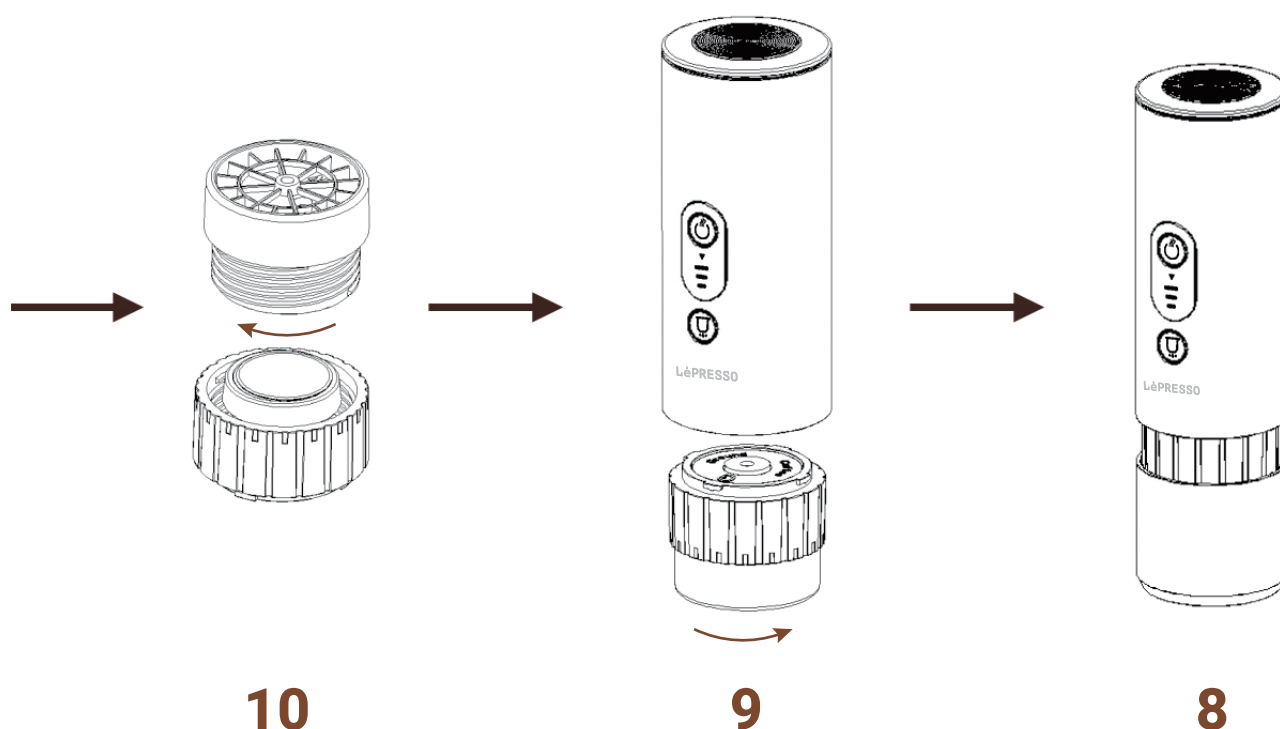
- 1.** Remove the water cup by pulling it downward.
- 2.** Rotate the N-capsule chamber cover clockwise to remove it.
- 3.** Rotate the N-capsule chamber cover clockwise to open it.
- 4.** Place the N capsule into the upper section of the N-capsule chamber.



**5.** Rotate and tighten the upper and lower covers of the N capsule chamber clockwise.

**6.** Turn counterclockwise to connect the N capsule chamber cover to the main body.

**7.** Adjust the short groove and mount the main machine on the water cup.

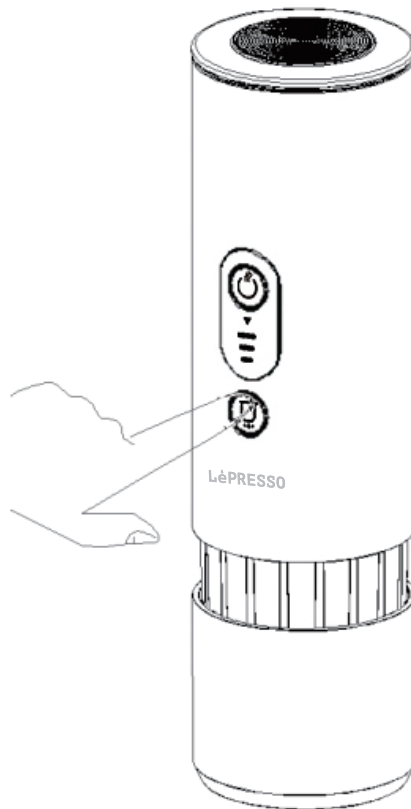


**10.** Press and hold the hot extraction key for 3 seconds to begin heating. Once heating is complete, the coffee will be extracted. After the process is finished, remove the main unit, and your coffee will be ready to drink from the water cup.

**9.** Add purified water into the water tank, ensuring it does not exceed the maximum water level.

**8.** Remove the water tank cover by lifting it upwards.

## Instructions for Cold Brew

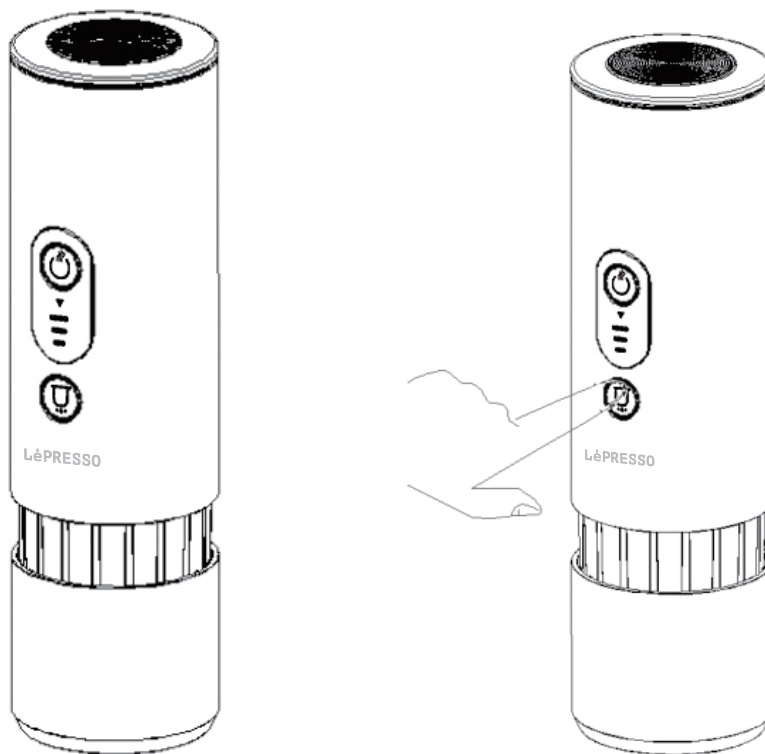


Press and hold the cold extraction key for 3 seconds to start the coffee extraction process. Once the process is complete, remove the main unit, and your coffee will be ready to enjoy from the cup.



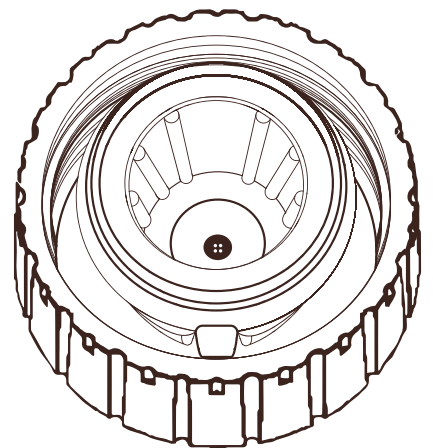
# Cleaning and Maintenance

After use, a small amount of coffee residue may remain in the extraction chamber. To clean, add fresh water and press and hold the cold extraction button for 3 seconds. The machine will pump clean water into the extraction chamber to flush out any remaining coffee residue.



The N capsule chamber can be wiped with a cloth after cleaning, as described above, or left to dry.

**Caution:** When wiping, be careful not to touch the internal stabbing knife with your fingers. The blade is sharp and may cause injury.



Place the water cup under the faucet and rinse it with clean water. It can also be placed in the dishwasher for cleaning.

Place the extraction chamber under the faucet and rinse it with clean water. It can also be placed in the dishwasher for cleaning.

## Charging Instructions

This machine comes with a Type-C charging cable. Plug the Type-C connector into the Type-C port on the machine. Connect the USB end of the cable to a charger plug to charge the machine via the Type-C power supply.

**Note:** This product requires a charger plug with a DC 5V output and a current greater than 2A. Using a charger with less than 2A may cause damage to the machine.

## Specifications

Model	LPPECFFM
Rated Voltage	12V/220V
Capacity	80mL
Brewing Time	3-4 Minutes
Material	Aluminum + ABS Body
Product Size	75 x 75 x 240mm
Product Weight	800g

## Disposal

This product must not be disposed of as unsorted household waste. It is important to separate such waste for proper treatment and recycling, in compliance with local waste management regulations.

## Warranty

Products that you buy directly from our **LePresso** website or shop come with a 24-month warranty.

The 24-month warranty applies to products purchased directly from our **LePresso** website or store. If **LePresso** products are bought from any of our verified retailers, then the product is eligible for only a 12-month warranty. To extend your product's warranty, visit our website <https://www.lepresso.com/warranty> and fill in your details in the provided form along with an uploaded picture of the product to process your request. Once approved, you will receive a confirmation email of the extended product warranty. Upload the required information within 48 hours of purchase to be eligible for a 24-month warranty period.

For more info, please check:

<https://www.lepresso.com/warranty>

## Contact Us

If you have any questions or concerns about our Shipping and Returns Policy, please contact us at: [info@lepresso.com](mailto:info@lepresso.com)

Website: <https://www.lepresso.com/>

Instagram: [lepresso\\_official](https://www.instagram.com/lepresso_official)