

LèPRESSO



LePresso

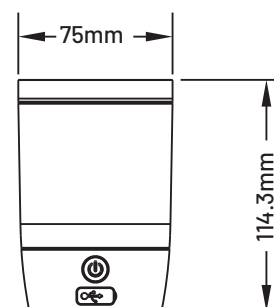
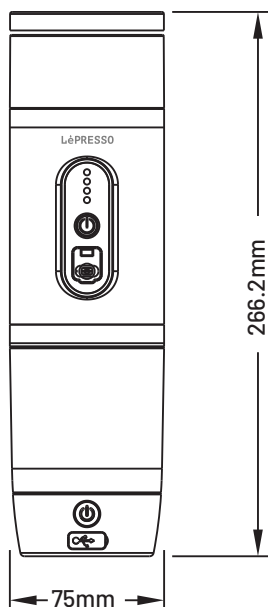
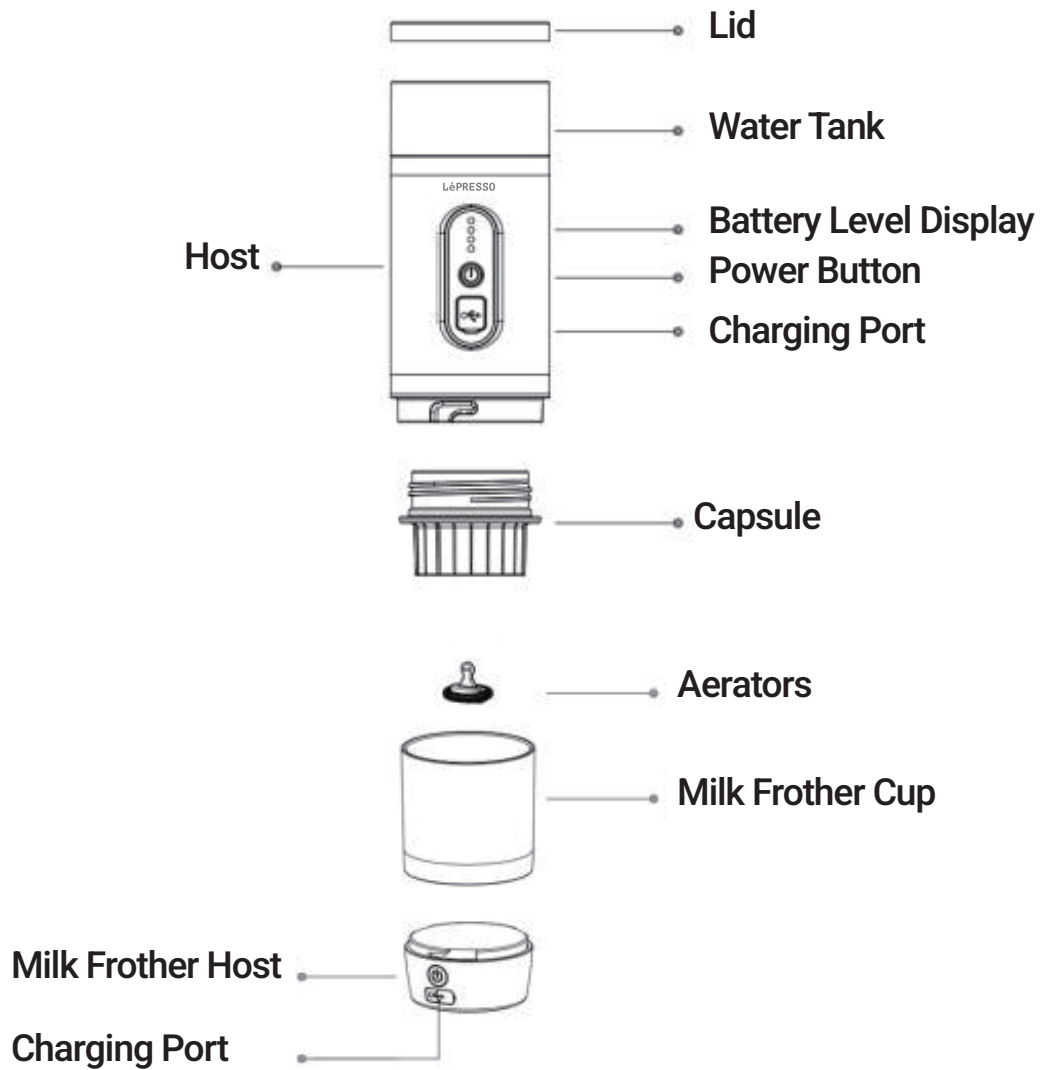
**PORTABREW 4 In 1 Portable
Coffee Machine
with Milk Frother**

SKU: LPCFFM4IN1

Table of Contents

Product Overview	2
Specifications	3
Safety Instructions	3
Guidelines for Brewing Coffee	5
1. Using DG Capsules	5
2. Using Nespresso Capsule	5
3. Using Coffee Powder	6
4. Milk Frothing Function	7
Buzzer Function	7
Frother Cleaning and Maintenance	7
Operating Environment Guidelines	8
Disposal	8
Warranty	9
Contact Us	9

Product Overview



Specifications

Model	LPCFFM4IN1
Rated Voltage	12V
Rated Power	100W
Capacity	80mL
Brewing Time	3-4 Minutes
Compatibility	Coffee Powder, Capsules (Nespresso & DG)
Product Size	266 x 75 x 75mm
Product Weight	1730g

Safety Instructions

When using electrical appliances, please observe the following basic safety guidelines:

- 1.** Before using the appliance, carefully read and retain the instructions for future reference. Follow the usage methods and maintenance instructions provided in the manual.
- 2.** Use the product only with the recommended accessories and components provided with it. Incorrect usage can result in potential hazards.
- 3.** Never leave the product operating unattended.
- 4.** Avoid placing heavy objects on the product.

Warning: There is a risk of electric shock. Do not immerse the milk frother in water or any other liquids, nor use tap water to clean it. Additionally, do not place the product in the dishwasher.

- 5.** Ensure that the product is used in a dry environment.
- 6.** Always place the product on a stable, horizontal surface, and avoid placing it on an inclined or unstable surface.

7. Protect the product from strong heat, extreme cold, direct sunlight, and excessive dust.

8. To prevent fire and electric shock risks, keep the product away from open flames.

Note: When the product is making coffee, the milk frothing function cannot be used simultaneously.

9. Maintain a safe distance from the product during operation, as hot coffee may cause severe burns.

10. Always cover the lid while milk is being frothed and stirred.

11. Consumers must comply with all safety guidelines outlined in this manual.

12. Always supervise children to ensure they do not use this product as a toy.

13. Do not allow children under the age of 8 to clean or maintain the product.

14. Do not exceed the maximum fill line labeled on the milk frother when adding milk.

15. This product is intended for home use only and is not suitable for commercial purposes.

Warning: Exercise caution when handling this product. The product should never be turned upside down during use.



Usage Warning: This product is designed solely for use with the machine as outlined in the instructions for DolceGusto capsules, Nespresso capsules, specialized ground coffee trays for heated coffee, and milk frothing. Any other use may lead to product damage or personal injury.

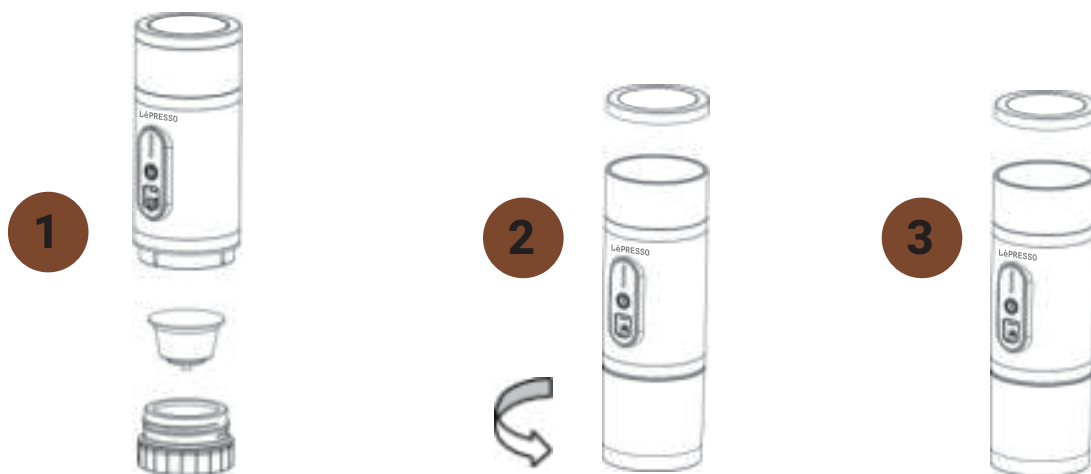
Guidelines for Brewing Coffee

1. Using DG Capsules

To operate the coffee machine, place the coffee capsule in the capsule seat, then securely attach the water tank and fill it with water (no more than 60ml). After adding the correct amount of water, close the lid. Once the machine is powered on, it will begin brewing coffee as normal.

Note:

1. The machine cannot brew coffee and foam milk simultaneously. The milk frothing function must be operated separately.
2. A coffee capsule should be replaced with a new one after each use.



Place the capsule in the capsule seat (See Fig. 1).

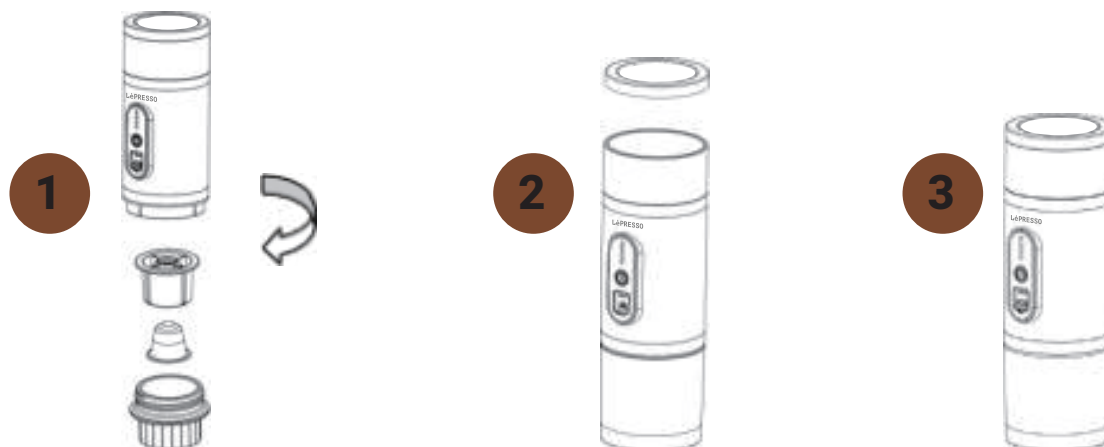
Fill the water tank with a maximum of 60ml of water (See Fig. 2).

Close the lid and allow the machine to brew the coffee (See Fig. 3).

2. Using Nespresso Capsule

Place the Nespresso capsule in the capsule seat, then securely attach the water tank and fill it with no more than 60cc of water. Once the correct amount of water is added, close the lid. When the machine has sufficient power, it will brew the coffee under normal operation.

Note: The machine cannot froth milk and brew coffee simultaneously. The milk frothing function must be operated separately.



Place the Nestle capsule in the capsule seat (See Fig. 1).

Fill the water tank with a maximum of 60ml of water (See Fig. 2).

Close the lid and allow the machine to brew the coffee (See Fig. 3).

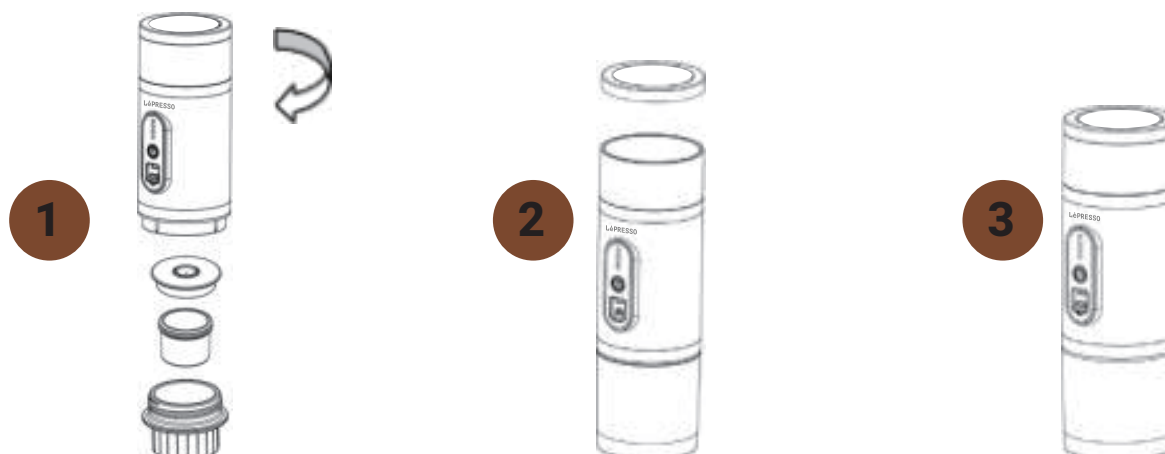
3. Using Coffee Powder

Pour up to 7g of coffee powder into the powder tray cavity, then cover the lid. Securely attach the water tank and fill it with no more than 60ml of water. Once the correct amount of water is added, close the lid and, with sufficient power, the machine will brew the coffee under normal operation.

Note:

1. The machine cannot brew coffee and froth milk simultaneously. The milk frothing function must be operated separately.

2. Add 1 tablespoon of ground coffee (approximately 7 grams).



Pour up to 7g of coffee powder into the powder tray cavity (See Fig. 1).
Fill the water tank with a maximum of 60ml of water (See Fig. 2).
Close the lid and allow the machine to brew the coffee (See Fig. 3).

4. Milk Frothing Function

Insert the frother assembly and pour 45ml of milk into it. Securely close the lid and press the start button to begin the milk frothing operation.

Important Warning:

- a.** Ensure that the cup contains the minimum required water level before operating the milk frothing function.
- b.** Never operate the milk frothing function without the mixer properly installed.



Buzzer Function

- 1.** The main unit is equipped with a buzzer that sounds each time a button is pressed indicating that the program is active.
- 2.** Two short beeps will sound once brewing is complete.
- 3.** If there is an error during the self-test or if an alarm is triggered, the buzzer will continue to sound until the issue is resolved or the alarm is canceled.

Frother Cleaning and Maintenance

Note: To prevent milk residue buildup, always empty and rinse the frother immediately after use. Do not leave liquid in the frother overnight.

Operating Environment Guidelines

- 1.** Keep out of reach of children.
- 2.** please use in a dry place, do not use in high temperature or sunny place.
- 3.** Relative altitude: <6000 feet (<1828 meters).
- 4.** Operating ambient temperature: 0-40°C .
- 5.** Operating ambient humidity: 10 % ~95 %RH

Disposal

This product must not be disposed of as unsorted household waste. It is important to separate such waste for proper treatment and recycling, in compliance with local waste management regulations.



Warranty

Products that you buy directly from our **LePresso** website or shop come with a 24-month warranty.

The 24-month warranty applies to products purchased directly from our **LePresso** website or store. If **LePresso** products are bought from any of our verified retailers, then the product is eligible for only a 12-month warranty. To extend your product's warranty, visit our website <https://www.lepresso.com/warranty> and fill in your details in the provided form along with an uploaded picture of the product to process your request. Once approved, you will receive a confirmation email of the extended product warranty. Upload the required information within 48 hours of purchase to be eligible for a 24-month warranty period.

For more info, please check:

<https://www.lepresso.com/warranty>

Contact Us

If you have any questions or concerns about our Shipping and Returns Policy, please contact us at: info@lepresso.com

Website: <https://www.lepresso.com/>

Instagram: [lepresso_official](#)