



**Green Lion**

**Trim Pro Grooming Kit 1 In 6**

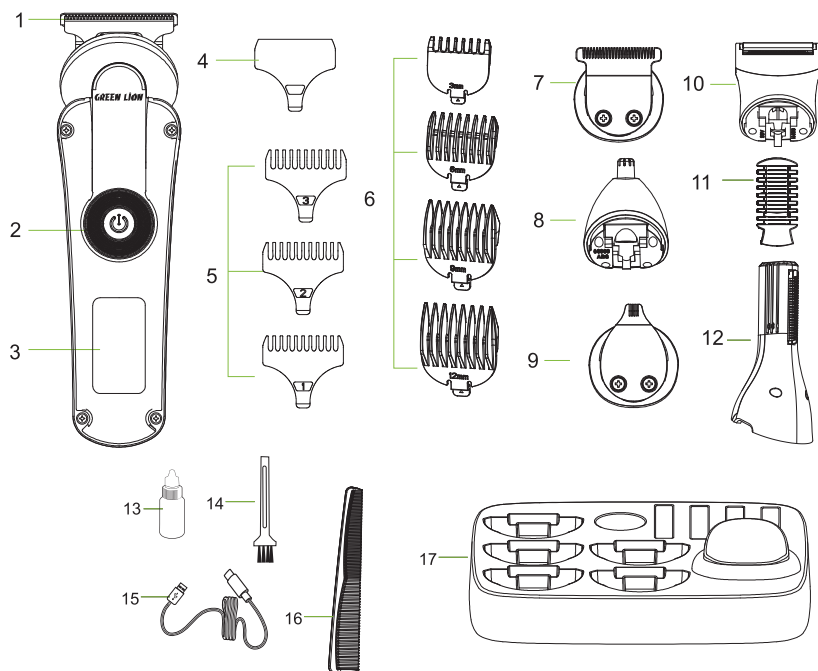
SKU: GN6N1TRMPRBK

Model No: GL-TM39

## Table of Contents

Schematic View	2
Quick Guide	3
Safety Warnings	4
Oil Bottle Instructions	4
Guide Comb Settings	4
How to Use	5
Attaching/Detaching Attachments	5
Hair clipping	6
Trimmer Overview	6
Nose Trimmer	6
Precision Trimmer	7
Body Trimmer	7
Shaver	7
USB Charging	7
Cleaning and Maintenance	8
Specifications	8
Environment Protection Notes	9
Disposal of the Battery	9
Warranty	10
Contact Us	10

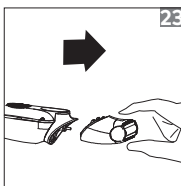
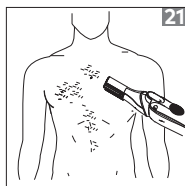
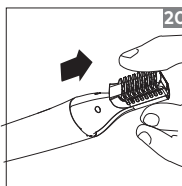
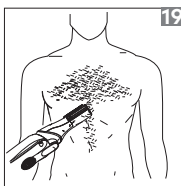
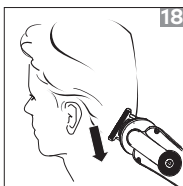
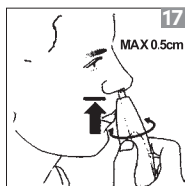
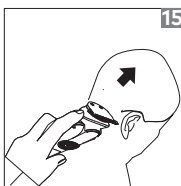
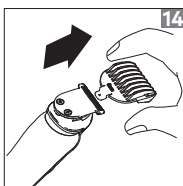
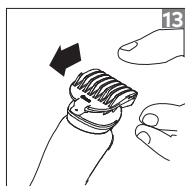
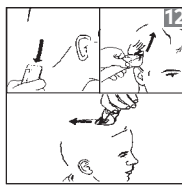
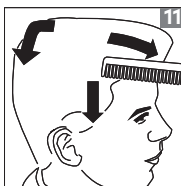
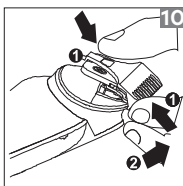
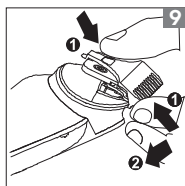
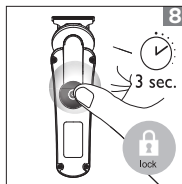
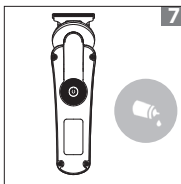
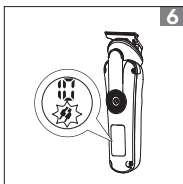
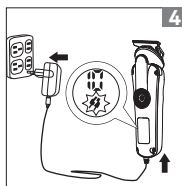
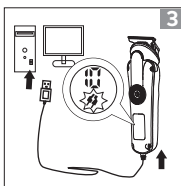
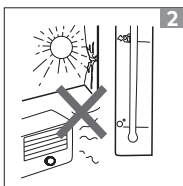
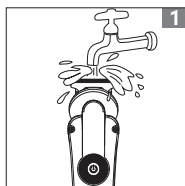
## Schematic View



### PARTS LIST

1. Precision trimmer
2. ON/OFF trimmer with travel lock
3. LED display
4. Protection cap
5. Head shear limit comb (3/2/1mm)
6. Hair clippers limit comb (12/9/6/3mm)
7. Hair clipper
8. Nose trimmer
9. Design trimmer
10. Shaver
11. Body trim tooth comb (9-6-3mm)
12. Body trimmer
13. Oil
14. Cleaning brush
15. TYPE-C charging cable
16. Comb
17. Stand base

# Quick Guide



## Safety Warnings

Before using the product, please carefully read this User Manual to guarantee correct usage and keep it secure for future reference.

1. This product can be used by children aged 8 years and older, as well as by individuals with reduced physical, sensory, or mental capabilities, or those lacking experience and knowledge, provided they are supervised or have received instruction on its proper use. They should also be aware of the hazards involved.
2. **Danger:** Ensure that the USB charging cable does not become wet.
3. The shaver is washable and can be cleaned under running water. However, it should not be exposed to water hotter than 60. (Fig. 1)
4. Keep this instruction manual for future reference.
5. Always check the appliance before use. Do not use the appliance if it is damaged, as this could cause injury. If any part is damaged, replace it with an original part.
6. Do not open the appliance to replace the rechargeable battery.
7. Never use compressed air, scouring pads, abrasive cleaning agents, or harsh liquids such as petrol or acetone to clean the appliance.
8. **Important:** The appliance contains a built-in rechargeable battery. Do not dispose of it in fire, expose it to heat, or use, charge, or store it in a high-temperature environment.
9. The appliance is not intended for use on animals. (Fig. 2)

## Oil Bottle Instructions

1. Keep out of reach of children.
2. Do not swallow.
3. Avoid contact with eyes.
4. Dispose of properly when empty.

## Guide Comb Settings

The following combs are available in a variety of styles to meet your home hair-cutting needs:

3 Oil-head shear limit combs (1/2/3mm), 4 Hair clippers limit combs (3/6/9/12mm), and 1 guide comb (3-6-9mm) for body trimmer.

**Attaching the Guard:** To attach any type of guard to the cutting element, slide the front part of the guard onto the teeth of the cutting element. Then, press down the center of the guard with your fingers or the palm of your hand. (Fig. 13)

**Detaching the Guard:** To detach any guard, carefully pull its back part off the product and then slide it off the cutting element. (Fig. 14)

### Note:

- a. When using the product for the first time, begin with the guard set to the maximum trimming length to familiarize yourself with the device.
- b. Ensure the device is turned off when inserting or removing a cutting guide comb.

## How to Use

1. Press the ON/OFF button to start the unit.
2. Press and hold the ON/OFF button for 3 seconds to activate the travel lock function. (Fig. 8)
3. Press for another 3 seconds or connect the power supply to unlock the device when needed.
4. When the battery is fully charged, the battery capacity indicator will show 100%. (Fig. 5)
5. When the battery is nearly empty, the plug symbol will flash. (Fig. 6)
6. For optimal grooming results, it is recommended to clean and lubricate your hair clipper after each use.
7. After a period of use, the wash reminder symbol will appear, prompting you to clean and lubricate the clipper. (Fig. 7) tt

## Attaching/Detaching Attachments

All attachments (oil-head shear, hair clippers, design trimmer, nose trimmer, shaver, body trimmer) can be attached and detached in the same way.

**To attach** the attachment, place the lug of the cutting unit in the slot and push the cutting unit onto the appliance until you hear a click. (Fig. 9)

**To detach** the attachment, push the middle part of the cutting unit upwards with your thumb until it opens, then pull it off the appliance. (Fig. 10)

## **Hair clipping**

Preparing for Hair Clipping

1. Make sure the appliance is fully charged before clipping.
2. It is not possible to run the appliance from the mains.
3. Only use the appliance on clean, dry hair. Do not use it on freshly washed hair.
4. Make sure that the head of the person whose hair you intend to cut is at the same level as your chest. This ensures that all parts of the head are clearly visible and within easy reach. (Fig. 11)
5. Comb the hair in the direction of growth. (Fig. 12)
6. Put the cutting element on the handle (see section Attaching/Detaching Attachments). (Fig. 15)

## **Trimmer Overview**

Use the design trimmer to create fine lines and contours around your facial style, close to the skin.

Hold the design trimming head perpendicular to the skin and move the trimming head upwards or downwards with gentle pressure. (Fig. 16)

## **Nose Trimmer**

Trimming nose hair

1. Attach the nose/ear hair trimmer to the handle (see section "Attaching/Detaching Attachments").
2. Make sure your nostrils are clean.
3. Switch on the appliance and insert the tip of the trimmer into one of your nostrils.

4. Do not insert the tip more than 0.5 cm into your nostril.
5. Slowly move the tip in and out while turning it round to remove unwanted hair. To reduce the tickling effect, ensure that you press the side of the tip firmly against the skin. (Fig. 17)

## Precision Trimmer

For uniform cutting, allow the trimmer to cut its way through the hair. Do not force it through at a faster rate.

1. Select the desired length on the adjustable comb or choose the desired guide combs, with 3 guide combs (1/2/3mm).
2. Start by combing the hair so it falls into its natural direction.
3. Place the largest guide comb onto your trimmer and begin trimming the sides from the bottom upwards. Hold the trimmer lightly against the hair, with the guide comb pointing up but flat against the head. Slowly lift the trimmer up and outward through the hair, cutting only a small amount at a time. Repeat on the sides and back of the head. (Fig. 12.18)

## Body Trimmer

Detail trimmer for eyebrow styling, etc. Let it help you become a stylish gentleman easily, be confident and handsome anytime and anywhere. (Fig. 19.20.21)

## Shaver

1. Hold the groomer so the mini foil shaver gently touches your face.
2. Use short, well-controlled movements to shave around your
3. beard/moustache. Use your free hand to stretch your skin. This encourages the hair to stand upright, making it easier to shave. (Fig. 22)

## USB Charging

The grooming kit is completely handy to carry and can be charged anywhere with the USB cable.



1. Comes with built-in battery, a full charging time of 2 hours to offer around 120 minutes of running time. Use and charge the device by connecting with the power bank or adapters (5V-2A), or computer. (Fig. 3)
2. The USB charging plug ensures that you can find the charging source conveniently, whether at home or on the travel. (Fig. 4)
3. The LED display shows battery power percentage (00-100).
4. Travel Lock: Press 3 seconds to lock the switch button, press another 3 seconds to unlock it.

## Cleaning and Maintenance

1. Before cleaning the appliance, always switch it off and unplug it.
2. Clean the unit with a damp and soft cloth.
3. To ensure long-lasting performance, it is recommended to clean and oil the appliance regularly.
4. Remove hair from the cutting blade using the cleaning brush, apply 2 or 3
5. drops of oil, and allow the machine to run for several seconds to ensure proper lubrication. (Fig. 23)

## Specifications

Model No.	GL-TM39
Material	ABS
Blade	Stainless Steel
Motor	DC Brushed Motor
Speed	2 Levels
RPM Range	7160-7520
Battery	1400mAh
Power	5V 2A
Charging Port	Type-C
Charging Time	2 Hrs

Working Time	2 Hrs
Waterproof	IPX6
Product Weight	163 g
Product Dimensions	150*42*37 mm
Taper Clipper Head	3/6/9 mm (Limit Combs)
T-Blade Head	3/6/9/12 mm (Limit Combs)
Body Hair Trimmer Headt	3-6-9mm (Limit Combs)

## Environment Protection Notes

Do not dispose of the appliance with regular household waste at the end of its life. Instead, take it to an official collection point for recycling. By doing so, you help preserve the environment.

The built-in rechargeable battery contains substances that may pollute the environment. Always remove the battery before discarding the appliance and take it to an official collection point for batteries. If you have trouble removing the battery, you may take the appliance to a service center where the staff will remove the battery and dispose of it in an environmentally safe manner. (Fig. 24)

## Disposal of the Battery

1. Only remove the battery when it is completely empty.
2. Disconnect the appliance from the mains and allow the appliance to run until the motor stops.
3. Remove any combs and attachments from the appliance.
4. Insert a screwdriver in the groove next to the shaft at the top of the appliance. Turn the screwdriver to separate the two housing halves.
5. Lift the battery out of the housing with a screwdriver.

**Note:** Do not reconnect the appliance to the mains after you have removed the battery.

## **Warranty**

Products that you buy directly from our **Green Lion** website or shop come with a 24-month warranty.

When you buy **Green Lion** products from any of our approved sellers, you only get a 12-month warranty. If you want to extend this warranty, go to our website at [\*\*https://www.greenlion.net/warranty\*\*](https://www.greenlion.net/warranty) and fill out the form with your information. Don't forget to upload a picture of the product too. After we've checked and accepted your request, we'll send you an email to confirm that your product's warranty has been extended.

For more info, please check:

[\*\*https://www.greenlion.net/warranty\*\*](https://www.greenlion.net/warranty)

## **Contact Us**

If you have any questions about this Privacy Policy, please contact us at:

Website: [\*\*https://www.greenlion.net/\*\*](https://www.greenlion.net/)

Sales: [\*\*sales@greenlion.net\*\*](mailto:sales@greenlion.net)

Service Support: [\*\*Support@greenlion.net\*\*](mailto:Support@greenlion.net)

Telegram: [\*\*@greenlion\\_global\*\*](https://t.me/greenlion_global)

Instagram: [\*\*@greenlion\\_global\*\*](https://www.instagram.com/greenlion_global)