

porodo



Porodo

LifeStyle Neck and Back Massager

SKU: PD-LSNBMS-DKGY



Table of Contents

Features.....	2
Safety Precautions.....	2
Schematic View.....	4
Instructions for Use.....	5
Remote Control.....	5
Troubleshooting.....	7
Product Maintenance.....	7
Specifications.....	8
Warranty.....	9
Contact Us.....	9

We appreciate your decision to select our product for your healthcare requirements. Each of our offerings undergoes rigorous testing to ensure they are both safe and dependable for personal use. For a comprehensive understanding of the proper usage and operation of the product, please consult the user manual meticulously.

Features

1. Features 28 flexible airbags for targeted and zoned pressure relief.
2. Offers comprehensive massage coverage for the neck, shoulders, waist, back, and legs, providing a gentle full-body massage experience.
3. Includes a two-level heat compress, offering dual-effect tension relief for both neck and waist areas.
4. Comes with an adjustable neck height to cater to individual comfort preferences.
5. Provides three intensity levels and six intelligent modes for a customizable massage, complete with smart manual controls.
6. Designed with soft, foldable materials for easy storage, making it a space-efficient relaxation tool.
7. This massage chair is ideally suited for use at home or in the office setting.

Safety Precautions

1. Individuals with the following conditions should consult their physician before using the product:
 - Those using a medical electronic device implanted in the body, such as a pacemaker.
 - Those afflicted with heart disease.
 - Those experiencing backbone injury or disease.
 - Those with bone fragility or issues, especially concerning the backbone, or in the immediate aftermath of surgery.
 - Those in postoperative recovery.
 - Pregnant individuals, or those in the postpartum period, or during menstruation.
 - Those battling malignant tumors.
 - Those diagnosed with osteoporosis.

- Those experiencing problems with blood circulation or thrombosis.
 - Those grappling with skin infections or diseases.
 - Those undergoing medical treatment or experiencing any prior or current physical abnormalities.
 - Those with limb or backbone abnormalities or deformities.
 - Those with backbone problems or injuries due to illness or accidents.
 - Those suffering from sensory disturbances, advanced peripheral circulatory disturbances, or diabetes.
2. Prevent water from entering or splashing onto the product's surface.
 3. Water and electricity don't mix—avoid exposing the product to humid environments like bathrooms, shower rooms, or near pools.
 4. Before connecting to a power source, ensure the product voltage matches the supply voltage.
 5. Don't use the product if the plug, cord, or product itself is damaged.
 6. To avoid electric shock, refrain from opening the product's outer casing.
 7. This product isn't intended for use by individuals with disabilities, sensory impairments, or mental impairments (including children) without supervision or guidance from responsible individuals.
 8. Don't attempt to repair damaged products or cords yourself; seek assistance from our specialist or technician to avoid endangering yourself. Otherwise, the product guarantee will be void.
 9. Keep this product out of children's reach and ensure they don't mistake it for a toy. Supervision is necessary.
 10. If you hear unusual sounds from the product, switch it off and disconnect the power immediately.
 11. Don't use the product if the cover is damaged or if there's a mechanical or electronic issue. Reach out to us for support.
 12. Follow the instructions in this user manual when using or placing the product.
 13. Avoid using the product in high-temperature environments or near heat sources like heaters or stoves.
 14. Don't apply medical or cosmetic cream on the product or your body before or during its use.
 15. When massaging around or near the neck, be mindful of roller movements and avoid excessive intensity.

16. Don't damage, bend, stretch, twist, or tie the power cord as it can lead to fire or electric shock.
 17. Avoid using the product directly on bare skin.
 18. Recommended usage time for individuals is 15 minutes at a time.
 19. Remove all accessories from the body before using the product.
 20. Refrain from using the product while sleeping, under the influence of alcohol, or during a fever.
 21. Wait at least an hour after eating before using the product.
 22. If you notice any abnormalities, stop using the product and consult a doctor immediately.
- Notice:** Our product adheres to all standards concerning electromagnetic fields (EMF). When handled correctly and following the instructions in this user manual, the product is safe to use.

Schematic View

1. Pocket of Remote Control

2. Fastening Belt

3. Remote Control

4. Adapter

5. Power Cord

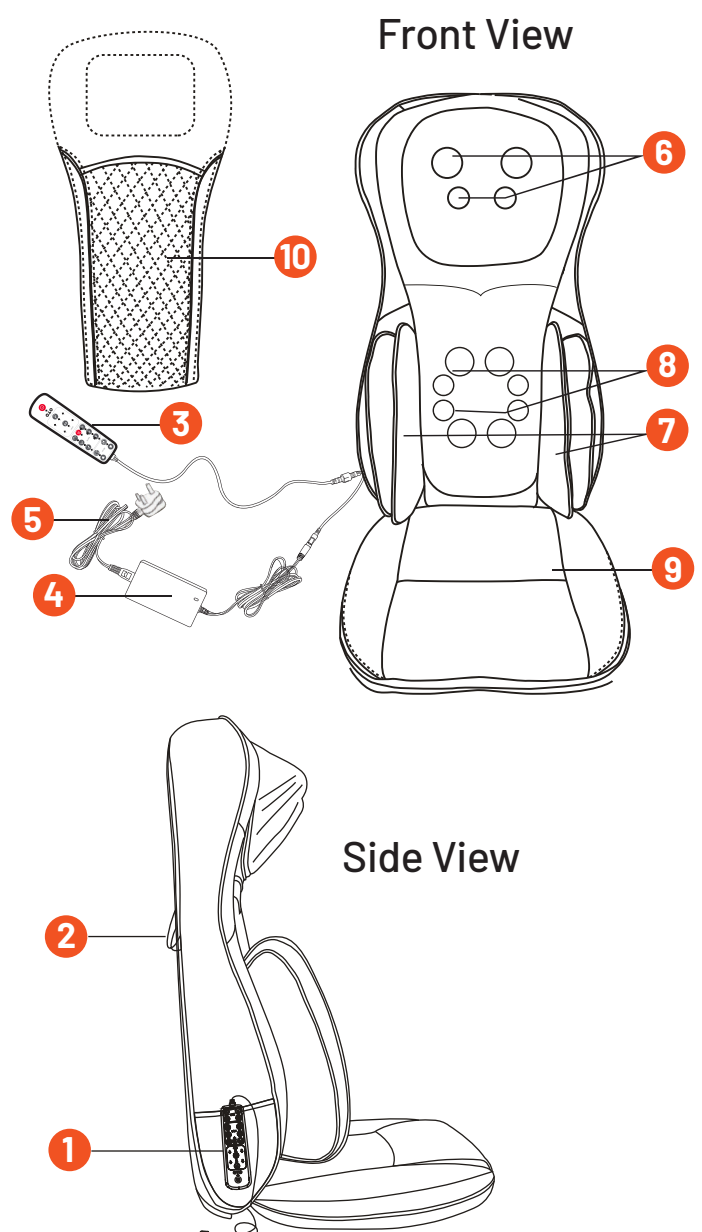
6. Massage Heads of Neck

7. Seat Airbags


8. Massage Heads of the Back

9. Seat

10. Cloak



Instructions for Use


1. Position the product on a chair or sofa with a backrest.
2. Insert the main plug into the wall socket.
3. Press the On/Off () button, then choose the desired massage mode.


Note: The auto-timer is set for 15 minutes. Afterward, the product automatically switches off to prevent overheating.

4. Always remember to unplug the AC power plug after use.


Remote Control

1. () Spot Massage on Neck (Up / Down):


A. Up: Press and hold the Up button () to raise the neck massage mechanism to your preferred height. Release the button to stop the adjustment.

B. Down: Press and hold the Down button () to lower the neck massage mechanism to the desired level. Release it to halt.




2. () Manual Kneading Massage on Neck:

Activate the kneading massage in a clockwise motion by pressing the Kneading button () once, which is indicated by a steady light. Press again to switch to a counter-clockwise direction, with the light flashing to indicate the change. A third press will turn off the neck massage, with the light going out to show it has stopped.

3. () Auto Kneading Button on Neck:

Press the Auto Knead button () to initiate an automatic kneading massage. The light will turn on to signal activation. The mechanism will alter the direction of rotation every minute. To discontinue the massage, press the button once more, extinguishing the light.

4. () Shiatsu Massage on Back (Full / Upper / Lower):

Select from the three preset massage zones—Full, Upper, or Lower—by pressing the corresponding Shiatsu buttons (  ). Press the button associated with your chosen area to start the massage, with the light illuminating to indicate selection. To switch off the active massage setting, press the other button, which will cause the light to turn off.

5. (Spot / Up / Down) Spot Massage on Back (Spot / Up / Down):

Activate or deactivate the spot massage feature during a Shiatsu back massage by pressing the Spot button (Spot). To adjust the massage mechanism's position, use the Up/Down button (Up / Down); the corresponding indicator will blink to reflect the movement direction.

6. (Heat) Heat Therapy on Back:

The Heat button (Heat) becomes operational when the back massage function is active. Press it once to initiate the heat therapy, which is indicated by the light turning on. A subsequent press will discontinue the heat therapy, with the indicator light turning off to signify its deactivation.

7. (Air) Air Massage:

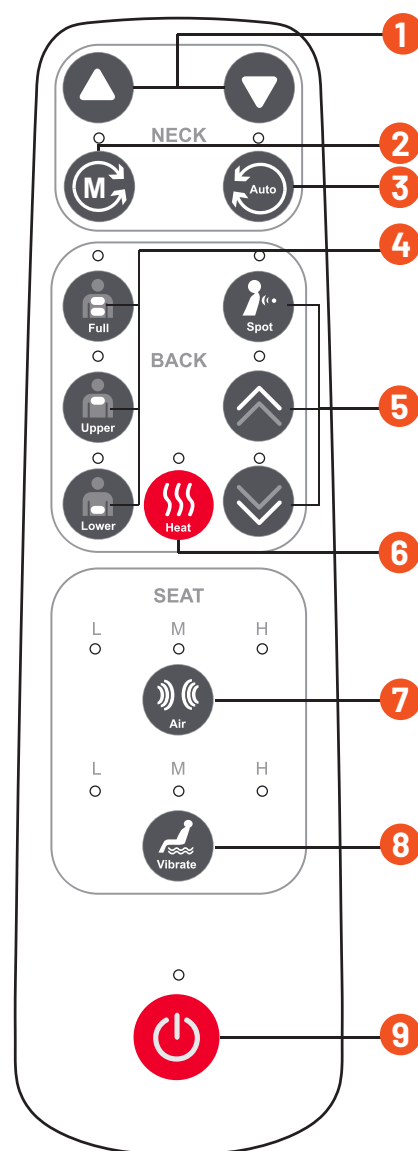
Choose between three levels of air pressure massage intensity—Low, Medium, or High—by pressing the Air Massage button (Air). The default setting is Low, indicated by a lit indicator. Press once to increase to Medium intensity, and again for High. To turn off the air massage, press the button a fourth time, which will turn the indicator light off.

8. (Seat Vibration):

To select from three vibration massage intensity levels—Low, Medium, or High—press the Vibration button (Vibrate). The initial press sets the function to Low intensity, indicated by an illuminated light. Press again to elevate the intensity to Medium, and once more to reach High. To cease the vibration, press the button a fourth time, which will also turn the indicator light off.

9. (ON/OFF Button):

Activate the ON/OFF button (ON/OFF) to place the product in standby mode; this is signaled by the indicator light being on. Press again to power down the product entirely, which will be indicated by the light turning off.



Troubleshooting

This section provides an overview of the most prevalent issues you may encounter. Should the information provided here not resolve your issue, please reach out to us immediately for assistance.

Problem	Possible Cause	Solution
The product does not operate	The product is not correctly connected to a power source.	Verify that the product's voltage is compatible with your local mains electricity supply before reconnecting.
	The product has completed its 15-minute automatic timer session and has entered standby mode by default.	To initiate a new session, reactivate the product using the On/Off switch, then engage the relevant function key.
	The product has been in use for over 30 minutes, triggering the activation of its built-in overheat protection feature.	Disconnect the product and allow a 60-minute interval for it to cool down prior to subsequent use.
	The product has been subjected to a load that exceeds its operational capacity.	Diminish the load on the product before resuming operation.
The product becomes excessively hot	The product may be experiencing wear from frequent use.	Allow the product to cool off before reusing it.
There is audible noise emanating from the product	The operational noise is originating from the mechanical components within the product.	Operational noise is typical during use and is not indicative of a defect.

Product Maintenance

A. Cleaning

1. Avoid using steel wool, abrasive cleaners, or corrosive liquids (such as gasoline, acetone, or alcohol) to clean the product.
2. Disconnect the plug from the power outlet.
3. Use a dry cloth to wipe clean the product, remote control, and power cord.
4. Do not use a damp cloth or detergent.

B. Storage

1. Disconnect the plug from the power outlet.
2. Store the product in a cool, dry place away from sunlight.
3. Avoid placing heavy objects on the product.

Specifications

Product Name	Porodo LifeStyle Neck and Back Massager
SKU	PD-LSNBMS-DKGY
Type	Neck & Back Massager
Rated Voltage	AC 100-240V 60/50Hz
Power Consumption	60W
Auto Timer	15min
Dimension (Folded)	785(H)×230(W)×450(L)mm (±5mm)
Dimension (Unfolded)	785(H)×480(W)×450(L)mm (±5mm)
Box Dimension	490(H)×235(W)×810(L)mm
Net/Gross Weight	Approx. 7.6/9.5kg (±0.5kg)
Safety Certificates	CE, GB4706.1-2005, GB4706.10-2008

Warranty

Products that you buy directly from our **Porodo** website or shop come with a 24-month warranty.

When you buy **Porodo** products from any of our approved sellers, you only get a 12-month warranty. If you want to extend this warranty, go to our website at **<https://porodo.net/warranty>** and fill out the form with your information. Don't forget to upload a picture of the product too. After we've checked and accepted your request, we'll send you an email to confirm that your product's warranty has been extended.

For more info, please check:

<https://www.porodo.net/warranty>

Contact Us

If you have any questions about this Privacy Policy, please contact us at:

info@porodo.net

Website: **porodo.net**

Service Support: **support@porodo.net**

Instagram: **[porodo](https://www.instagram.com/porodo)**