

**PORODO**  
LIFESTYLE



**Porodo Lifestyle**

**5-Step Ladder and Clothes Rack**

SKU: PD-LFST141



# Table of Contents

Expansion Steps	2
Pre-use Safety Check	3
Specifications	4
Safety Guidelines	4
Disposal	5
Warranty	5
Contact Us	5

## Expansion Steps

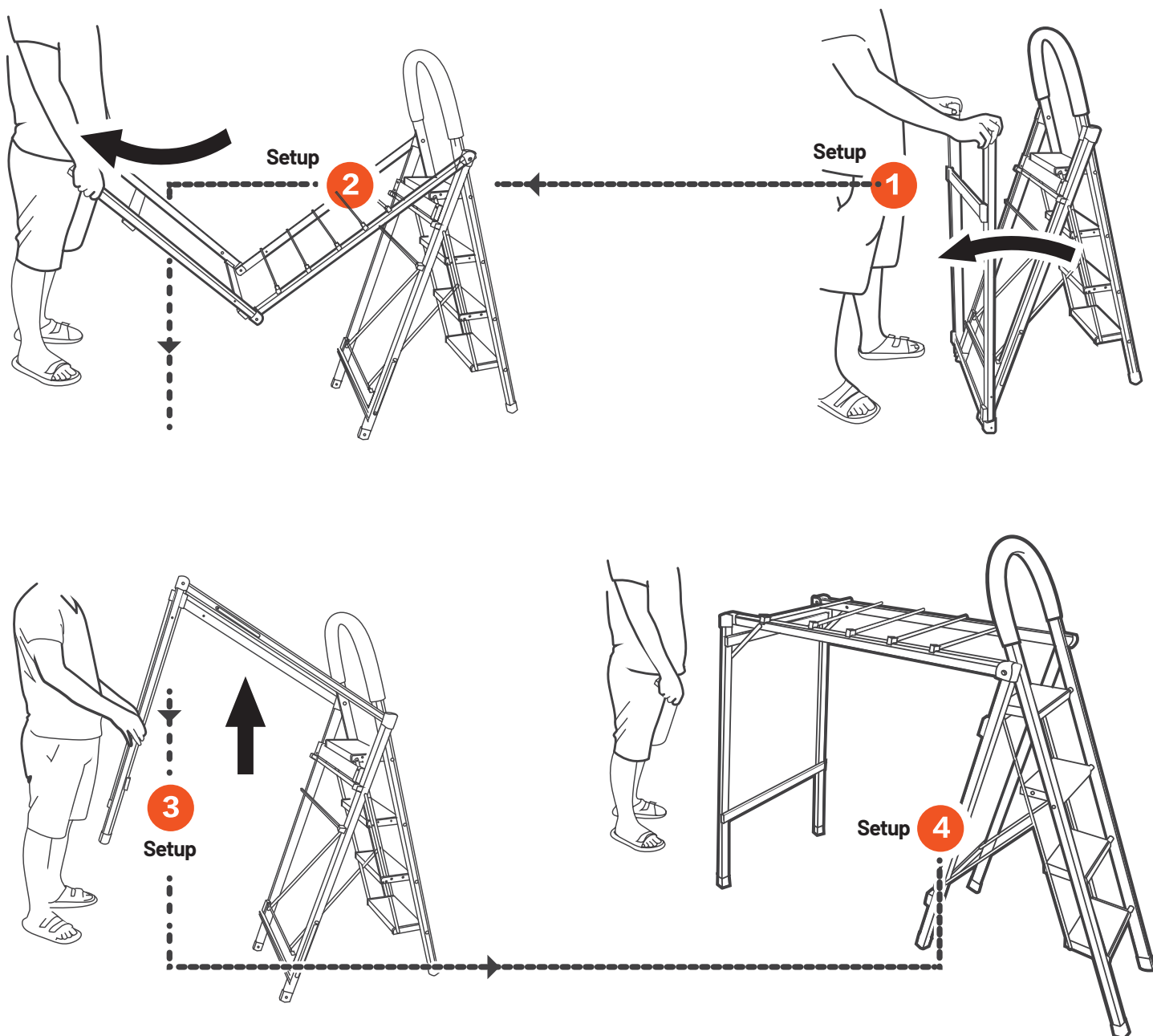
### 1. Unfold the Ladder:

**1.1** Place the folded ladder on a horizontal surface. Ensure it's steady, then slowly begin pulling it out.

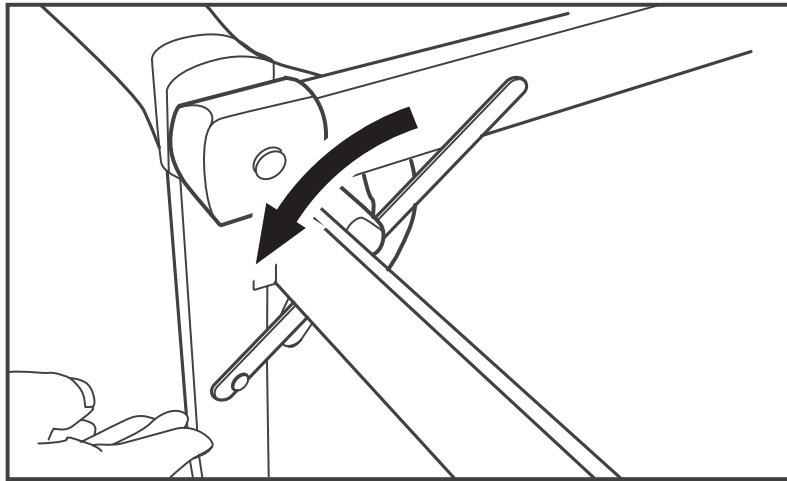
**1.2** Pull the ladder into an "L" shape. Ensure the structure is stable as you expand it.

**1.3** Gently lift the dryer rack portion and set it down carefully.

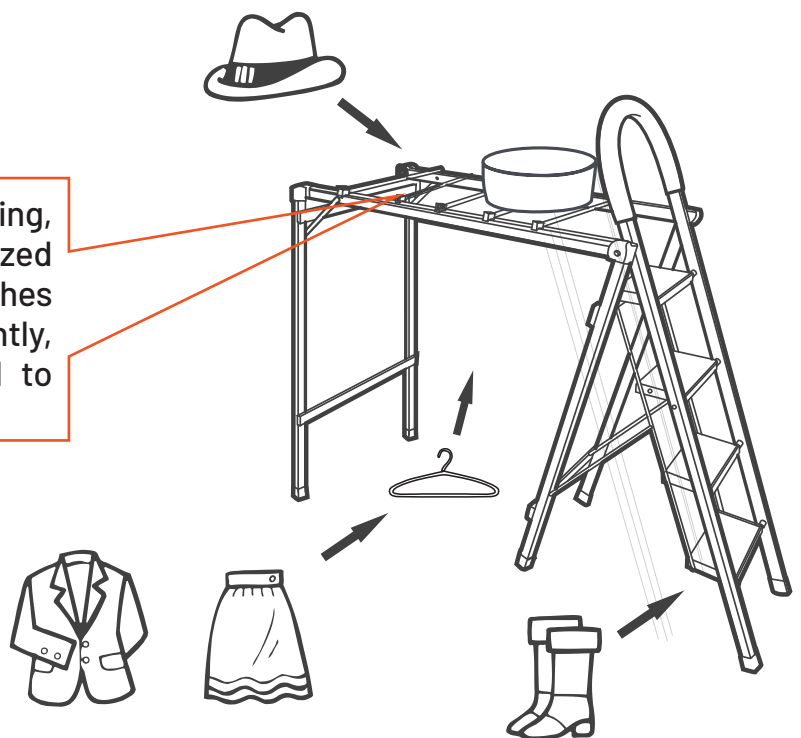
**1.4** Continue unfolding the ladder, ensuring each part is fully extended.



2. Securely tighten the triangle link to make sure there are no loose parts.



Ensure that all items, such as tools, clothing, and other belongings, are properly organized and stored on the 5-Step Ladder and Clothes Rack. Utilize the available space efficiently, making sure items are securely placed to avoid clutter and maintain easy access.



## **Pre-use Safety Check**

Before using the ladder or clothes rack, always perform a quick visual inspection to ensure it's safe for use. This pre-use check should include:

1. Inspecting the ladder for any cracked or bent steps or rungs.
2. Checking for any corrosion on the metal parts.
3. Ensuring that all fittings and ties are secure and undamaged.

## Specifications

Body Material	1.0mm Aluminum
Ladder Bearing	90kg
Dry Rack Bearing	50kg
Max. Ladder Height	108.5cm
Product Size	161.5×50.5×5.5cm(Folded), 152×50.5×171cm(Unfolded)
Product Weight	6.3kg
Model Number	LFS141

## Safety Guidelines

### **a.** Safe Practices:

- 1.** Conduct a pre-use check daily.
- 2.** Ensure the ladder is properly secured.
- 3.** Set up the ladder on firm, stable ground (avoid using it on movable surfaces like scaffolds or pallets).
- 4.** Maintain a strong upper resting point.
- 5.** Use the ladder only for short-duration tasks.
- 6.** Always grip the stiles while climbing.

### **b.** Unsafe Practices:

- 1.** Do not overreach; keep your belt buckle between the stiles, with both feet on the same rung.
- 2.** Avoid performing tasks that cause sideways loading.
- 3.** Never move the ladder while standing on the rungs.
- 4.** Do not extend the ladder while standing on a rung.

## **Disposal**

This product must not be disposed of as unsorted household waste.

It is important to separate such waste for proper treatment and recycling, in compliance with local waste management regulations.

## **Warranty**

Products that you buy directly from our **Porodo** website or shop come with a 24-month warranty.

When you buy **Porodo** products from any of our approved sellers, you only get a 12-month warranty. If you want to extend this warranty, go to our website at **porodo.net/warranty** and fill out the form with your information. Don't forget to upload a picture of the product too. After we've checked and accepted your request, we'll send you an email to confirm that your product's warranty has been extended.

For more info, please check:  
**porodo.net/warranty**

## **Contact Us**

If you have any questions about this Privacy Policy, please contact us at:

**info@porodo.net**

Website: **porodo.net**

Service Support: **support@porodo.net**

Instagram: **porodo**