

Porodo

AI Tracker Gimbal P7C Pro Plus

SKU: PD-AITGM



Table of Content

Quick Start	2
Installing the Smartphone	2
Powering On the Device	3
Bluetooth Connectivity	3
Selection of Operation Mode	3
Schematic View of Porodo AI Tracker Gimbal	6
Additional Features	8
Charging Information	9
Turning Off the Device	10
Caution	15
Storage and Maintenance	15
Warranty	16
Contact Us	16

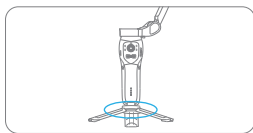
Quick Setup

Before setting up the product, please carefully read this User Manual to ensure the correct and safe usage of the device.

Note: This product can be powered on without a smartphone attached and allows for easy removal of the phone during use (e.g. when taking a phone call).

Step 1: Installing the Smartphone

1. Attach the Tripod to the Gimbal. Securely fasten the tripod to the gimbal's base as shown in the illustration.



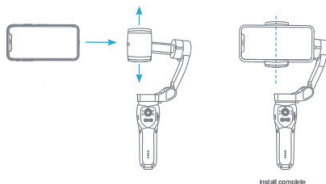
2. Prepare the Smartphone for installation as follows

2.1. Remove the smartphone case to ensure a secure fit.

2.2. Hold the smartphone horizontally with the camera facing left.

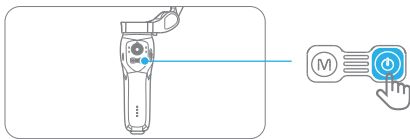
2.3. Extend the smartphone holder and place the smartphone into it.

2.4. Adjust the position of the smartphone so that it is centered within the holder.



Step 2: Powering On the Device

To turn on the device, press and hold the power button for one second.



Bluetooth Connectivity

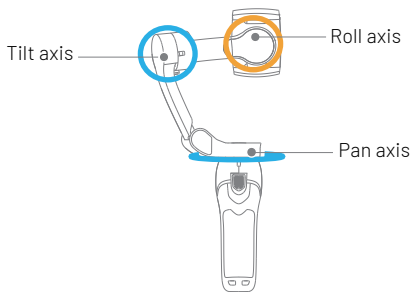
To connect the device to the smartphone via Bluetooth, proceed with the following steps:

1. Turn on the device.
 2. Enable Bluetooth connection on your smartphone.
 3. Navigate to the Bluetooth settings page on your smartphone.
- From the list of available devices, select and pair with the device.

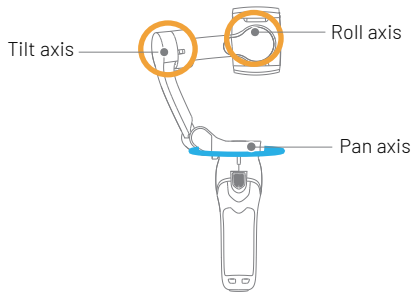
Selection of Operation Mode

This device operates on four different modes, including All Follow (AF), Half Follow(HF), Lock Full (LF), and First person view (FPV). Note that the Half Follow (HF) mode is the default setting when the device is turned on.

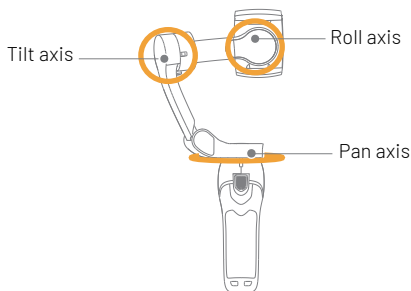
All Follow (AF): In this mode, the Roll axis remains stationary. The Pan axis rotates left and right. The Tilt axis moves up and down with respect to the motion of handle.



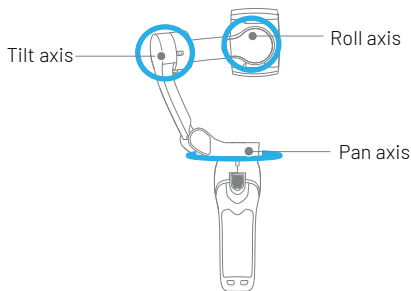
Half Follow (HF): In HF mode, the Tilt and Roll axes are both fixed. The Pan axis moves smoothly left and right in correspondence with the handle's motion.



Lock Full (LF): In this mode, all three axes – Pan, Tilt, and Roll – are fixed. The device maintains a steady position regardless of handle movement, ensuring that it does not track the handle's motion.



First Person View (FPV): Activating this mode allows for tracking of the motion of the handle by all axes, namely, Pan, Tilt, and Roll. The FPV mode offers a dynamic, first-person perspective.



Schematic View of Porodo AI Tracker Gimbal

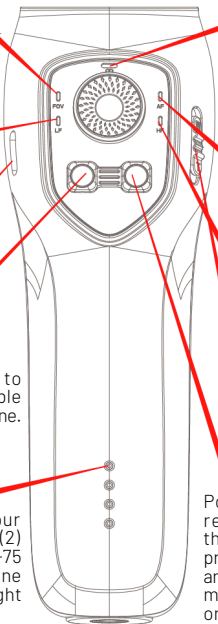
FPV (First Person View) The Gimbal's Pan, Tilt, and Roll axes track the movement of the handle

LF (Lock Full) The smartphone remains stationary in one direction.

Charging Port

Mode Button: Single press to switch between modes. Double press to recenter the smartphone.

Power Level Indicator: (1) Four lights indicate %100 power. (2) Three lights signify (3) .%99-75 Two lights show (4) .%74-50 One light means (5) .%49-25 No light indicates less than %25.



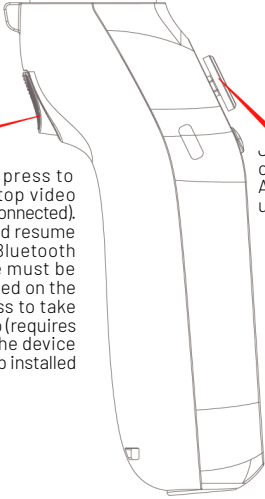
Bluetooth Indicator: (1) Slow flashing indicates Bluetooth is not connected. (2) Fast flashing signifies Bluetooth is connecting. (3) Steady light confirms Bluetooth is connected.

AF (All Follow): The smartphone tilts left/right and up/down following the handle's movement

HF (Half Follow): The smartphone tilts left/right following the handle's movement.

Zoom: Slide up/down to zoom in and out (the device must be connected to the app installed on the smartphone).

Power Button: (1) Single press to reset horizontal view or turn on the gimbal from standby. (2) Double press to switch between photography and video recording mode (the device must be connected to the app installed on the smartphone). (3) Triple press to switch between front-facing and rear-facing camera (the device must be connected to the app installed on the smartphone).



Shutter Button: (1) Single press to capture a photo or start/stop video recording (when Bluetooth is connected). (2) Double press to pause and resume video recording (requires Bluetooth connection and the device must be connected to the app installed on the smartphone). (3) Triple press to take photos while recording video (requires Bluetooth connection and the device must be connected to the app installed on the smartphone)

Joystick: Use the joystick to control the motion of the Porodo AI Tracker Gimbal in left, right, up, and down directions.

Additional Features

Combine Button

To reset the Bluetooth connection simultaneously pressing the shutter and power buttons. This allows for quick re-pairing with a new device.

Work Mode

The device is compatible with both landscape and portrait orientations.

Underslung Mode

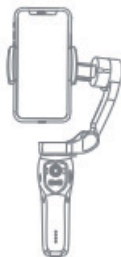
Inverting the device enables the low-angle shooting and activates the underslung mode.

Side Grip Mode

Rotating the device 90° to the right or left results in a transition from the upright to the side grip mode. The Side Grip Mode is applicable to both landscape and portrait modes.



Landscape mode



Portrait mode



Underslung mode

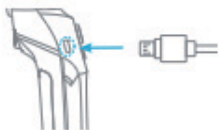


Side-grip mode

Charging Information

This product is compatible with fast charging and it is recommended to use a 5V/2A adapter for charging the gimbal.

Note: The gimbal supports usage while it is charging, allowing for uninterrupted operation.



Charging

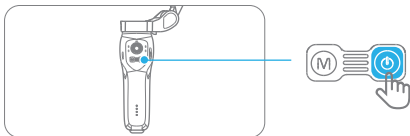


Charging Completed

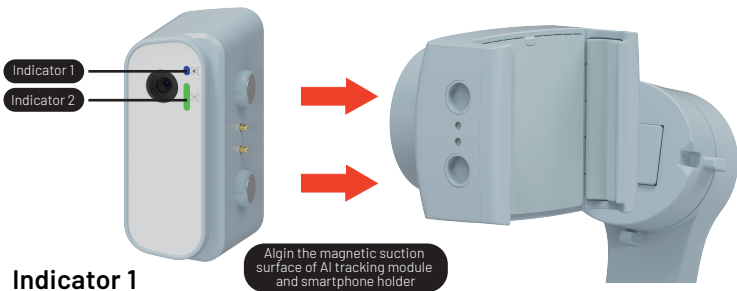
Turning Off the Device

To power off the device, press and hold the power button for one second (1 Sec) until the indicator lights turn off.

Note: The gimbal will automatically return to its folding position for easy storage.



AI Tracker Gimbal P7C Pro Plus Module Instructions



Indicator 1

OFF: The gesture recognition function is deactivated.

ON: The gesture recognition function is activated.

Flashing 3 times: Gesture recognition is being initialized.

Flashing continuously: The device's Bluetooth is pairing with the AI tracking module.

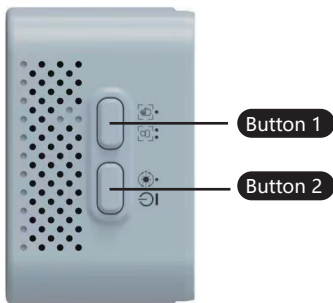
Indicator 2

OFF: Deactivates face tracking option.

ON: Face tracking option activated and the face is recognized.

Flashing light: Face tracking option activated. No face is detected.

Default: upon starting the device both facial recognition and face tracking features are activated.



Button 1:

Single press: Activates and deactivates the gesture recognition feature.

Double press: Activates and deactivates the face tracking feature.

Button 2:

Press and hold the bottom: Turn the LED lights ON and OFF

Single press: Switches the light mode and brightness level.

Light mode:

Mixed light: soft, mid, strong

Warm light: soft, mid, strong

White light: soft, mid, strong

Gesture:

Scissor hand gesture: Activates face tracking. ✌️

Palm gesture: Deactivates face tracking. 🖐️

App connectivity

This device is capable of functioning and capturing basic photography in the absence of a connection to the App. However, installing the App on the smartphone provides the user with further features, including a zoom option, panoramic view, face/gesture tracking, and setting time delays.

To install and use the app follow these steps:

1. Scan the QR code or search "Gimbal Pro" app on Google Play or App Store.
2. Download and install the app.
3. Enable Bluetooth connection on the smartphone.
4. Open the app and from the list of products choose the device with the name "GP7_XX". select the device to connect.



Support iOS and Android

QR code

Specification

Tile angle	160°
Roll angle	325°
Pan angle	340°
Net. weight	355 gr
Payload	280 gr
Working temperature	0°C to 40°C
Controllable tile angle	-30+/-°30°
Controllable roll angle	-90+/-°90°
Controllable pan angle	-240+/-°100°
Working voltage	4.2~3.4 V (Standard 3.7 V)
Compatible smartphone range	Diagonal≤ 180 mm Width 90-55 mm Thickness≤ 9.5 mm
Working Current	3000-150 mA (Standard 1500 mA)
Gimbal dimension	260×130×88 mm (Unfold) 152×110×46.6 mm (Folded)
Charging time	80 mins (Use 5V/2A adapter)
Working time	5-4.5 Hr
Face tracking	YES
App	YES
Input voltage	5V
Input Current	2A

Caution

1. Make sure that nothing obstructs the motor's rotation when the stabilizer is activated.
2. Avoid exposing the stabilizer to sea water or any corrosive substances.
3. Disassembling the stabilizer is not recommended, except for changing detachable accessories as outlined in the manual.
4. Continuous operation may lead to an increase in the motor's surface temperature. Allow the motor to cool as necessary.
5. Dropping or striking the stabilizer can result in damage or malfunction and should be avoided.

Storage and Maintenance

1. Store the product out of reach of children and pets.
2. Do not place the product near heat sources, such as furnaces or heaters, or leave it in a vehicle during hot weather.
3. The product should be stored in a dry environment to prevent damage.
4. To preserve the battery's lifespan, avoid overcharging or completely draining the battery.
5. Operating the product in extremely hot or cold temperatures is discouraged as it may affect performance.

Warranty

Products that you buy directly from our Porodo website or shop come with a 24-month warranty.

When you buy Porodo products from any of our approved sellers, you only get a 12-month warranty. If you want to extend this warranty, go to our website at <https://porodo.net/warranty> and fill out the form with your information. Don't forget to upload a picture of the product too. After we've checked and accepted your request, we'll send you an email to confirm that your product's warranty has been extended.

For more info, please check:
porodo.net/warranty

Contact Us

If you have any questions about this Privacy Policy, please contact us at: info@porodo.net

Website: porodo.net

Service Support: support@porodo.net

Instagram: [porodo](https://www.instagram.com/porodo)