

# LèPRESSO Coffee Maker

With Capsule Auto Ejection System

SKU:LPCMAESBK



## Introduction

We appreciate you choosing our coffee maker. To ensure optimal use and maintenance of this product, we have meticulously crafted this manual for your benefit. Please review this manual thoroughly before operating the device and retain it for future reference.

This manual pertains exclusively to our "LPCMAES" series coffee makers, and we hold the exclusive right to interpret its contents. The information provided herein is solely for reference. Should you encounter topics not covered within these pages, our customer service department is available for consultation. We are receptive to constructive feedback concerning this manual's potential shortcomings. We aspire for our products to enhance your life with warmth, convenience, and wellness.

## Safety Precautions for Use

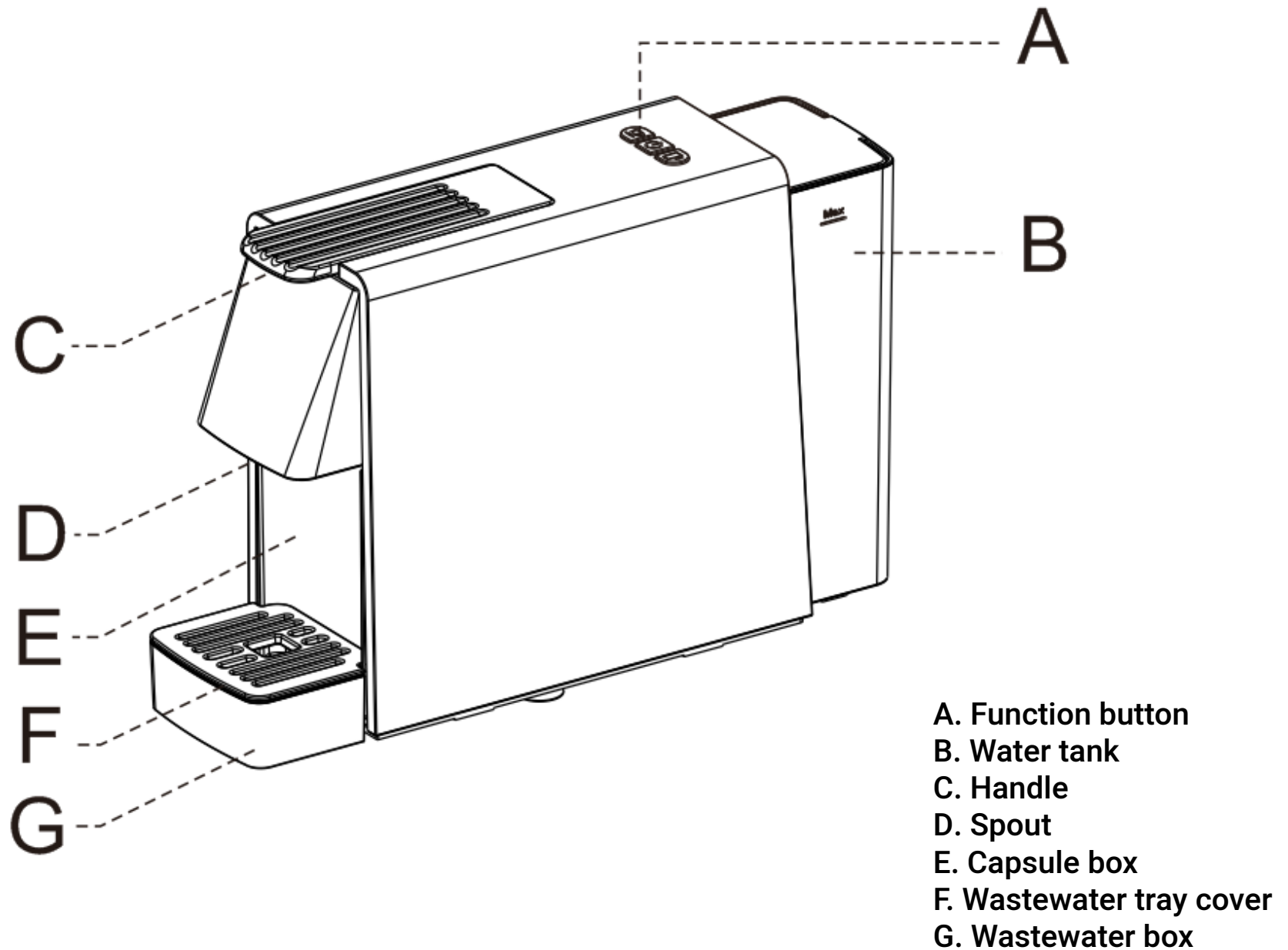
Prior to using the device, it is imperative to read this manual carefully and consider the following safety precautions. Ensure the coffee maker is turned off before disconnecting it from the power source:

1. Risk of electric shock: Avoid contact with the power plug, socket, or power supply when hands are wet. Never disconnect the power by pulling on the cord.
2. Risk of scalding: Refrain from relocating the appliance while it is in operation.
3. Risk of scalding: Avoid touching parts of the machine that become hot or emit steam/water during use.
4. Risk of scalding: Do not operate the machine with the handle open.
5. Risk of electric shock: Do not expose the machine, its power cord, or plug to liquids.

6. Prior to disconnection: Allow the machine to cool before unplugging it.
7. Voltage check: Before powering the device, verify that the local voltage corresponds with the manufacturer's specifications.
8. Special requirements: The appliance is not designed for those with disabilities or children without proper supervision.
9. Child safety: Prevent children from using or playing with the appliance.
10. Damage control: If the plug, cord, or device is damaged, cease use and contact service immediately. Do not attempt repairs or alterations.
11. Usage limitations: This appliance is intended for domestic use only and not for other applications.
12. Placement: Position the appliance on a stable, heat-resistant surface away from moisture, dust, and flammable materials to prevent accidents.
13. Malfunction protocol: Cease use immediately if the appliance functions abnormally.
14. During use: Do not cover the steam vent or obstruct the coffee outlet to prevent burns.
15. Face safety: Keep your face away from steam and water emissions during operation to avoid scalding.
16. Normal operation: Minor vibrations during use are normal and may cause slight movement of the unit.
17. Handle with care: Keep the handle closed while brewing.
18. Prevent obstruction: Ensure the cup area is clear to avoid mishaps.

19. **Childproofing:** Store coffee capsules out of children's reach.
20. **Water tank safety:** Do not inject hot water into the tank.
21. **Power cord caution:** Detach the plug by gripping it directly, not the cord.
22. **Contact avoidance:** Do not touch the appliance's hot surfaces.
23. **Non-disassembly:** Do not take the machine apart.
24. **Cleaning instructions:** Disconnect the power before cleaning and never immerse the appliance in water.
25. **Outdoor use restriction:** To prevent damage, do not use the appliance outdoors.
26. **Wet operation warning:** If the appliance becomes wet, disconnect it immediately and consult service.
27. **Regular inspection:** Periodically inspect the appliance for damage and discontinue use if any is found.
28. **In the event of damage to the power cord, plug, or any component, or if a functional failure occurs, it is strictly prohibited to continue using the product. Please submit the product to the designated maintenance center or service shop for examination, servicing, and replacement by qualified personnel.**
29. **Residual Heat Warning:** After use, the surface of the heating element may remain hot. Please be cautious.
30. **Using the Coffee Maker:** Do not place the coffee maker in a cabinet while it is in use.
31. **Cleaning and Maintenance of the Coffee Maker:** Cleaning and maintenance of the coffee maker should be performed under adult supervision. Do not allow children to clean or maintain the device without supervision. Please adhere to these instructions to ensure the safe and proper use of the device.

## Parts Information



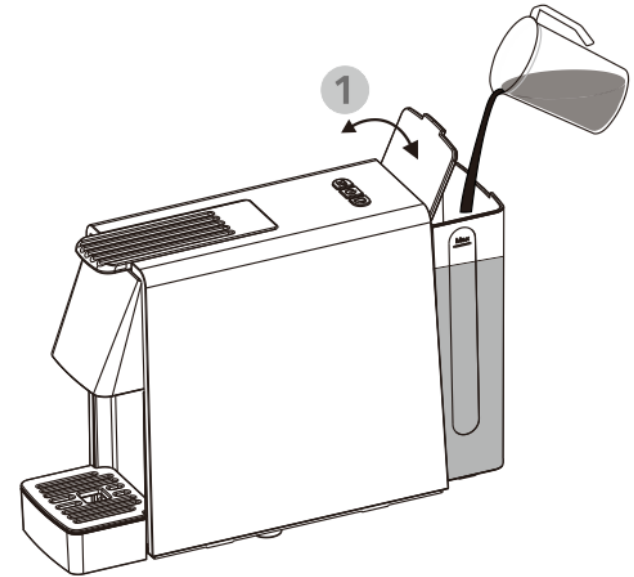
## Directions for Use

To ensure optimal performance, especially if the coffee maker is new or hasn't been used for a considerable time, it is essential to flush the system. Follow the steps below to perform the flushing:

### 1. Filling the Water Tank

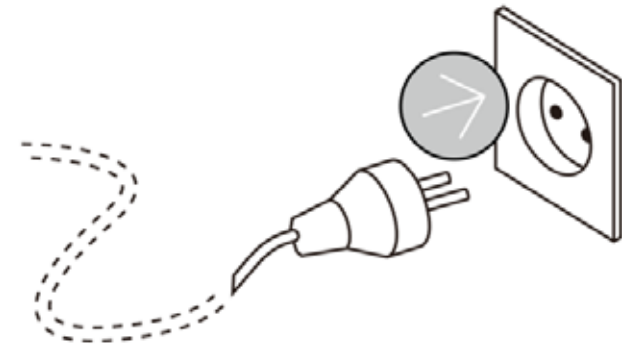
\*Open the water tank lid.

\*Fill the tank with no more than 0.6 liters of fresh water at a temperature not exceeding 35°C.



### 2. Connecting Power

Plug the machine into the appropriate power outlet.



### 3. Starting the Machine

**\*Press the On-Off button.**

**\*The machine will begin preheating; this process takes approximately 45 seconds, after which all indicator lights should remain illuminated.**

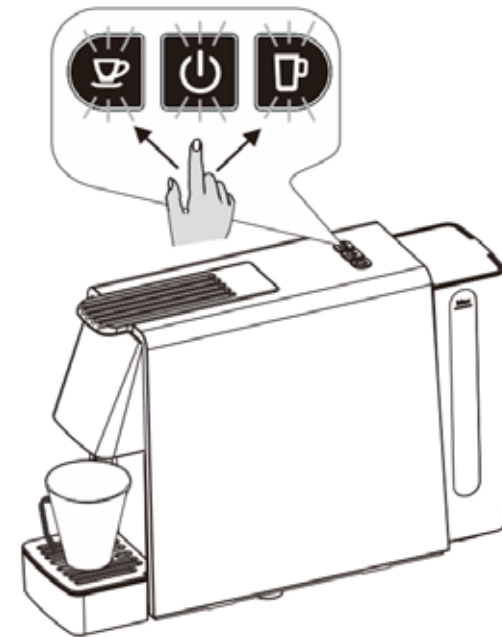


### 4. Flushing the Machine

**\*Place a receptacle with a capacity of more than 200 milliliters under the wastewater tray.**

**\*Select the desired cup size button and allow the machine to run a flush cycle.**

**Note: Ensure the handle is secured before starting the flush. The coffee pod holder should be empty and placed correctly within the unit.**

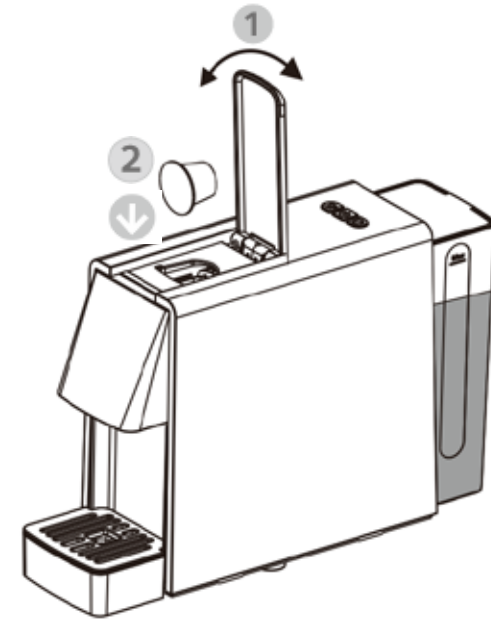


# Brewing Coffee

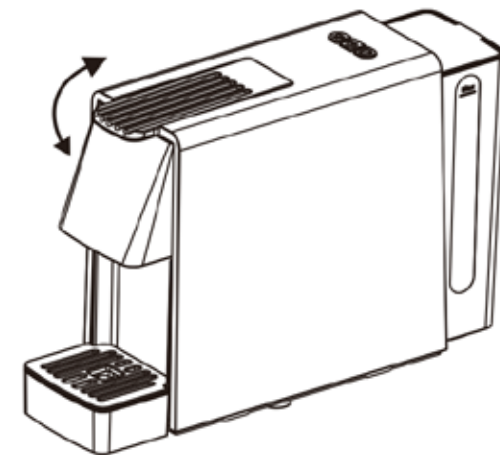
## 1. Inserting the Coffee Pod

\*Lift the handle and place a coffee pod into the holder.

\*Securing the Pod



## 2. Lower the handle to lock the pod in place.



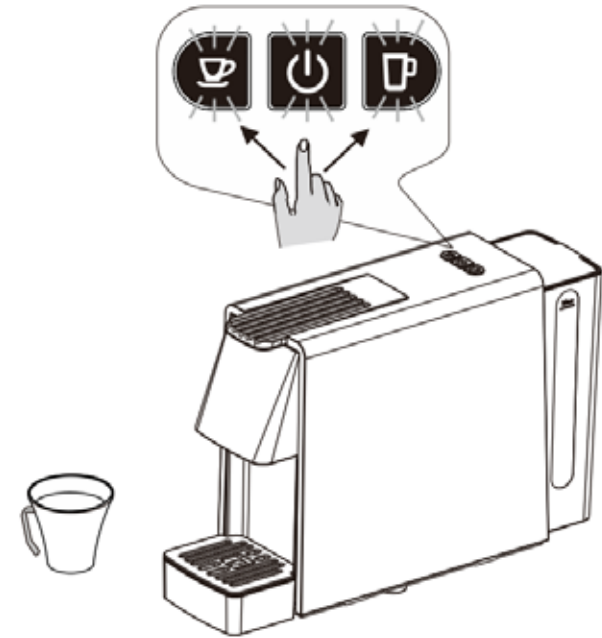


### 3. Brewing Your Coffee

\*Position a cup on the tray.

\*Choose your desired coffee volume by pressing the corresponding button.

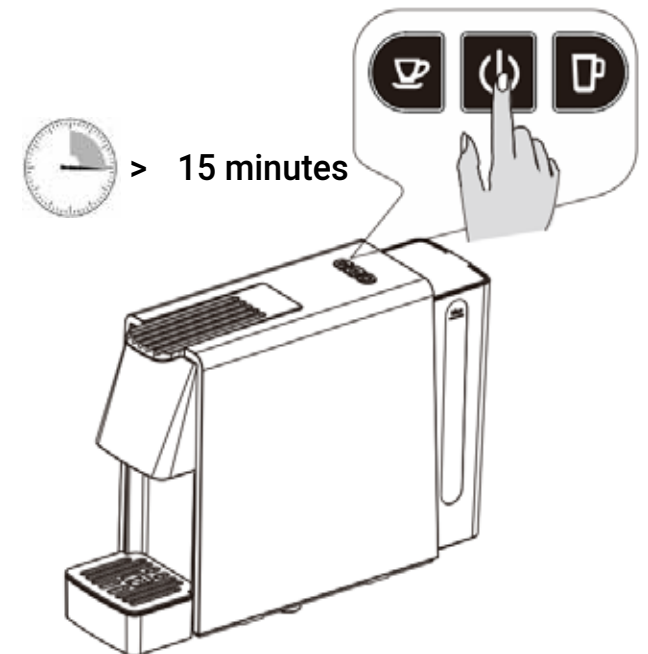
**Note:** Upon pressing, the button's light will flash momentarily as the machine heats up, signaling the beginning of the brewing process. This pre-brewing indicator is standard.



### Energy-saving Mode

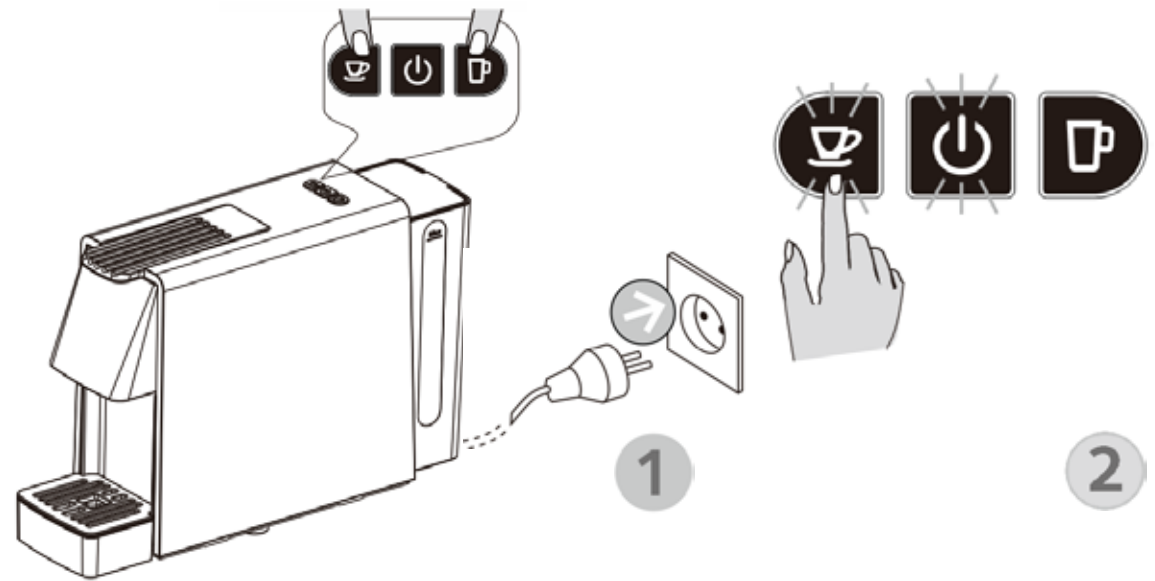
#### Automatic Energy-saving Feature

1. The machine is equipped with an automatic energy-saving function upon manufacture.
2. If left inactive for 15 minutes, the machine will power down, and all lights will extinguish.
3. To restart the machine from energy-saving mode, press the On-Off button.



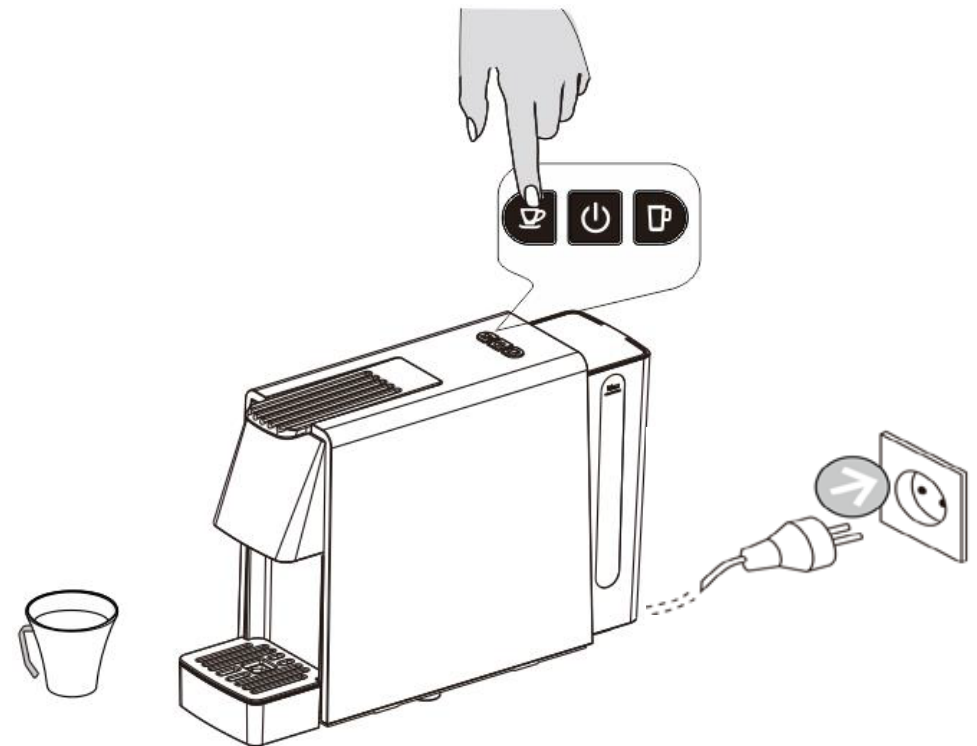
## Setting Energy-saving Preferences

1. To deactivate energy-saving mode, press and hold both cup size buttons while powering on the machine.
2. The On-Off light will illuminate.
3. Press the small cup button to turn off its light, thereby exiting energy-saving mode.



## Descaling Mode Function

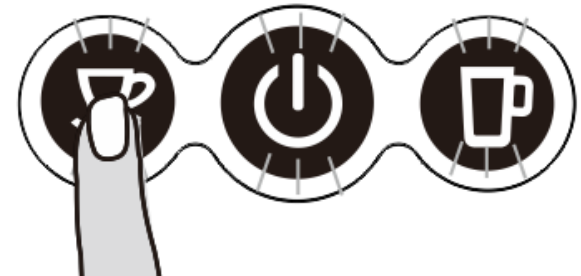
1. Position a container beneath the machine's water outlet.
2. Fill the water tank with a suitable quantity of descaling solution.
3. Simultaneously press and hold the small cup button while turning on the machine to initiate the descaling mode.



# Coffee Volume Settings

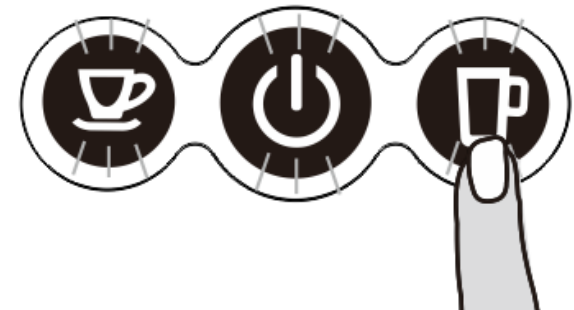
## Small-Cup Volume Setting

1. Place a cup under the water outlet.
2. While the machine is in standby mode, press and hold the small-cup button. The machine will start and commence brewing. Release the button once the desired volume is reached. The minimum setting is 10 seconds, and the maximum is 90 seconds.



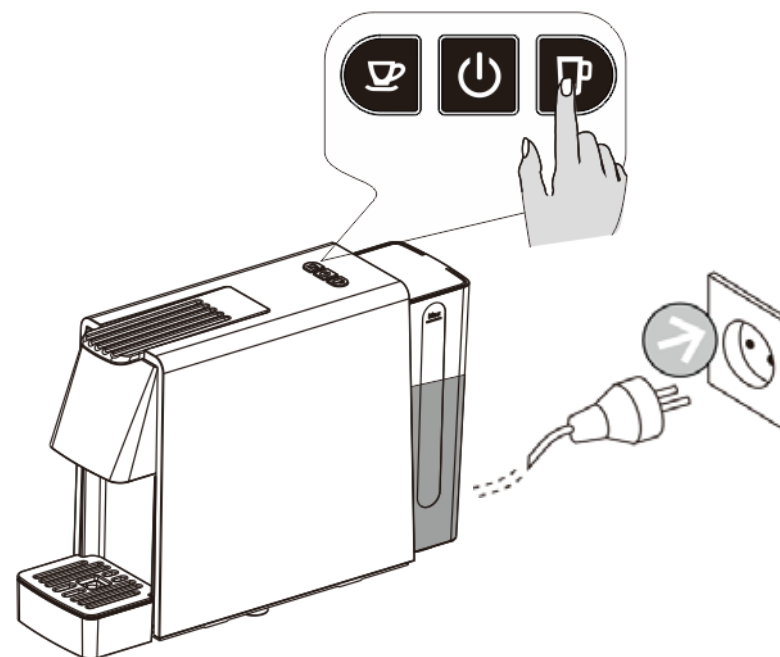
## Large-Cup Volume Setting

Follow the same procedure as above, using the large-cup button. The minimum setting is 15 seconds, and the maximum is 90 seconds.



## Restore Factory Settings

To revert to the original factory settings, press and hold the large-cup button while connecting the machine to power. The indicator light will flash twice, confirming the reset.

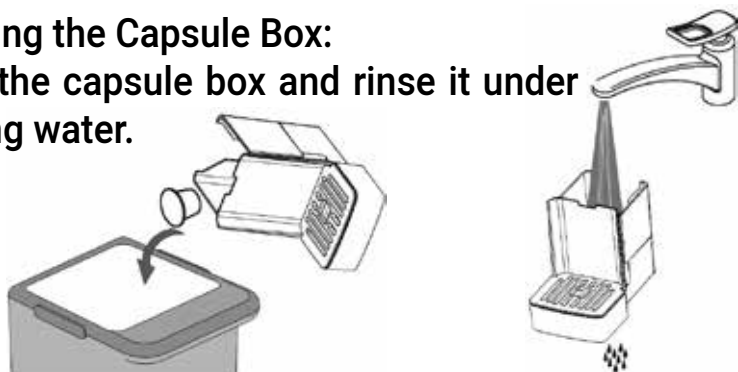


## Cleaning

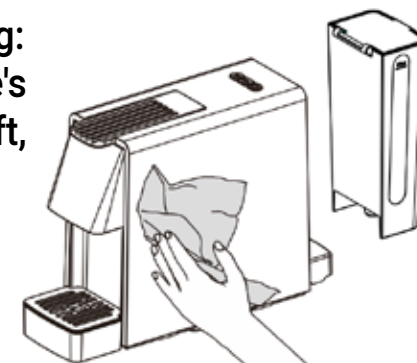
### Important Reminders:

- \*Never submerge the coffee maker in water.
- \*Disconnect the power before cleaning.

**Cleaning the Capsule Box:**  
Open the capsule box and rinse it under running water.



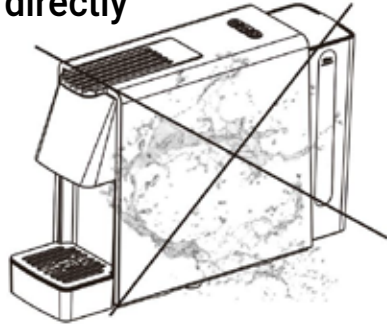
**Complete Machine Cleaning:**  
Carefully clean the machine's external surfaces with a soft, damp cloth.



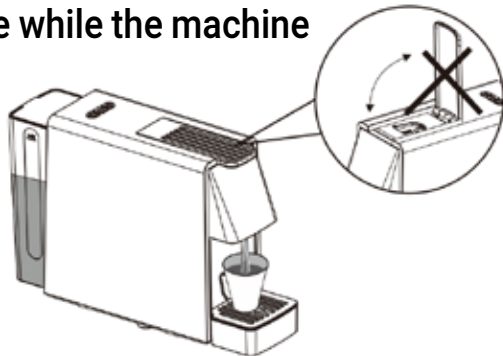
## Additional Precautions



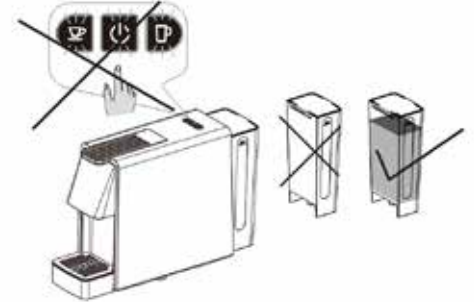
**Avoid pouring water directly onto the machine.**



**Do not open the handle while the machine is operating.**



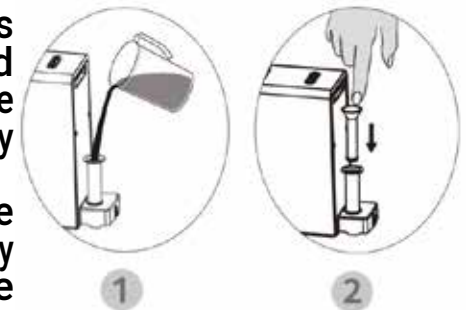
**Before the First Use:  
Ensure the machine  
contains at least 200ml  
of clean water.**



**If the Machine is Not Dispensing Water:**

**\*If the coffee maker has been stored or unused for a prolonged period, the internal water pump may be air-locked.**

**\*To resolve this, use the manual air pump accessory to prime the machine with water.**



## Common Problems

Fault Phenomenon	Possible Causes	Solutions
Indicator Lamp is Off	The power supply may be disconnected or the function button has not been pressed.	<ul style="list-style-type: none"><li>*Ensure the power cable is connected properly and the On-Off button is pressed.</li><li>*If the lamp still doesn't light up, the power supply should be checked to match the machine's requirements.</li><li>*If the issue persists, professional repair is needed.</li></ul>
Water Leakage or Seepage	Possible leakage from the water tank or the brewing cup.	<ul style="list-style-type: none"><li>*Verify that the water tank is correctly installed and not damaged.</li><li>*Ensure the brewing cup is the right fit for the coffee capsule being used.</li></ul>
No Heating	The machine is not receiving power.	<ul style="list-style-type: none"><li>*Check that the power socket is properly connected.</li><li>*If heating does not commence, professional repair may be required.</li></ul>
Water Flows Out from the Bottom	Excessive water in the drain pan.	<ul style="list-style-type: none"><li>*Empty and clean the drain pan.</li><li>*If leakage continues, professional maintenance is advised.</li></ul>
Coffee Drips Too Slowly or Not at A	The coffee capsule may not be the correct fit.	<ul style="list-style-type: none"><li>*Confirm that the coffee capsule fits the brewing cup properly.</li><li>*If the brewing cup is obstructed, clean it as soon as possible.</li></ul>

## Food Hygiene Labeling

Parts Name	Material Type	Executive Standard
Water valve seat/ Water valve seat cover/ Capsule inlet	ABS	GB2016-4806.7 GB2016-4806.6
Water tank valve core/ Air pump	PP	GB2016-4806.7 GB2016-4806.6
Flow limiting plug/ Core inlet head/ Small water pump joint	PA66	GB2016-4806.7 GB2016-4806.6
Core bracket/ Brewing cup/ Brewing cup holder	PBT	GB2016-4806.7 GB2016-4806.6
Water tank valve O-ring/ Water valve seat gasket/ Boiler water pipe O-ring/ Silicone pipe/ Coffee ring filter/ Front sealing ring/ Back sealing ring of filter element/ Sealing ring of brewing cup	Silica Gel	GB2016-4806.11
Water tank valve spring/ Brewing cup seat baffle/ Spring/ Steam pipe/ Steam pipe nozzle/ Grinding head/ Grinding plate	SUS304	GB2016-4806.9
Coffee spout/ Coffee spout cover/ Brewing door	POM	GB2016-4806.7 GB2016-4806.6

## Product Safety Indicators

Lastly, the coffee maker comes with a set of safety indicators that are essential for its operation:

Model	LPCMAESBK
Voltage	220V
Power	1450W
Frequency	50Hz

Note: It's important to use the coffee maker within the prescribed electrical conditions to ensure safety and proper function.

## Environmental Considerations



This coffee maker has an environmentally friendly service life label, indicating the duration it can be used safely and efficiently under normal operating conditions. This is in line with the regulations for electrical and electronic products sold in China, which require an environmentally friendly expiration date label. The label's validity depends on usage frequency, environmental temperature, and other relevant factors.



## Warranty

Products that you buy directly from our **LePresso** website or shop come with a 24-month warranty.

The 24-month warranty applies to products purchased directly from our **LePresso** website or store. If **LePresso** products are bought from any of our verified retailers, then the product is eligible for only a 12-month warranty. To extend your product's warranty, visit our website

**<https://www.lepresso.com/warranty>** and fill in your details in the provided form along with an uploaded picture of the product to process your request. Once approved, you will receive a confirmation email of the extended product warranty. Upload the required information within 48 hours of purchase to be eligible for a 24-month warranty period.

For more info, please check:

**<https://www.lepresso.com/warrant>**

## Contact Us

If you have any questions or concerns about our Shipping and Returns Policy, please contact us at: **[info@lepresso.com](mailto:info@lepresso.com)**

Website: **<https://www.lepresso.com/>**

Instagram: **[lepresso\\_official](#)**