

PORODO
LIFESTYLE



Porodo Lifestyle
6-Blade Portable Blender

SKU: PD-LFST159-BKOG

Table of Contents

Precautions	2
Before First Use	3
Usage Instructions	3
Food Contact Material Information	4
Product Overview	5
Specifications	6
Usage Steps	6
Washing Instruction	7
Correct Disposal	7
Troubleshooting	8
Hazardous Substances Information	9
Warranty	10
Contact Us	10

Thank you for your purchase. Before using the product, please read this User Manual carefully to ensure proper use and keep it for future reference.

Precautions

To avoid misuse, please read the instructions carefully.

- 1.** This product is powered by a lithium battery. A certified USB charger should be used as the charger for this product. Please use the USB power cord provided by our company to fully charge the product before use. The recommended charging time is 4 hours or more. Additionally, make sure to clean and dry all parts that come into contact with food before using the product.
- 2.** Only turn on the product after it is properly closed, and once the mixing knife has stopped moving completely.
- 3.** When cleaning the product, ensure that the power switch is off and the charging port is plugged. Do not wash the motor or use water in any way to prevent water from entering the unit and damaging the electronic components.
- 4.** Avoid squeezing juice for more than 5 times consecutively to prevent excessive strain on the electronic components, which could cause overheating and reduce the product's lifespan.
- 5.** This product is equipped with an overload protection function. If the knife becomes jammed due to large food materials, the product will stop working and the red indicator light will remain on for 5 seconds. After the obstruction is cleared, the product can be restarted.
- 6.** All parts of the product should not be sterilized with hot water or placed in a microwave oven with temperatures exceeding 60°C to prevent damage.
- 7.** Do not place the main components of the product in a dishwasher or cleaning equipment. Additionally, make sure no water enters the main unit.
- 8.** Avoid using steel wool, abrasive cleaners, or corrosive liquids to clean the product.
- 9.** This product is a juice machine and is not suitable for mincing meat, grinding nuts, or processing bean products.
- 10.** If no one else is available to take care of it, always disconnect the power

supply of the mixer before assembly, disassembly, or cleaning. Additionally, do not allow children to use the mixer without proper supervision.

11. Exercise caution when removing the mixing knife, and always clean the main machine and mixing cup separately.

12. Ensure that the power switch is turned off and the product is unplugged before replacing accessories or contacting any moving parts.

13. This product is equipped with a built-in lithium battery. Do not place the product in a high-temperature environment, and avoid discarding it as regular waste. If the product is not used for a long period, charge the battery at least once every three months to prevent damage.

14. Before discarding the appliance, remove the battery using appropriate tools to avoid damaging the outer casing. Once the battery is removed, place it in a dedicated battery waste bin and handle it according to local disposal regulations.

15. Always ensure the appliance is powered off when removing the battery.

16. The battery should be disposed of safely and according to the appropriate disposal guidelines.

17. This product is for home use only. If the product is used improperly, for professional or semi-professional purposes, or if operated in any manner not in accordance with the instructions provided in the user manual, the warranty will become void. In such cases, the company will not be held responsible for any resulting damages or losses.

Care and Storage

Before using the product for the first time, ensure that it is fully charged and that all components in contact with food are thoroughly cleaned. The product features dual safety mechanisms and will only enter standby mode once the cup body is securely aligned with the corresponding position on the main unit.

Usage Instructions

1. Read the previous notes.

2. Wash the fruit and cut it into small pieces (1.5 x 1.5 cm). Be sure to remove any cores, hard materials, or thick skin.
 3. Place about %60 of the maximum capacity of the cup with fruit, then add water up to the maximum fill line.
 4. Rotate the main engine to fit into the cup, which will be indicated by the PP symbol on the screen, confirming the proper alignment.
- Note:** The fruit and water should not exceed the maximum fill line to prevent spilling.
5. After double-clicking to start the product, turn the cup upside down (as shown in Figure 4). The default operating time is 40 seconds. While the product is operating, gently shake it for the best mixing results.
 6. In standby mode, you can click to check the battery status.
 7. After use, the product will automatically enter standby mode. You can open the lid and drink directly or insert the straw.
 8. If the product cannot be started and the indicator light flashes red, connect the USB cable to the charging port (compatible with various 5V power supplies). When fully charged, the indicator light will turn steady blue.
- Note:** This product can be charged by connecting various smartphone chargers with its own USB charging cable or by using a charging bank. The product charges fully within about 4 hours and can make approximately 8 cups of fresh juice.

Food Contact Material Information

This product is safe for contact with food. Please use this product according to the provided instructions. It complies with the edible contact materials and components standard 2016-4806.1 and meets the relevant national food safety regulations. Specific details are as follows:

Part Name	Food Contact Material	Standard
Motor support	ABS	GB 4806.7-2023
Stainless steel cup/ mixing blade	SUS304	GB 4806.9-2023
Stirring blade shaft	SUS303	GB 4806.9-2023
Main engine seal ring	Silicone rubber	GB 4806.11-2016
Oil seal	fluororubber	GB 4806.11-2016

Product Overview

1. Button

2. Charging port silicone

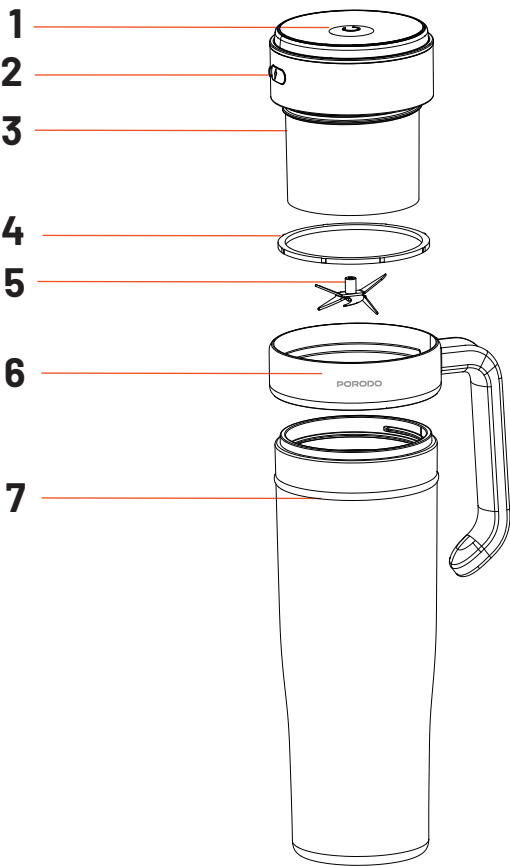
3. Main engine

4. Main engine seal ring

5. Mixing blade

6. handle

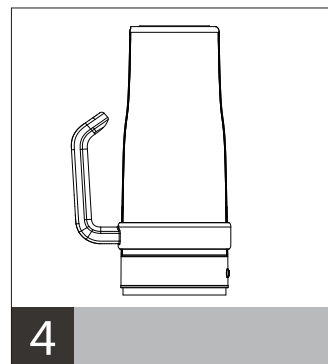
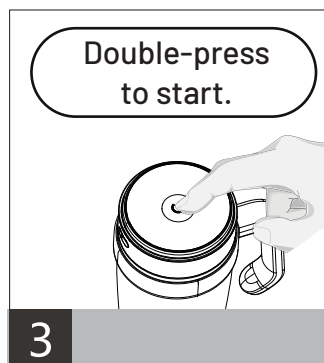
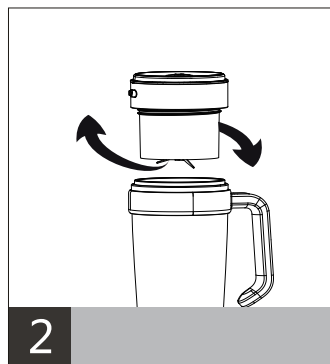
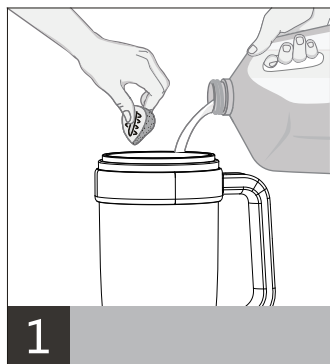
7. Stainless steel cup



Specifications

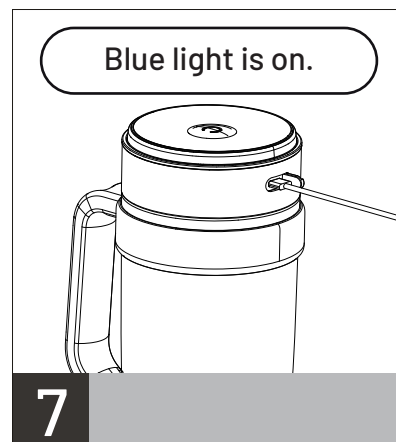
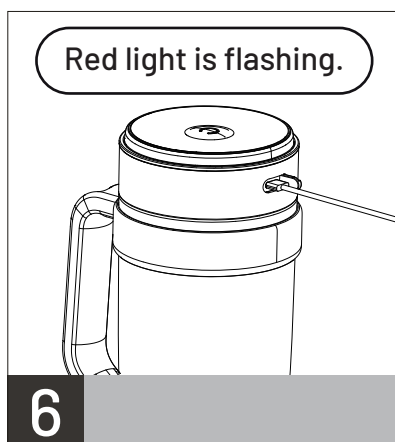
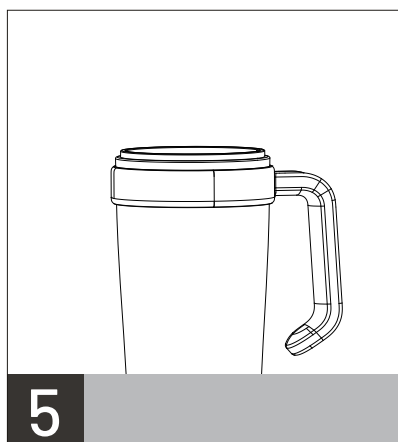
Input	5V/1A
Rated Power	70W
Rated Voltage	DC 7.4V
Battery Capacity	1500mAhx2
Material	304 Food-Grade Stainless Steel
Bottle Capacity	900mL (Straight Drink), 500mL (Juice)
Charging Interface	USB-C
Motor Speed	18000RPM
Product Size	137 x 97x261mm
Model Number	LFS159

Usage Steps



1. Add the ingredients into the container.
2. Install the main engine securely into the unit.
3. Power on the device to begin operation.

4. Invert the product to ensure it functions properly.



5. Open the cover to drink.

6. The device needs to be charged.

7. The device is fully charged.

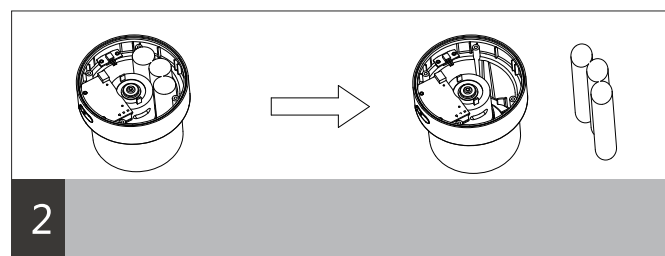
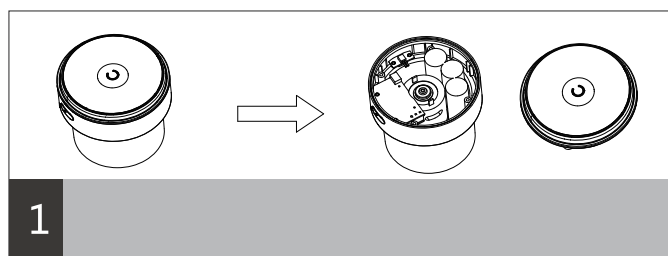
Washing Instruction

Note: This product is not dishwasher safe.



Correct Disposal

Please pay attention to environmental protection.



1. Once the appliance is powered off, carefully open the blender. Take extra caution around the blade to prevent injury. Always wear protective gloves during the process.

2. Remove the battery from the appliance and dispose of it properly by placing it in a designated waste bin for personal disposal.



This product must not be disposed of as unsorted household waste. It is important to separate such waste for proper treatment and recycling, in compliance with local waste management regulations.




Troubleshooting

Problem	Possible Cause	Solution
The machine fails to stir or stop while the red light flashes 5 times.	Battery is low.	Charge the appliance on time.
The appliance stops operating with the red light flashing for 5 seconds.	Motor is locked.	Remove any food debris from the blade and restart.
The machine cannot be powered on, and the red light blinks 10 times.	The appliance has been used more than 5 times within 20 minutes.	Allow 15 minutes of rest before using again.
Water or gas leakage detected.	The silicone assembly is not properly in place, or the cup body is not securely tightened.	Reinstall the silicone ring and securely tighten the main engine.

Hazardous Substances Information

To protect the environment, after this product or its parts are disposed of, you, as the consumer, are responsible for separating it from domestic waste. Please send it to a qualified recycling center in accordance with national regulations for classification, dismantling, recycling, and other proper processing methods.

Name of Material Content and Substances						
Part Name	Pb	Hg	Cd	Cr(VI)	PBBs	PBDEs
Plastic parts	○	○	○	○	○	○
Hardware	○	○	○	○	○	○
Silica gel	○	○	○	○	○	○
Sticker label	○	○	○	○	○	○
Screws	○	○	○	○	○	○
Circuit board	×	○	×	○	○	○
Motor components	×	○	○	○	○	○
<p>This table is compiled according to the SJ/T11364 specifications.</p> <p>O: Indicates that the content of the hazardous substance in all homogeneous materials of the part is below the limit requirements specified in GB/T 26572.</p> <p>X: Indicates that the content of the hazardous substance in at least one homogeneous material of the part exceeds the specified limit requirements.</p>						
 environmental protection service life	<p>The "environmental protection service life" of this product is 10 years, as determined by the manufacturer based on the design characteristics of the product. This "environmental life" is valid only when the product is used under normal conditions as outlined in the product manual.</p>					

Note: Other components and homogeneous materials within this product that are not listed in the table above do not contain any harmful substances. All components and homogeneous materials containing hazardous substances, as indicated in the table above, comply with the strict requirements of China's RoHS regarding the restriction of hazardous substances.

Warranty

Products that you buy directly from our **Porodo** website or shop come with a 24-month warranty.

When you buy **Porodo** products from any of our approved sellers, you only get a 12-month warranty. If you want to extend this warranty, go to our website at **porodo.net/warranty** and fill out the form with your information. Don't forget to upload a picture of the product too. After we've checked and accepted your request, we'll send you an email to confirm that your product's warranty has been extended.

For more info, please check:

porodo.net/warranty

Contact Us

If you have any questions about this Privacy Policy, please contact us at:

info@porodo.net

Website: **porodo.net**

Service Support: **support@porodo.net**

Instagram: **porodo**