

PORODO
LIFESTYLE



Porodo Lifestyle
Electric Travel Bidet

SKU: PD-LFST144-BK

Table of Contents

Important Safety Instructions	2
Warning	2
Schematic View	3
Instructions for Use	4
Steps for Using the Product	6
Charging Instructions	8
Battery and Storage Guidelines	9
Specifications	9
Disposal	10
Warranty	11
Contact Us	11

Before using the product, please carefully read this User Manual to guarantee correct usage and keep it secure for future reference.

Important Safety Instructions

1. Ensure you read and fully understand all instructions before using the device.
2. Familiarize yourself with the proper method to turn off the product and charge it safely.
3. Follow the maintenance instructions provided in the manual to ensure the longevity and optimal performance of the device.
4. Use the product only with water within the temperature range of 10°C to 50°C to prevent damage or malfunction.
5. The bidet assembly contains small parts that may pose a choking risk, especially to young children.

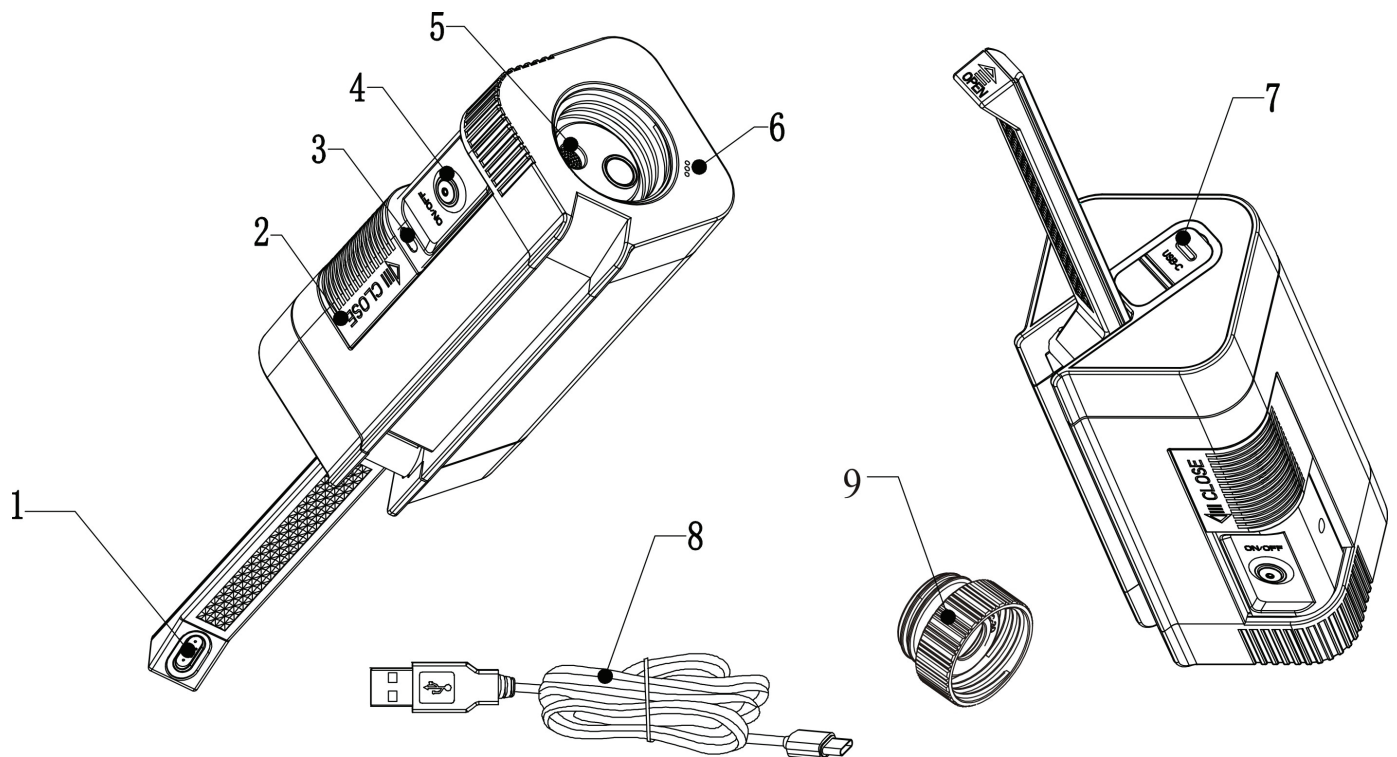
Warning

To Reduce the Risk of Injury:

1. Never leave the appliance unattended while in use. Always switch the power off when not in use.
2. Use only as described in this manual with the manufacturer's recommended attachments and replacement parts.
3. Avoid using sea water or water from muddy, dirty conditions, such as that from pools or rivers, in the bidet.
4. Do not block the nozzle while the device is in operation.
5. Ensure the socket cover is tightly closed and avoid immersing the device in water to prevent damage.
6. Supervise children when operating the device, ensuring they are given proper instructions and attention.
7. Recharge the battery using the specified voltage range (DC 5V 0.5A-1A) as required.

- 8.** Do not use a damaged power cord or plug; only use the appropriate voltage as indicated on the rating plate. Using incorrect voltage may damage the battery and present a risk of injury.
 - 9.** Before use, ensure the device is in good condition with no broken or worn parts, and that all screws are properly tightened.
 - 10.** Keep the device away from heat sources such as heating devices or open flames.
 - 11.** Avoid freezing the device, as freezing will damage the motor and cord.
 - 12.** Do not disassemble the device as this will void the warranty.
- Caution:** Do not charge the device overnight or overcharge it, as this may damage the battery and reduce its lifespan.

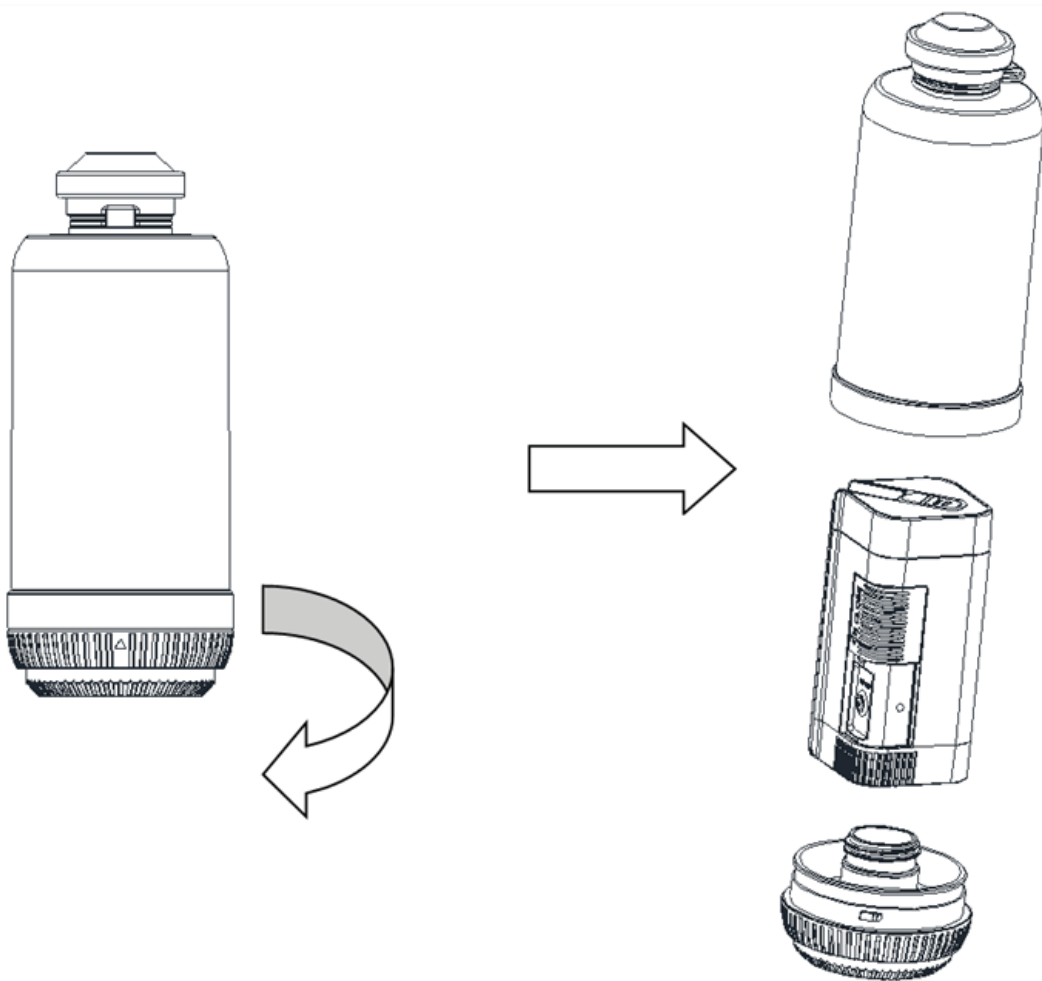
Schematic View



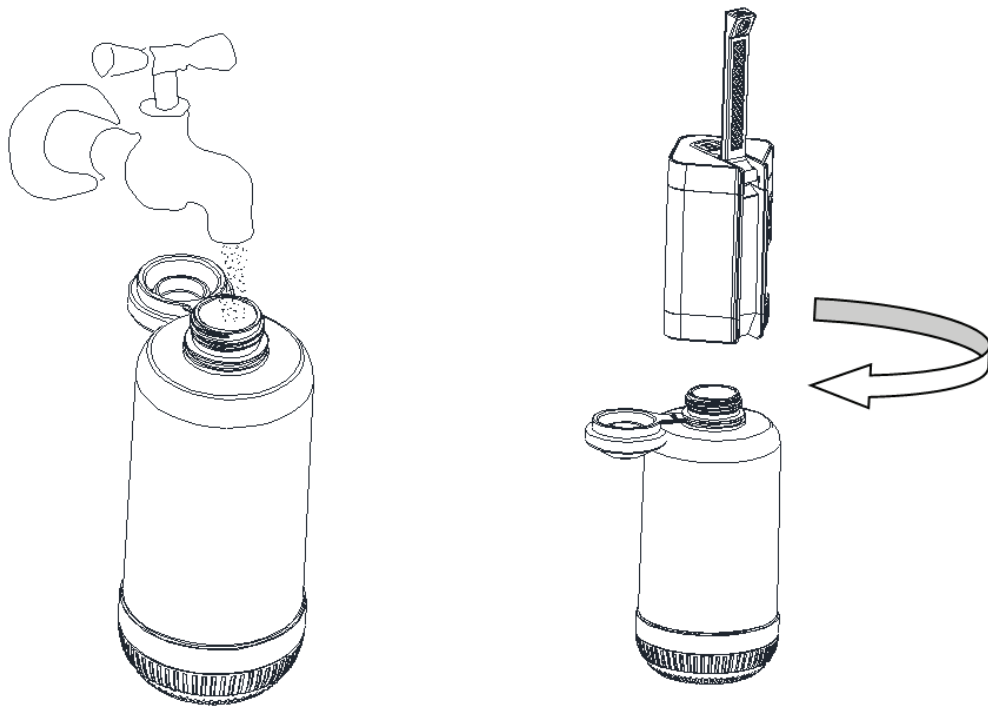
- | | |
|-----------------------------------|---------------------------------|
| 1. Nozzle | 6. Air Valve |
| 2. Sliding Door for Button | 7. USB-C Socket |
| 3. LED Indicator | 8. USB-C Cable |
| 4. On/Off Button | 9. Bottle Thread Adapter |
| 5. Inlet Filter | |

Instructions for Use

1. Unbox the product and carefully remove it from the packaging.
2. Rotate the bottom lid of the bottle counterclockwise to remove it.
Note: The bottom cover will be easier to remove after opening the silicone bottle lid first.
3. Remove the main device from the bottle.
4. Reattach the bottom cover by aligning it properly, and rotate it clockwise to securely lock it in place.



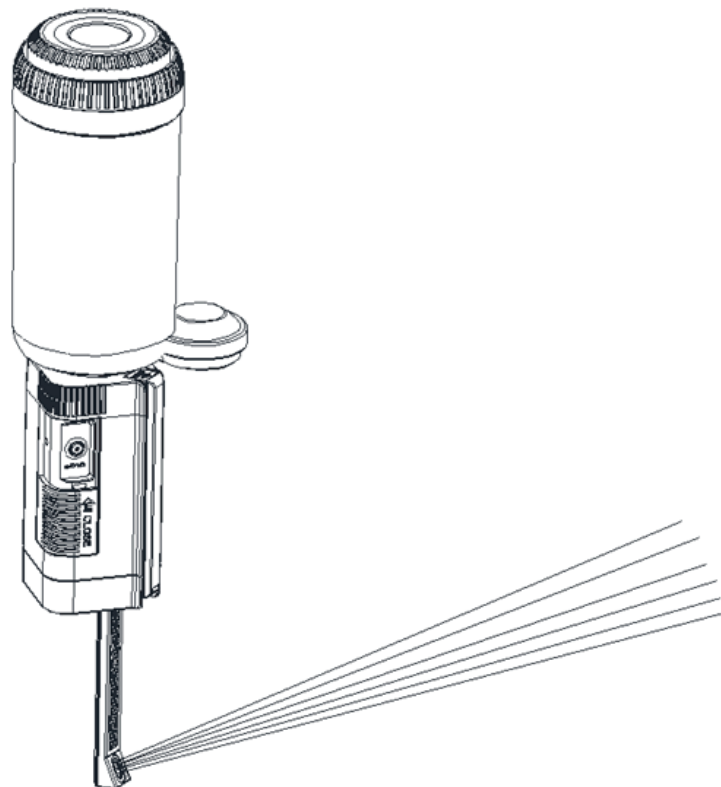
5. Fill the bottle with clean water. Attach the main device to the bottle by rotating it clockwise and then unfold the spout.
Note: This product can also be used with bottles that fit the thread of the device.



6. Invert the bottle. Press the on/off switch to activate the lower pressure setting (as indicated by the arrow), press again for a higher pressure setting, and touch again to turn the device off.

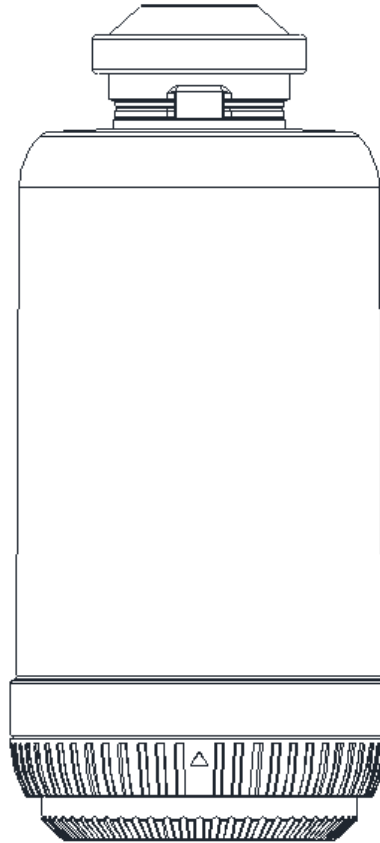
Note: If no water is dispensed during use, clean the nozzle and inlet filter.

7. Do not block the outlet steel mesh when spraying; doing so may cause excessive internal pressure, leading to potential damage and water leakage.



8. After cleaning, insert the main device back into the bottle and securely close the silicone bottle lid.

Note: Ensure the bottle is thoroughly dry before storing the device. Any residual water in the bottle may generate water vapor, which could enter the main device and cause a short circuit in the PCBA.



Steps for Using the Product

1. Ensure you use an empty water bottle with the specified opening size for compatibility.

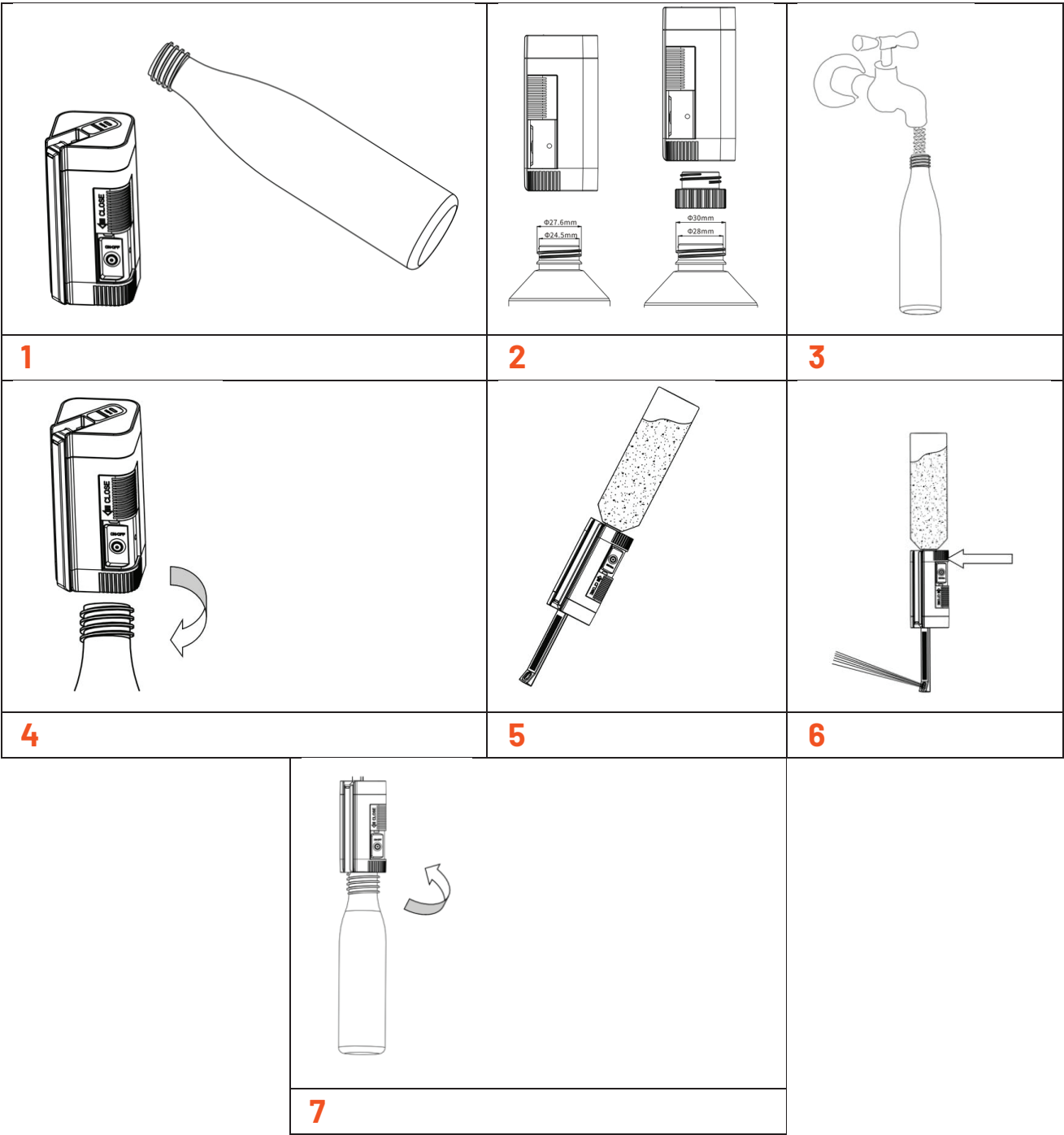
Note: The opening size of your bottle should match the dimensions provided.

2. For bottles with non-standard thread sizes, utilize the provided adapter to ensure a proper fit.

3. Begin by filling the bottle with clean water.

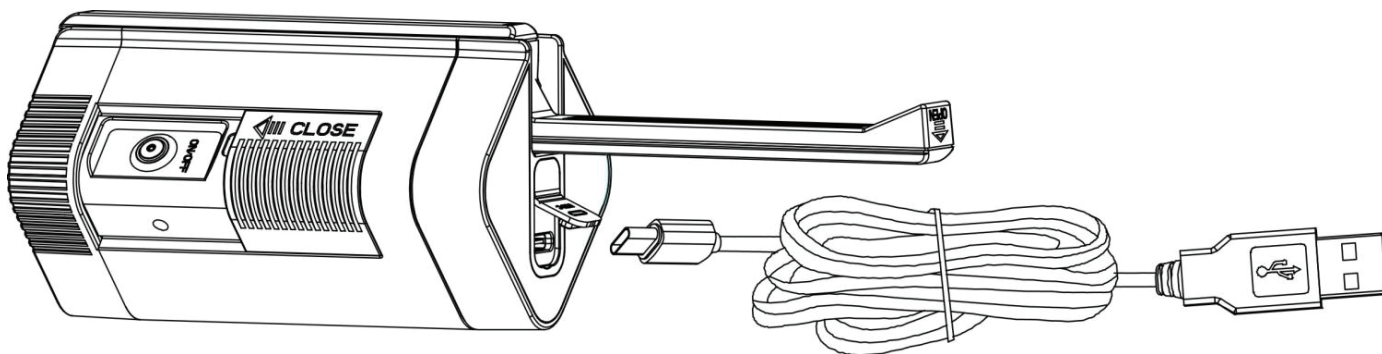
4. Securely attach the main device to the bottle by turning it clockwise until it is firmly in place.

- 5. Turn the bottle upside down, extend the spout, and align it properly for the intended cleaning application.
 - 6. Activate the device by pressing the on/off switch to start at the lower pressure setting. Press again to switch to a higher pressure setting. Press once more to turn the device off.
- Maintenance Tip:** If no water is dispensed during use, clean the nozzle and the inlet filter to ensure optimal performance.
- 7. After use, carefully fold the spout back into its designated slot. To remove the bottle from the main device, turn the main device counterclockwise.



Charging Instructions

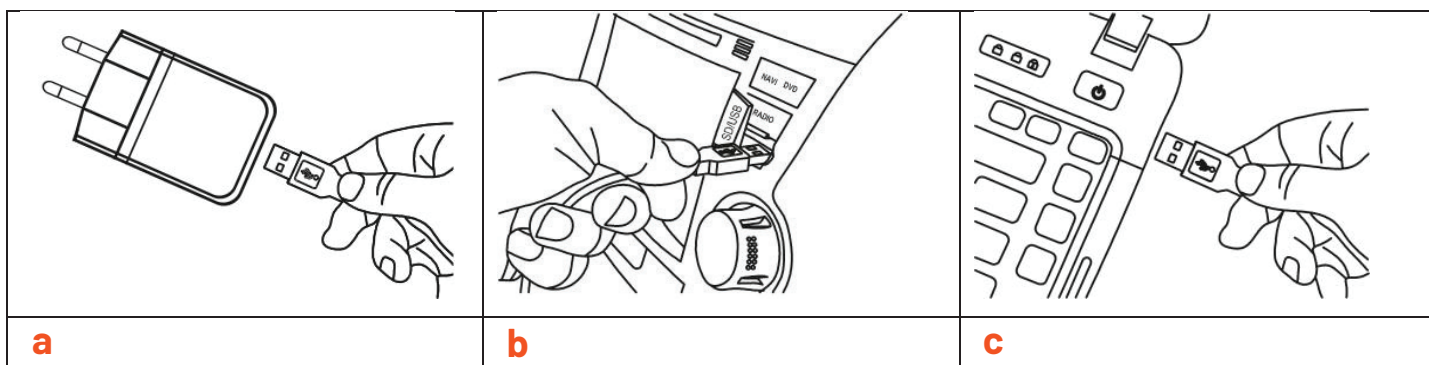
1. Open the socket cover.
2. Plug the USB cable into the device when the battery is low.



3. You can connect the USB charging cable to any of the following:

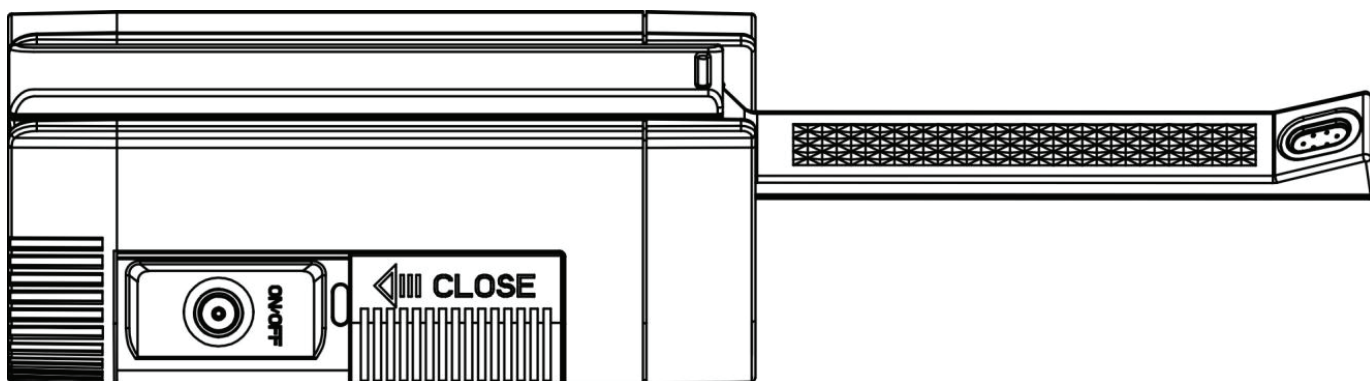
- A. 5V Phone USB charger
- B. Car USB socket
- C. Computer USB socket

Warning: Do not use a charger with an output higher than 5V to charge the device, as it may damage the battery and pose risks of fire and explosion.



LED Indicator Status:

1. Low Battery: The white LED will flash when the battery is low.
2. Charging: The LED will turn red during charging.
3. Fully Charged: The LED will turn white when the device is fully charged.



Battery and Storage Guidelines

1. To prolong the battery life, we recommend charging the Pocket Bidet to 40%-50% (approximately 30 minutes) after each use. Please ensure it is fully charged before using it for the first time.
2. To maintain optimal battery health, recharge the Pocket Bidet at least every three months. If left uncharged for extended periods, the battery may become depleted.
3. Only charge the Pocket Bidet using the recommended output specifications (Output: DC 5V / 0.5-1A). Exceeding these limits can damage the battery.
4. Store the device away from high temperatures, flammable materials, and hazardous substances. Ensure charging occurs at room temperature, and avoid charging in hot environments.
5. After each use, wipe the Pocket Bidet dry with a cloth before storing it to maintain cleanliness and prevent moisture buildup.

Specifications

Rated Voltage	DC 3.7V
Battery Capacity	1100mAh

Working Time	Up to 85 Minutes
Bottle Capacity	400mL
Charging Interface	USB-C
Product Size	49 x 103 x 49mm
Model Number	LFS144

Disposal

This product must not be disposed of as unsorted household waste. It is important to separate such waste for proper treatment and recycling, in compliance with local waste management regulations.



Warranty

Products that you buy directly from our **Porodo** website or shop come with a 24-month warranty.

When you buy **Porodo** products from any of our approved sellers, you only get a 12-month warranty. If you want to extend this warranty, go to our website at **porodo.net/warranty** and fill out the form with your information. Don't forget to upload a picture of the product too. After we've checked and accepted your request, we'll send you an email to confirm that your product's warranty has been extended.

For more info, please check:
porodo.net/warranty

Contact Us

If you have any questions about this Privacy Policy, please contact us at:
info@porodo.net

Website: **porodo.net**

Service Support: **support@porodo.net**

Instagram: **porodo**