

**PORODO**  
**LIFESTYLE**



**Porodo Lifestyle**  
**Handheld Window Cleaner**

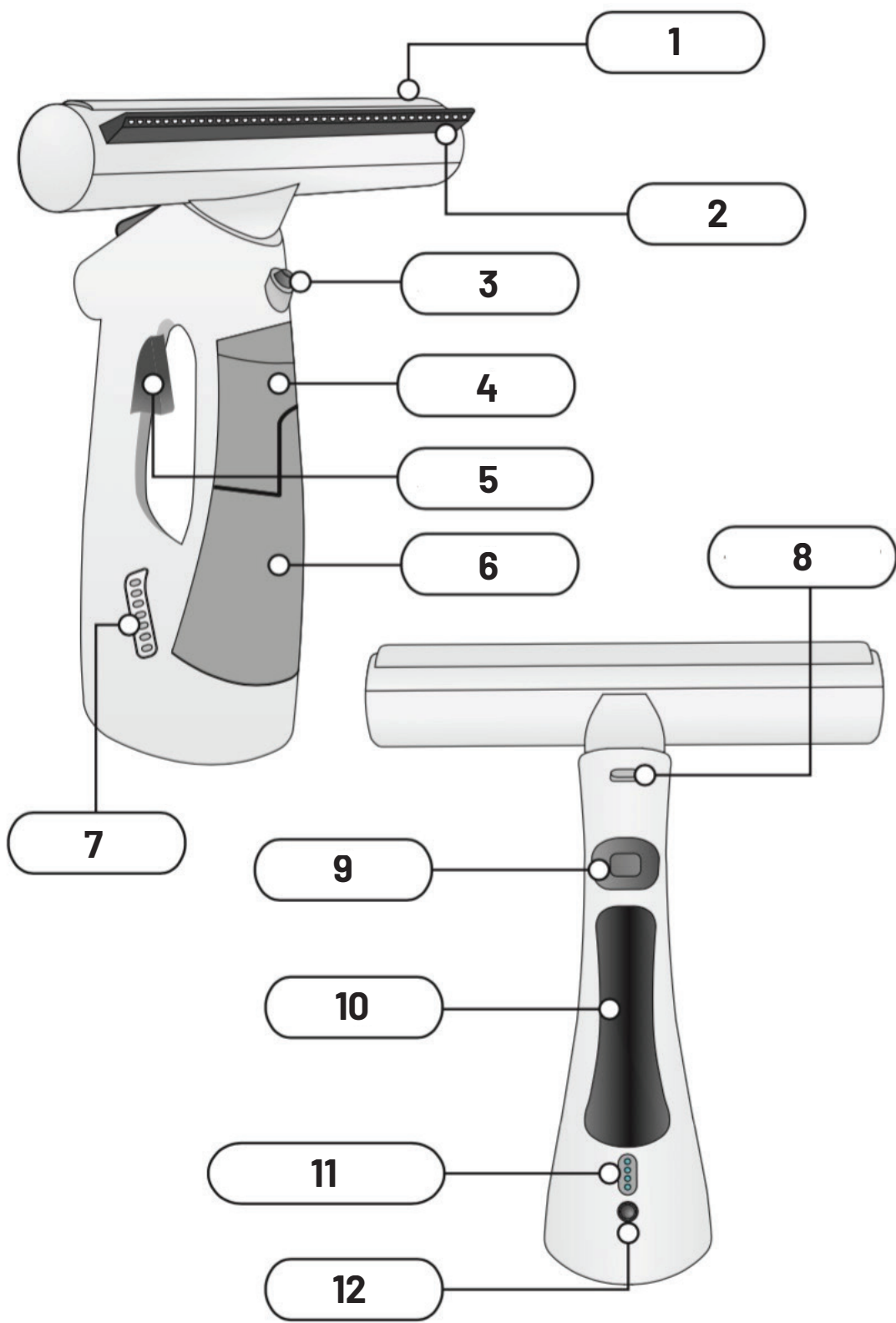
SKU: PD-LFST146-WH

# Table of Contents

Schematic View	2
Safety Regulations	3
Before First Use	5
Charging the Battery	6
Filling the Water Tank	6
Attaching the Cleaning Wipes	7
Instructions for Use	8
After Use	9
Maintenance and Cleaning	9
Specifications	10
Product Disposal	11
Battery Disposal Safety Notes	11
Warranty	12
Contact Us	12

Before using the product, please carefully read this User Manual to guarantee correct usage and keep it secure for future reference.

**Schematic View**



1. Wipe Attachment Area
2. Squeegee
3. Spray
4. Water Collection Tank
5. Trigger
6. Clean Water Tank

7. Air Outlet
8. Squeegee Press-Button
9. Switch
10. Handle
11. Battery Level LED Lights
12. Charger Socket

## Safety Regulations

**Warning:** When using any electrical appliance, always adhere to basic safety precautions. Follow the instructions below to minimize the risk of fire, electric shock, or injury.

1. Carefully read this manual before using the appliance and keep it in a safe place for future reference.
2. Use the appliance solely as described in this manual.
3. Ensure the voltage indicated on the charger matches the local voltage before connecting the device.
4. Always plug the appliance into an earthed socket.
5. Regularly inspect the appliance for any damage. Do not use the device if the power cord, plug, or charger is damaged, or if any part of the appliance has been dropped or compromised. If the power cord is damaged, have it replaced by the retailer or an authorized service center to avoid potential safety risks.
6. Never attempt to repair the appliance yourself.
7. This appliance is not suitable for children or individuals with reduced physical, sensory, or mental capabilities, or those lacking experience and knowledge, unless supervised by someone responsible for their safety. Close supervision is necessary when the appliance is used near children, pets, or plants.
8. Keep children away from packaging materials to avoid suffocation risks.
9. Always disconnect the device from the adapter before filling, emptying, or cleaning the appliance.
10. Never pull the power cord to disconnect the charger from the socket. Instead, hold the adapter and gently pull it to disconnect.

- 11.** Do not use the appliance with an extension cord unless it has been inspected and tested by a qualified technician.
- 12.** Avoid placing the power cord under doors or near sharp edges or corners. Ensure that the power cord is not compressed or coiled.
- 13.** Keep the device, charger, and power cord away from flames and hot surfaces.
- 14.** Only use attachments recommended by the manufacturer, particularly those that are supplied with the device.
- 15.** Do not use the appliance in areas where vapors may be present (such as paint thinner, flammable materials, oil-based paint, varnish, flammable liquids, or gases), as they may cause an explosion.
- 16.** Never immerse the device and/or adapter in water or other liquids.
- 17.** Avoid touching the charger with wet hands.
- 18.** Never attempt to handle an electrical device if it has fallen into water or any other liquid. Always ensure the device is unplugged and dry before use.
- 19.** Do not add harsh cleaning materials, caustics, acids, perfumes, oils, or cleaning products not intended for this appliance to the water or water tank. These substances can damage the device or make it unsafe to use. Only use clean, pure water. In areas with hard water, it is recommended to use distilled water to prevent lime scale buildup.
- 20.** Use the vacuum function exclusively for vacuuming liquids that are part of the cleaning process.
- 21.** Only operate the device on a smooth, solid, and flat surface that is capable of withstanding moisture.
- 22.** Ensure that the air exhaust is not blocked during operation to maintain optimal airflow.
- 23.** Always use the original charger supplied with the device to avoid compatibility or safety issues.
- 24.** Exercise extra caution when cleaning windows, ensuring safety and preventing accidental damage.
- 25.** Store the appliance indoors to protect it from environmental factors such as humidity and temperature extremes.
- 26.** Damage caused by improper use of the device on objects, materials, people,

or pets, or by failing to adhere to the instructions in this manual, is not covered by the warranty.

**27.** This appliance is designed solely for domestic use; do not use it for commercial purposes.



**Warning:** Do not add harsh cleaning materials, caustics, acids, scented perfumes, oils, or any cleaning products not intended for this appliance into the water or water tank. These substances can damage the appliance or make it unsafe to use. Only use clean, pure water. In areas with hard water, distilled water is recommended to prevent lime scale buildup.



**Warning:** The vacuum function should only be used to vacuum liquids involved in the cleaning process.



## Before First Use

1. Insert the Suction Strainer as shown in Figure 1 before using the appliance.
2. Remove all packaging materials from the device.
3. If necessary, clean the device with a damp cloth and mild detergent. Please refer to the "Maintenance and Cleaning" section for further details.
4. Inspect the device for any damage before each use. Do not use the device if the power cord or adapter is damaged, or if it is not functioning properly.



Figure 1



Figure 2



Figure 3

## Charging the Battery

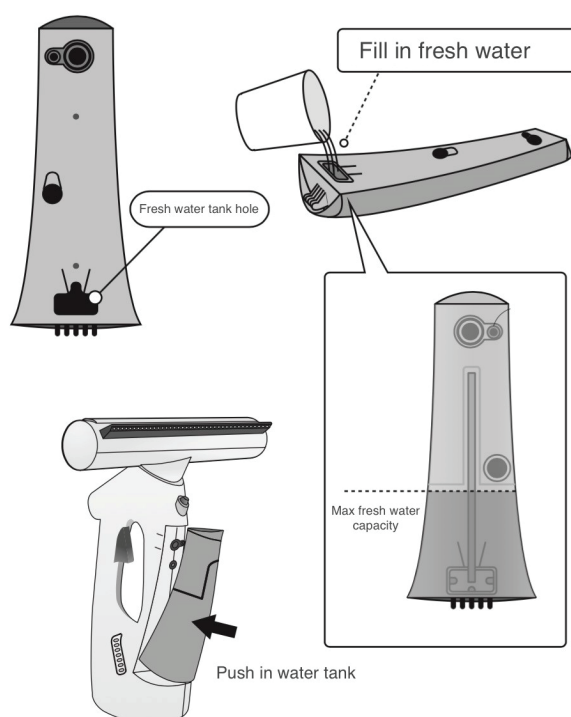
Connect the charger to the device via the charger socket (12) before plugging the adapter into the power supply. Ensure the power supply voltage on the adapter matches the local voltage. The blue indicator light on the charger (11) will illuminate, signaling that the device is charging. Once the battery is fully charged, four LED lights will turn on. The battery typically takes approximately 2 hours to reach a full charge.

**Note:** We recommend unplugging the charger once the green light illuminates to prevent overcharging.

**Note:** Always ensure the adapter is fully connected and the battery is fully charged before using the device.

## Filling the Water Tank

Before filling the water tank, ensure that the device is turned off and unplugged from the charger. Gently pull out the water tank and remove the cap. Fill the water tank (6) with clean, fresh water by slightly tilting the device forward to prevent spillage. Once the water tank is nearly full, securely replace the cap to seal the tank properly.



**Note:** Always ensure that the appliance is disconnected from the charger before filling the water tank.

**Note:** Avoid adding harsh cleaning materials, caustics, acids, scented perfumes, oils, or any cleaning products not specifically intended for this appliance to the water or water tank. These substances may damage the unit or render it unsafe to use. Only use clean, pure water. In areas with hard water, it is recommended to use distilled water to prevent the buildup of lime scale deposits.

## **Attaching the Cleaning Wipes**

- 1.** The cleaning wipes are designed to attach to the wipe attachment area (1) using Velcro.
- 2.** Position the selected wipe evenly across the entire length of the attachment area, then press the surface firmly to secure the wipe in place, as shown in Figure 1.
- 3.** To remove the wipe, simply tear it off as shown in Figure 2.
- 4.** Emery wipes are ideal for removing tough stains and grease from surfaces, while microfiber wipes provide a shiny, streak-free finish on cleaned or lightly soiled surfaces.
- 5.** For optimal performance, replace the wipes regularly based on their level of cleanliness. The wipes are machine washable at 40°C. Do not place them in the dryer.

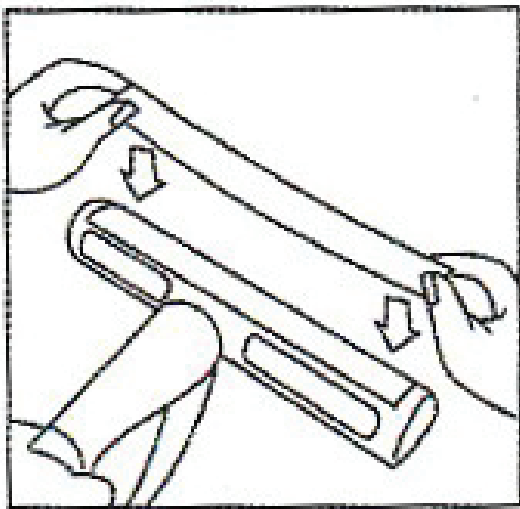


Figure 1

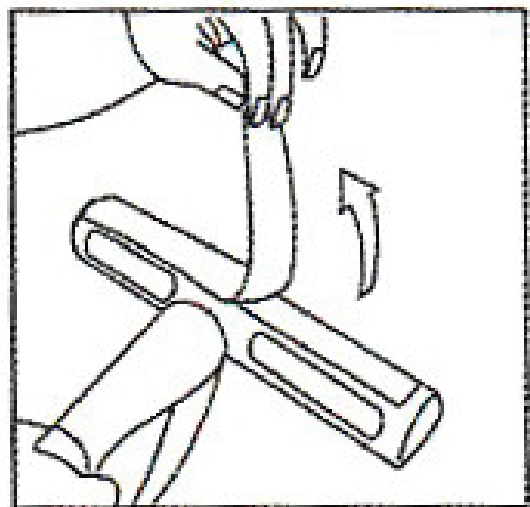


Figure 2



## Instructions for Use

**Spray:** Hold the unit by the handle and press the water spray trigger (5), as shown in Figure 3. Ensure the spray (3) is directed toward the area to be cleaned, and evenly cover the surface with water.

**Clean:** Next, turn the device and use one of the wipes attached to the unit to clean the surface. If necessary, a mild glass cleaner can be sprayed onto the window, or a few drops of vinegar can be added to the water in the water tank for enhanced cleaning.

**Vacuum:** Once cleaning is complete, turn the device again and activate the vacuum function by pressing the vacuum switch (9), as shown in Figure 4. Keep the device in a horizontal position and gently move the squeegee (2) over the surface in a top-to-bottom motion to vacuum up excess water and dirt.

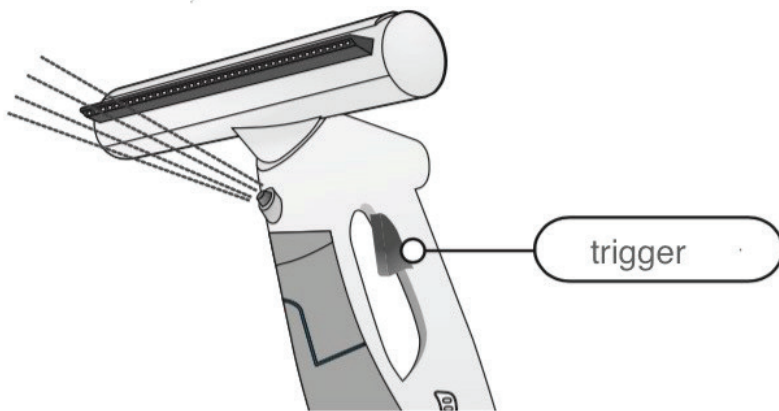


Figure 3

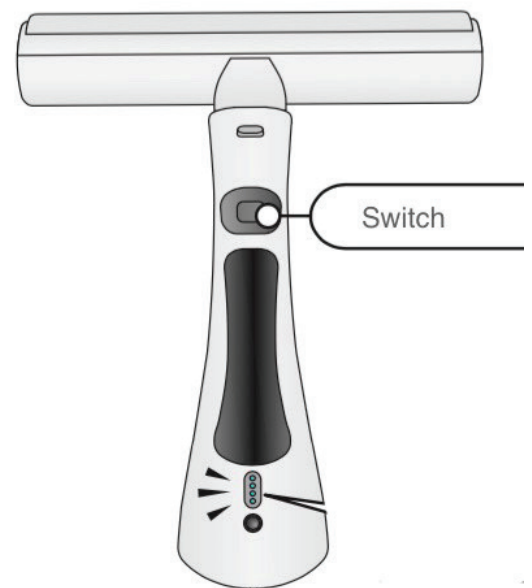


Figure 4

**Warning:** Do not direct the spray towards your eyes or to surfaces containing electronic components, such as plugs, switches, cables, stereo equipment, computer screens, or household appliances.

**Warning:** Use the vacuum function exclusively to vacuum liquids that are part of the cleaning process.

**Tip:** When using the emery wipe, there is no need for detergent. However, for heavy dirt and grease, adding a few drops of vinegar to the water can help with degreasing and cleaning your windows. This is an environmentally friendly and cost-effective solution.

## After Use

- 1.** Turn off the vacuum function by pressing the vacuum switch (9).
- 2.** Wait for approximately half a minute before lifting the water tank cap. Remove the filter and empty the water tank (4) by turning the device upside down over the sink.
- 3.** Carefully wash the filter before reinserting it into the unit. The water collected by the vacuum cleaner is recycled through this filter, so it is essential to clean it after each use to ensure optimal performance.

## Maintenance and Cleaning

### **Note:**

- a.** Always switch off the device and unplug it from the charger before cleaning.
- b.** Never immerse the device or the power cord in water or any other liquids.

### **1. Cleaning the Device**

#### **1.1** Turn off the device.

**1.2** Lift the water tank cap, remove the filter, and empty the water tank by turning the device upside down over the sink.

**1.3** Clean the device and its accessories using a damp cloth and mild detergent, then allow them to dry completely.

**1.4** Wash the filter thoroughly before reinserting it into the unit. The water collected by the vacuum cleaner is recycled through this filter, so it is essential to clean it after every use.

**Note:** Never use abrasive cleaners, bleach, or steel wool to clean the device, as these may damage the material.

## 2. Rinsing the Water Tank

To clean the water tank, fill it with water, close the lid, and shake the unit vigorously. This process will dislodge any lime scale deposits that have accumulated at the bottom of the tank. Pour out the water by holding the cleaner upside down.

## 3. Lime-Scale Removal

To extend the life of your device, it is recommended to descale it every six months. Turn off the device and unplug it from the socket. Fill the tank with 130ml of hot water at 50°C, then add one or two descaling tablets. After 30 minutes, pour out the water as described above.

## 4. Storage

Ensure the device and its attachments are completely clean and dry before storing the unit.

# Specifications

Rated Voltage	220-240V
Rated Frequency	50/60Hz
Rated Power	9W
Suction Power	1kPa
Battery Capacity	1500mAh
Working Time	30 Minutes
Charging Time	2H
Water Tank (Clean)	80mL
Water Tank (Dirty)	55mL
Model Number	LFS146

## Product Disposal



- 1.** The presence of the crossed-out wheeled bin symbol indicates that the product is subject to the European Directive 96/2002/EC.
- 2.** All electrical and electronic products should be disposed of separately from regular household waste through designated collection facilities set up by the government or local authorities.
- 3.** Proper disposal of your old appliance helps prevent potential environmental damage and protects human health.
- 4.** For more detailed information on how to dispose of your appliance, please contact your local city office, waste disposal service, or the store where you purchased the product.

## Battery Disposal Safety Notes

Batteries should not be disposed of with regular household waste. By law, users are required to return used batteries. To ensure proper disposal, designated collection containers are available at specialized retail shops as well as municipal collection points. This contributes significantly to the protection of the environment.

Since 1998, the Battery Decree mandates that all citizens dispose of used batteries exclusively through these specialized shops or collection facilities. These shops and manufacturers are required by law to accept used batteries for recycling or disposal as hazardous waste, in compliance with the decree. If you wish to return your used batteries to us, you can mail them to our address in an appropriately stamped envelope.

Batteries that are subject to mandatory labeling will bear one of the following symbols: a crossed-out wheeled bin and the chemical symbol for the pollutants they contain. The chemical symbols (Cd, Hg, or Pb) will be displayed beneath the illustration:

**Pb:** Battery contains lead

**Cd:** Battery contains cadmium

**Hg:** Battery contains mercury

## **Warranty**

Products that you buy directly from our **Porodo** website or shop come with a 24-month warranty.

When you buy **Porodo** products from any of our approved sellers, you only get a 12-month warranty. If you want to extend this warranty, go to our website at **porodo.net/warranty** and fill out the form with your information. Don't forget to upload a picture of the product too. After we've checked and accepted your request, we'll send you an email to confirm that your product's warranty has been extended.

For more info, please check:

**porodo.net/warranty**

## **Contact Us**

If you have any questions about this Privacy Policy, please contact us at:

**info@porodo.net**

Website: **porodo.net**

Service Support: **support@porodo.net**

Instagram: **porodo**