

LèPRESSO



LePresso

CRYSTAL BREW Drip Coffee and Tea Maker

SKU: LPCFM1236SI

Table of Contents

| | |
|------------------------------------|----------|
| Product Overview | 2 |
| Specifications | 2 |
| Operating Instructions | 2 |
| 1. Power Switch | 2 |
| 2. Function Selection | 3 |
| 3. Concentration Adjustment | 3 |
| 4. Cup Number Selection | 3 |
| 5. Temperature Adjustment | 4 |
| 6. Memory Function | 4 |
| General Usage Notes | 4 |
| Safety Guide | 5 |
| Schematic View | 6 |
| Cleaning Instructions | 7 |
| Disposal | 7 |
| Warranty | 8 |
| Contact Us | 8 |

Product Overview

This advanced coffee maker offers a versatile range of functions to satisfy your diverse beverage preferences. It can brew not only hot coffee but also cold brew coffee, as well as a variety of teas including floral, green, oolong, and black tea. Featuring a user-friendly interface and multiple adjustable settings, it enables you to customize the taste and temperature of your drinks according to your personal preferences.

Specifications

| | |
|-----------------|------------------------|
| Rated Voltage | 220V-240V |
| Rated Frequency | 60/50Hz |
| Rated Power | 1400W |
| Capacity | 1.2L |
| Material | SUS304 Stainless Steel |
| Cup Options | 8 / 6 / 4 / 2 Cups |
| Product Size | 292x142x312 mm |
| Product Weight | 2.6 kg |

Charging and Indicator Light

1. Power Switch

Find the power switch on the coffee maker. Press the switch to turn on the machine. Once turned on, the machine will be ready for use. After you finish using it, press the switch again to turn it off.

2. Function Selection

The control panel includes a function selection button or dedicated area that allows you to choose the type of beverage you want to prepare. The available options are:

2.1 Hot Coffee: Brews a hot, rich cup of coffee, ideal for starting your day.

2.2 Cold Brew Coffee: Provides a smooth, less acidic cold coffee experience. This process takes longer as the coffee steeps in cold water for an extended period.

2.3 Floral Tea: Infuses the water with the delicate fragrance of flowers, delivering a light and refreshing taste.

2.4 Green Tea: Rich in antioxidants, this option produces a refreshing, slightly grassy-flavored tea.

2.5 Oolong Tea: Offers a unique semi-oxidized flavor, balancing the freshness of green tea with the richness of black tea.

2.6 Black Tea: Produces a strong, bold-flavored tea with a rich aroma. Press the function selection button repeatedly until the desired beverage option appears on the display.

3. Concentration Adjustment

Some coffee makers feature a concentration adjustment function. If your model includes this feature, you can use the corresponding buttons or settings to increase or decrease the strength of your beverage. For coffee, a higher concentration results in a stronger and more intense flavor, while a lower concentration produces a milder taste. For tea, this adjustment helps control the bitterness and aroma to suit your preference.

4. Cup Number Selection

Use the cup number selection button to choose the number of cups you wish to brew. Available options typically include 6 ,4 ,2, or 8 cups. The machine will then adjust the water volume and brewing time to ensure the optimal strength for the selected number of cups.

5. Temperature Adjustment

5.1 The machine is equipped with + and – buttons for temperature control. Press the + button to increase the temperature and the – button to decrease it.

5.2 You can set the temperature according to your taste preferences. For hot beverages such as coffee and black tea, a temperature range of 90–80°C is generally ideal for a rich flavor. For floral and green teas, a lower temperature around 80–70°C is recommended to better preserve their delicate flavors.

6. Memory Function

6.1 The coffee maker features a memory function that allows it to save your preferred settings. After configuring the function, concentration, cup number, and temperature for a specific brew, the machine will store these settings.

6.2 The next time you wish to prepare the same type of beverage with the same preferences, simply turn on the machine, select the corresponding function (if applicable), and the machine will automatically recall the saved settings. You can then start the brewing process with a single press of the start button.

General Usage Notes

1. For optimal coffee brewing, use approximately 10 grams of coffee powder per cup. Ensure the water level in the tank corresponds appropriately to the selected cup number to prevent overflow or insufficient brewing.

2. The SUS304 filter is removable and washable. Regularly clean the filter to avoid accumulation of coffee grounds or tea residues, which can affect the beverage's flavor. Remove the filter, rinse thoroughly with clean water, and dry it completely before reinstalling it in the coffee maker.

3. After each use, clean the outer surface of the coffee maker with a damp cloth. Periodically descale the machine according to the water quality in your area. Refer to the manufacturer's descaling instructions for further details.

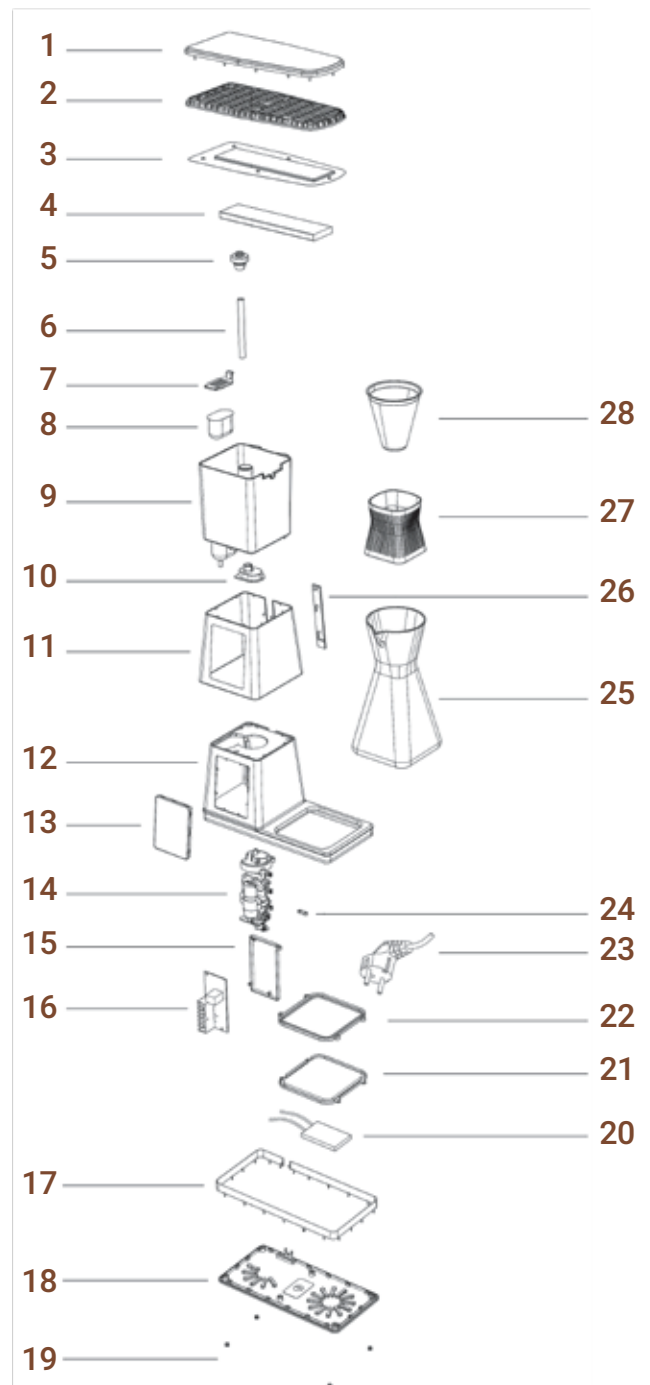
Safety Guide

- 1.** Before plugging in the appliance, ensure the voltage and power specifications match those indicated on the rating plate.
- 2.** Do not operate the appliance with wet hands, on damp floors, or if the appliance itself is wet.
- 3.** Never attempt to open or repair the appliance yourself, as this may result in electric shock.
- 4.** Keep the power cable away from sharp edges, hot surfaces, and open flames. Always remove the plug by holding the plug itself, not the cable.
- 5.** Ensure the power cable or extension cord is positioned to prevent accidental pulling or tripping hazards.
- 6.** If using an extension cord, ensure it is rated to handle the appliance's power consumption to avoid overheating.
- 7.** Place the appliance on a firm, level, and heat-resistant surface, away from open flames (e.g., gas ovens), and out of reach of children.
- 8.** This appliance is intended for household use only and is not suitable for commercial or outdoor use.
- 9.** Never leave the appliance unattended while it is operating.
- 10.** Children may not recognize the risks associated with improper use of electrical appliances. Always supervise children when they use household appliances.
- 11.** Always unplug the appliance when not in use and before cleaning.
- 12.** If you need to add coffee powder or tea during operation, switch off the appliance first, then switch it back on after adding.

- 13.** If the water tank is empty, immediately switch off the appliance.
- 14.** Use only clean, potable water in the appliance.
- 15.** Do not touch the hot plate during operation or immediately after switching off, as it may cause burns.
- 16.** After extended use, thoroughly clean the filter cone, cup, and water tank with warm water and detergent.
- 17.** Do not operate the coffee maker if the water tank is empty.

Schematic View

- 1.** Water tank cover decorative piece
- 2.** Water tank cover
- 3.** Decorative piece inside the water tank cover
- 4.** Water outlet nozzle
- 5.** Silicone sealing ring on the catheter
- 6.** Glass tube
- 7.** Water tank filter core cover
- 8.** Filter element
- 9.** Water tank
- 10.** Silicone sealing ring under the catheter
- 11.** Main decorative piece
- 12.** Main body
- 13.** Control panel assembly
- 14.** Heating element assembly
- 15.** Circuit board bracket
- 16.** Circuit board assembly
- 17.** Main decorative strip
- 18.** Main body bottom cover
- 19.** Foot grains
- 20.** PTC component
- 21.** Insulation board
- 22.** Insulation board sealing ring
- 23.** Power cord plug
- 24.** Line crossing code
- 25.** Glass cup
- 26.** Main body baffle
- 27.** Anti-slip silicone sheath
- 28.** Filter screen



Cleaning Instructions

- 1.** Always unplug the appliance from the mains outlet before cleaning.
- 2.** Never immerse the appliance in water. Clean the exterior with a damp cloth only.
- 3.** Removable parts such as the filter, filter holder, and drip tray can be washed under hot running water or in a dishwasher.
- 4.** Regularly descale your appliance based on your water hardness:
 - 4.1** For water hardness up to 18 DH (22.5 Clarke), descale 2 to 3 times per year.
 - 4.2** For water hardness above 18 DH (22.5 Clarke), descale 4 to 5 times per year.
- 5.** Use a soft damp cloth to clean the outside of the appliance. Avoid abrasive or scouring materials.
- 6.** Descale the appliance periodically using a descaling solution available from specialist retailers, following the product instructions carefully.
- 7.** After descaling, run the appliance with clean water at least twice to thoroughly rinse out any remaining descaling solution.

Disposal

This product must not be disposed of as unsorted household waste. It is important to separate such waste for proper treatment and recycling, in compliance with local waste management regulations.



Warranty

Products that you buy directly from our **LePresso** website or shop come with a 24-month warranty.

The 24-month warranty applies to products purchased directly from our **LePresso** website or store. If **LePresso** products are bought from any of our verified retailers, then the product is eligible for only a 12-month warranty. To extend your product's warranty, visit our website [**https://www.lepresso.com/warranty**](https://www.lepresso.com/warranty) and fill in your details in the provided form along with an uploaded picture of the product to process your request. Once approved, you will receive a confirmation email of the extended product warranty. Upload the required information within 48 hours of purchase to be eligible for a 24-month warranty period.

For more info, please check:

[**https://www.lepresso.com/warranty**](https://www.lepresso.com/warranty)

Contact Us

If you have any questions or concerns about our Shipping and Returns Policy, please contact us at: [**info@lepresso.com**](mailto:info@lepresso.com)

Website: [**https://www.lepresso.com/**](https://www.lepresso.com/)

Instagram: [**lepresso_official**](#)